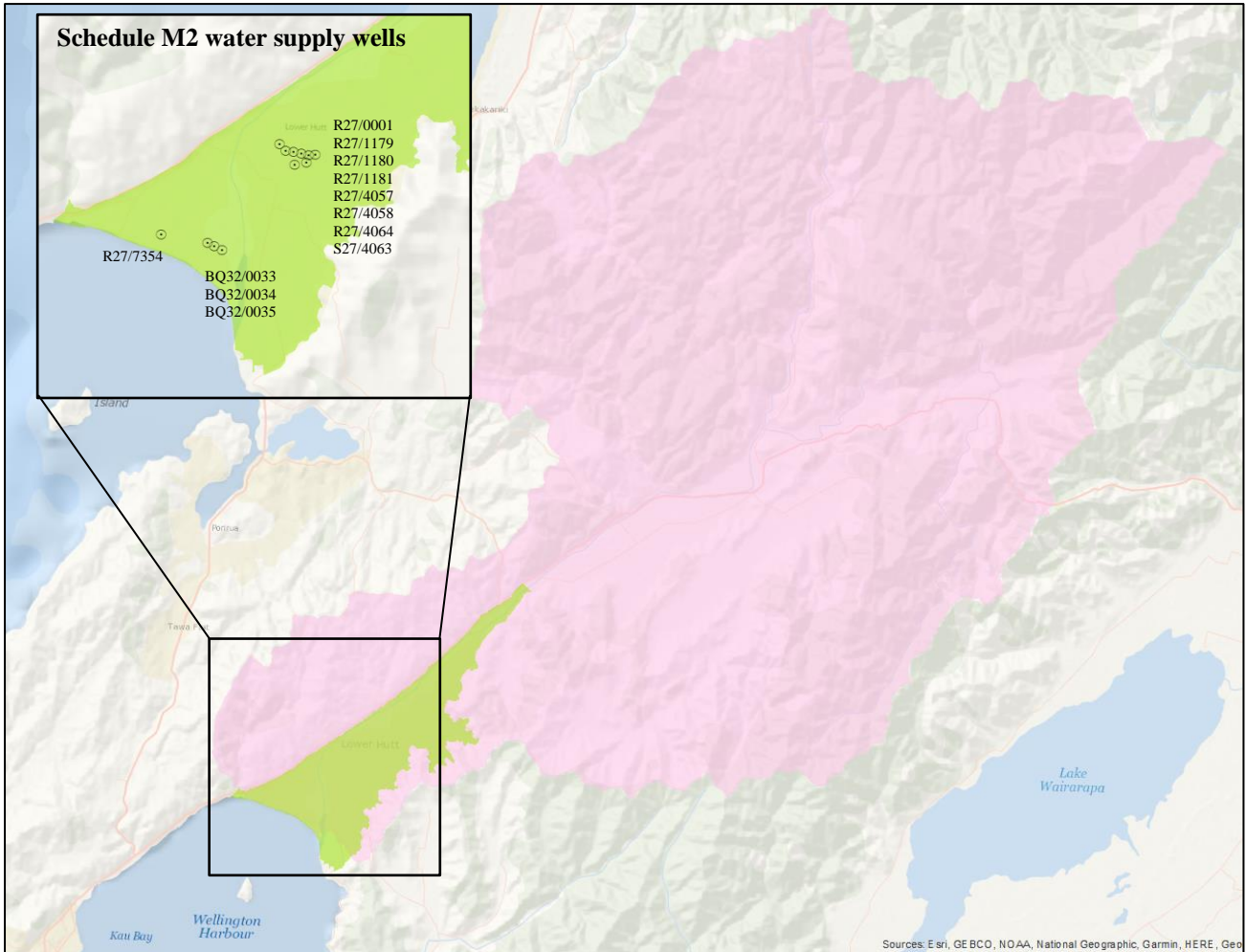


# Groundwater community drinking water supply protection area – Hutt Valley (incorporates Schedule M2) and Hutt community drinking water supply catchment area

Map 27b



This version of the map is not complete. The version of this map available online through the online web map viewer shows the complete, detailed information on a GIS overlay that is not shown on this hard copy. The online version is available on the Council's website at <http://mapping.gw.govt.nz/gwrc/> (select theme **Proposed** Natural Resources Plan **2016**) and can be accessed from the Council offices or public library.

*Note 1: The groundwater protection area (shown in green) is a modification of the version in Map 27b of the PNRP; this modified version covers the whole of the Lower Hutt valley floor as proposed in the Joint Witness Statement of 18 June 2018.*

*Note 2: The water supply wells shown in the inset view of the groundwater protection area are amended from the PNRP as described in Schedule M2 of the red-line version.*

- Groundwater community drinking water supply protection area
- Hutt community drinking water supply catchment area
- Schedule M2 Groundwater Supply Well

**TRUE SCALE NOT KNOWN**



**Draft for RoR Report purposes only**