

## 10 Kāpiti Coast Whaitua

**Minimum flows, minimum water levels** and **core allocation** referred to in the Plan are interim to the extent that they will be reviewed by **whaitua** committees and may be amended by plan changes or variations following recommendations of **whaitua** committees.

### 10.1 Policies

In addition to policies on **minimum flows, minimum water levels** and **core allocation** that follow, policies in chapter 4 of the Plan also apply equally to **minimum flows, minimum levels** and **core allocation** in the Kāpiti Coast Whaitua.

#### Policy K.P1: Minimum flows and water levels in the Kāpiti Coast Whaitua

**Minimum flows** and **minimum water levels** for rivers and lakes in the Kāpiti Coast Whaitua are:

- (a) for rivers (including **tributaries**) in Table 10.1, the **minimum flows** in Table 10.1, and
- (b) for rivers not in Table 10.1, 90% of the ~~seven-day~~<sup>1</sup> **mean annual low flow**, and
- (c) for **natural lakes**, existing **minimum water levels**.

#### Policy K.P2: Core allocation for rivers and groundwater in the Kāpiti Coast Whaitua

The maximum amount of water available for allocation from rivers and groundwater in Tables 10.2 and 10.3, at the time an application is made for resource consent to take and use water, shall not exceed whichever is the greater of:

- (a) the total amount allocated by resource consents, or
- (b) the allocation amounts identified in Tables 10.2 and 10.3

except for the take and use of water identified in Policy P117 at flows above the **median flow**.

<sup>1</sup> Section 42A report: Water allocation Issue 2.3

## 10.2 Rules

~~In addition to rules for the take and use of water that follow, rules in Chapter 5 of the Plan also apply equally to rules for the Kāpiti Coast Whaitua. If an activity is covered by more than one rule, then the rule that applies is the rule that is more specific for the relevant activity, area or resource. This does not apply where a proposal includes a number of activities which trigger separate specific rules. In that case, all rules are considered when assessing the proposal. An activity needs to comply with all relevant rules in the Plan, including those in Chapter 5.<sup>2</sup>~~

### Rule K.R1: Take and use of water in the Kāpiti Coast Whaitua – restricted discretionary activity

The take and use of water from any river (including **tributaries**) or groundwater in the Kāpiti Coast Whaitua in Tables 10.2 and 10.3 that is not provided for in Rules R136, R137, R138, R139, R140 R140A or R141<sup>3</sup> is a restricted discretionary activity provided the following conditions are met:

- (a) the take and use shall not occur below the **minimum flows** in Table 10.1, except that this condition does not apply to:
  - (i) water for the **health needs of people** as part of a **group drinking water supply** or **community drinking water supply** or water for rootstock protection, and
  - (ii) taking groundwater, and
- (b) in any **catchment management unit** in Tables 10.2 and 10.3, the amount of water taken and used, in addition to all **existing resource consents**, does not exceed whichever is the greater of:
  - (i) the maximum allocated by resource consents at the date the consent application is lodged, or
  - (ii) the allocation amounts in Tables 10.2 and 10.3except that this condition does not apply to the take and use of water at river flows above the **median flow**, and
- (c) at flows above **median flow**:
  - (i) the frequency of **flushing flows** that exceed three times the **median flow** of the river is not changed, and
  - (ii) no more than 50% of the river flow above the **median flow** remains in the river is taken for rivers with mean flows greater than 5m<sup>3</sup>/sec, or
  - (iii) no more than 10% of the total river flow is taken for rivers with mean flows of less than or equal to 5m<sup>3</sup>/sec, and<sup>4</sup>

<sup>2</sup> s42A report: Overall policy framework of the proposed Plan, Issue 1.3

<sup>3</sup> Section 42A report : Water allocation Issue 2.6

<sup>4</sup> Section 42A report: Water allocation Issue 2.5

- (d) the take and use is not in part of a river identified as an outstanding river in Schedule A1 (outstanding rivers).

*Matters for discretion*

1. The reasonable and efficient use of water, including the criteria in Schedule Q (efficient use)
2. The timing, amount, and rate of taking and using water including instantaneous (L/s), daily (m<sup>3</sup>/day) and seasonal requirements and duration and timing of peak daily take rate
3. For **group drinking water supplies** or **community drinking water supplies**, the amount and rate of water taken and used for the **health needs of people**
4. Reduction in the rate of take from surface water and **groundwater directly connected to surface water direct connection (Category A) groundwater and high connection (Category B) groundwater**<sup>5</sup> at times of low flow and restrictions when rivers approach or fall below the **minimum flows or water level**<sup>6</sup>, ~~including the guideline for stepdown allocations and flows in Schedule R (stepdown guideline)~~
5. Effects due to local flow or water level depletion on wetlands, springs or the downstream river reach in the same **catchment management unit**
6. Interference effects on existing lawful water takes
7. Prevention of salt water intrusion into the **aquifer**, or landward movement of the salt water/fresh water interface
8. For a take and use ~~from groundwater, the degree of connectivity and category according to Table 4.1 in category B groundwater (directly connected) or category B groundwater (not directly connected)~~<sup>7</sup>
9. Preventing fish from entering water intakes
10. Measuring and reporting, including the guideline in Schedule S (measuring takes)

**Rule K.R2: Take and using water – discretionary activity**

The take and use of water that is not provided for in Rules R136, R137, R138, R139, R140, R140A or R141<sup>8</sup> in the Kāpiti Coast Whaitua from:

- (a) any river, lake or groundwater not in Tables 10.2 and 10.3, or
- (b) any river at flows above the **median flow** that does not meet condition (c) of Rule K.R1, or

<sup>5</sup> Section 42A report: Water allocation Issue 2.2

<sup>6</sup> Section 42A report : Water allocation Issue 2.3

<sup>7</sup> Section 42A report: Water allocation Issue 2.2

<sup>8</sup> Section 42A report: Water allocation Issue 2.6

(c) any river which does not meet condition (d) of Rule K.R1

is a discretionary activity.

**Rule K.R3: Take and use of water from outstanding rivers – non-complying activity**

The take and use of water from a river or part of a river in the Kāpiti Coast Whaitua identified as outstanding in Schedule A1 (outstanding rivers) is a non-complying activity.

**Rule K.R4: Take and use of water exceeding minimum flows or core allocation – prohibited activity**

The take and use of water from a river (including **tributaries**) or groundwater in Tables 10.2 and 10.3 that does not meet conditions (a) or (b) of Rule K.R1 is a prohibited activity.

**Table 10.1: Minimum flows for rivers in the Kāpiti Coast Whaitua**

River	Management point	Minimum flow (L/s)
Waitohu Stream upstream of the coastal marine area boundary	KCDC Water Supply Intake recorder	140
Ōtaki River upstream of the coastal marine area boundary	Pukehinau recorder	2,550
Mangaone Stream upstream of the coastal marine area boundary	Ratanui recorder	22
Waikanae River upstream of the coastal marine area boundary	WTP recorder	750

**Table 10.2: Surface water allocation amounts for rivers and direct connection (category A) groundwater and high connection (category B) groundwater directly-connected to surface water<sup>9</sup> in the Kāpiti Coast Whaitua**

Catchment management units (shown in Figures 10.1 and 10.2)	Allocation amount <sup>10</sup> (L/s)
Waitohu Stream and <b>tributaries, <u>direct connection ( Waitohu category A) groundwater and high connection (Ōtaki category B) groundwater (directly connected)</u></b>	45
Ōtaki River and <b>tributaries, <u>direct connection (Ōtaki category A) groundwater and high connection (Ōtaki or Te Horo category B) groundwater (directly connected)</u></b>	1,970,590 <sup>11</sup>
Mangaone Stream and <b>tributaries, <del>category A groundwater and high connection (Te Horo category B) groundwater (directly connected)</del></b>	45,24 <sup>12</sup>

<sup>9</sup> Section 42A report: Water allocation Issue 2.2

<sup>10</sup> This limit has been derived as a default based upon one of two rules; for rivers with a mean flow of greater than 5,000 litres/sec, the **allocation limit** is equal to 50% of the **natural seven-day mean annual low flow** (7d MALF) and for rivers with a mean flow of less than 5,000 litres/sec, the **allocation limit** is equal to 30% of the 7d MALF.

<sup>11</sup> Section 42A report Water allocation Issue 2.3

<sup>12</sup> Section 42A report Water allocation Issue 2.3

Catchment management units (shown in Figures 10.1 and 10.2)	Allocation amount <sup>10</sup> (L/s)
Waikanae River and tributaries, <b>direct connection (Waikanae category A) groundwater</b> and <b>high connection (Waikanae category B) groundwater</b> ( <del>directly connected</del> )	220

Note: Where **high connection (category B) groundwater** is referred to in the tables, the calculated stream depletion effect (described in Table 4.1) is included in the surface water allocation for the relevant sub catchment management unit, while the remainder is included in the groundwater allocation the relevant sub catchment management unit.

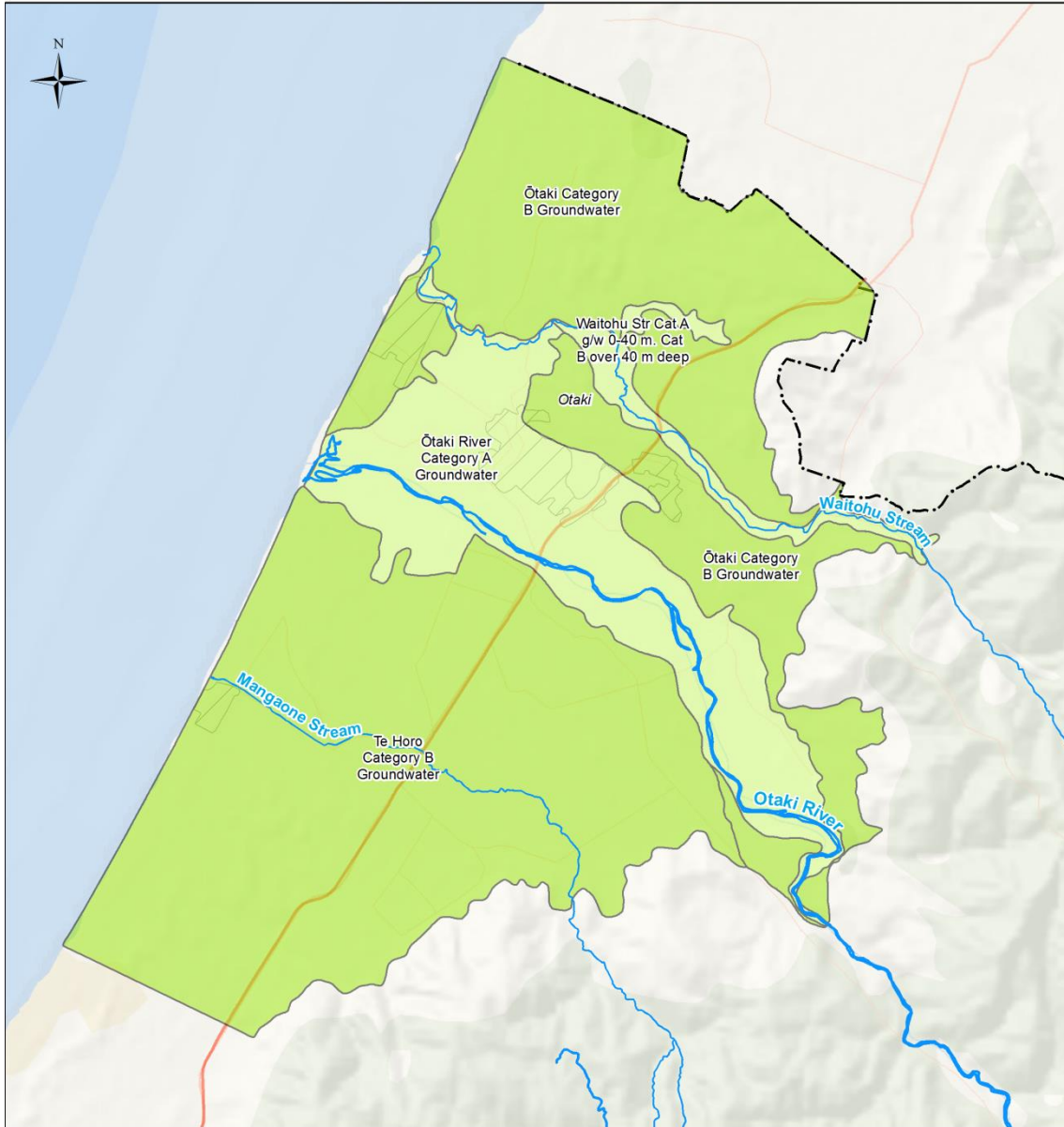
**Table 10.3: Groundwater allocation amounts for moderate connection (Category B) groundwater not directly connected to surface water<sup>13</sup> in the Kāpiti Coast Whaitua**

Catchment management units (shown in Figures 10.1 and 10.2)	Allocation amount (m <sup>3</sup> /year)
Raumati <b>moderate connection (category B) groundwater</b> ( <del>not directly connected</del> )	<del>1,229,000</del> 840,000 <sup>14</sup>
Waikanae <b>moderate connection (category B) groundwater</b> ( <del>not directly connected</del> )	2,710,000
Te Horo <b>moderate connection (category B) groundwater</b> ( <del>not directly connected</del> )	1,620,000
Waitohu <b>moderate connection (category B) groundwater</b> ( <del>not directly connected</del> )	1,080,000

<sup>13</sup> Section 42A report: Water allocation Issue 2.2

<sup>14</sup> Section 42A report: Water allocation Issue 2.4

**Figure 10.1: North Kāpiti rivers and groundwater in Tables 10.2 and 10.3**



This version of the map is not complete. The version of this map available online through the online web map viewer shows the complete, detailed information on a GIS overlay that is not shown on this hard copy. The online version is available on the Council's website at <http://mapping.gw.govt.nz/gwrc/> (select theme Proposed Natural Resources Plan 2015) and can be accessed from the Council offices or public library.

- State Highway    — River    ■ Category B groundwater
- ▨ Urban Areas    ■ Category A groundwater

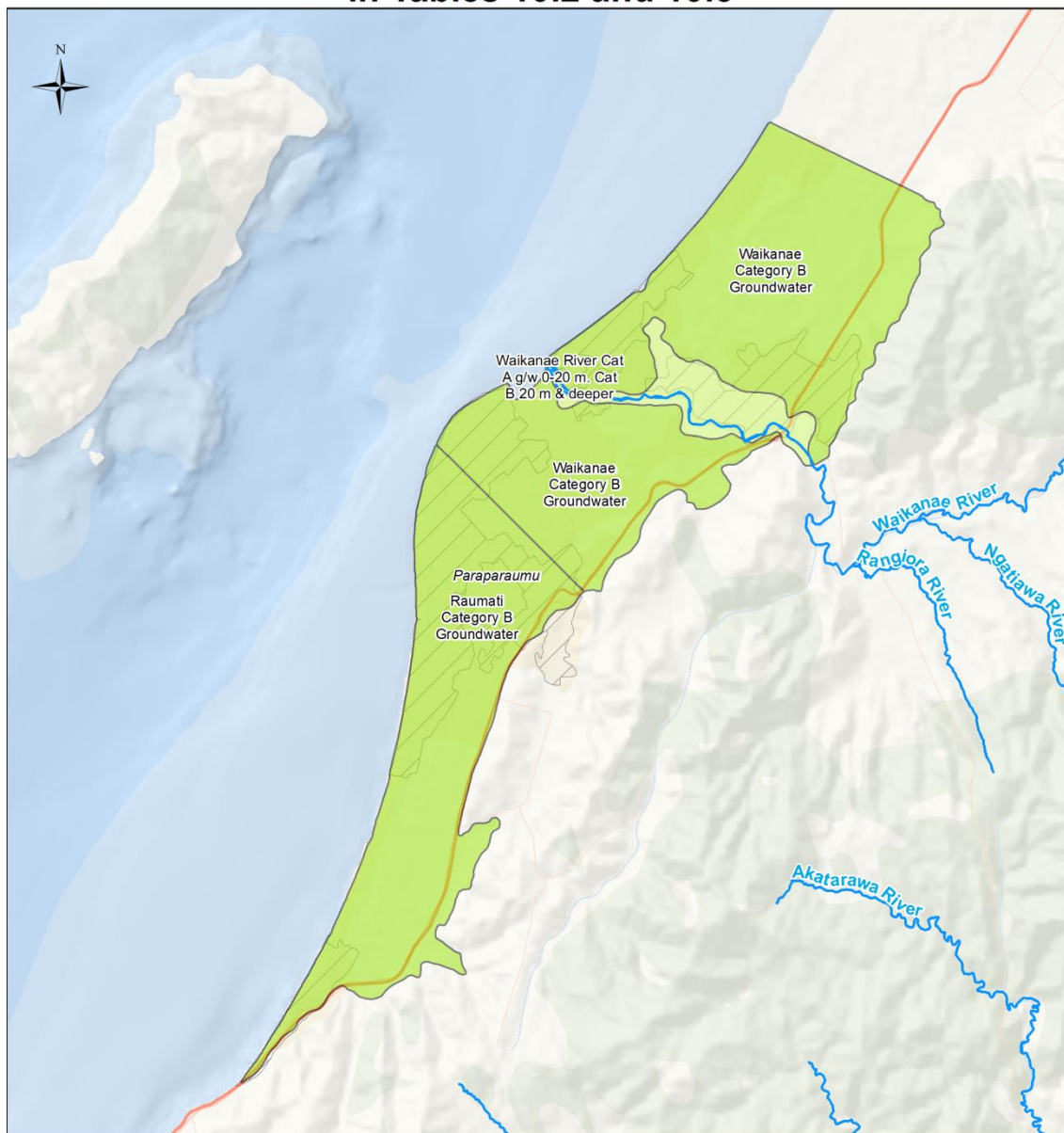


Basemap: World Oceans Base  
Projection: NZTM 2000



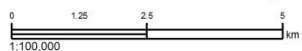
Copyright  
Basemap: Esri, DeLorme, GEBCO, NOAA NGDC,  
and other contributors  
Topographic and Cadastral: LINZ & CoreLogic Ltd

**Figure 10.2: South Kāpiti rivers and groundwater in Tables 10.2 and 10.3**



This version of the map is not complete. The version of this map available online through the online web map viewer shows the complete, detailed information on a GIS overlay that is not shown on this hard copy. The online version is available on the Council's website at <http://mapping.gw.govt.nz/gwrc/> (select theme Proposed Natural Resources Plan 2015) and can be accessed from the Council offices or public library.

- State Highway
- River
- Urban Areas
- Category A groundwater
- Category B groundwater



Basemap: World Oceans Base  
Projection: NZTM 2000



Copyright  
Basemap: Esri, DeLorme, GEBCO, NOAA NGDC,  
and other contributors  
Topographic and Cadastral: LINZ & CoreLogic Ltd