

10 Kāpiti Coast Whaitua

Minimum flows, minimum water levels and **core allocation** referred to in the Plan are interim to the extent that they will be reviewed by **whaitua** committees and may be amended by plan changes or variations following recommendations of **whaitua** committees.

10.1 Policies

In addition to policies on **minimum flows, minimum water levels** and **core allocation** that follow, policies in chapter 4 of the Plan also apply equally to **minimum flows, minimum levels** and **core allocation** in the Kāpiti Coast Whaitua.

Policy K.P1: Minimum flows and water levels in the Kāpiti Coast Whaitua

Minimum flows and **minimum water levels** for rivers and lakes in the Kāpiti Coast Whaitua are:

- (a) for rivers (including **tributaries**) in Table 10.1, the **minimum flows** in Table 10.1, and
- (b) for rivers not in Table 10.1, 90% of the seven-day **mean annual low flow**, and
- (c) for **natural lakes**, existing **minimum water levels**.

Policy K.P2: Core allocation for rivers and groundwater in the Kāpiti Coast Whaitua

The maximum amount of water available for allocation from rivers and groundwater in Tables 10.2 and 10.3, at the time an application is made for resource consent to take and use water, shall not exceed whichever is the greater of:

- (a) the total amount allocated by resource consents, or
- (b) the allocation amounts identified in Tables 10.2 and 10.3

except for the take and use of water identified in Policy P117 at flows above the **median flow**.

10.2 Rules

In addition to rules for the take and use of water that follow, rules in Chapter 5 of the Plan also apply equally to rules for the Kāpiti Coast Whaitua. If an activity is covered by more than one rule, then the rule that applies is the rule that is more specific for the relevant activity, area or resource. This does not apply where a proposal includes a number of activities which trigger separate specific rules. In that case, all rules are considered when assessing the proposal. An activity needs to comply with all relevant rules in the Plan, including those in Chapter 5.¹

Rule K.R1: Take and use of water in the Kāpiti Coast Whaitua – restricted discretionary activity

The take and use of water from any river (including **tributaries**) or groundwater in the Kāpiti Coast Whaitua in Tables 10.2 and 10.3 is a restricted discretionary activity provided the following conditions are met:

- (a) the take and use shall not occur below the **minimum flows** in Table 10.1, except that this condition does not apply to:
 - (i) water for the **health needs of people** as part of a **group drinking water supply** or **community drinking water supply** or water for rootstock protection, and
 - (ii) taking groundwater, and
- (b) in any **catchment management unit** in Tables 10.2 and 10.3, the amount of water taken and used, in addition to all **existing resource consents**, does not exceed whichever is the greater of:
 - (i) the maximum allocated by resource consents at the date the consent application is lodged, or
 - (ii) the allocation amounts in Tables 10.2 and 10.3except that this condition does not apply to the take and use of water at river flows above the **median flow**, and
- (c) at flows above **median flow**:
 - (i) the frequency of **flushing flows** that exceed three times the **median flow** of the river is not changed, and
 - (ii) 50% of the river flow above the **median flow** remains in the river, and
- (d) the take and use is not in part of a river identified as an outstanding river in Schedule A1 (outstanding rivers).

Matters for discretion

1. The reasonable and efficient use of water, including the criteria in Schedule Q (efficient use)

¹ s42A report: Overall policy framework of the proposed Plan, Issue 1.3

2. The timing, amount, and rate of taking and using water including instantaneous (L/s), daily (m³/day) and seasonal requirements and duration and timing of peak daily take rate
3. For **group drinking water supplies** or **community drinking water supplies**, the amount and rate of water taken and used for the **health needs of people**
4. Reduction in the rate of take from surface water and **groundwater directly connected to surface water** at times of low flow and restrictions when rivers approach or fall below the **minimum flow**, including the guideline for **stepdown allocations** and flows in Schedule R (stepdown guideline)
5. Effects due to local flow or water level depletion on wetlands, springs or the downstream river reach in the same **catchment management unit**
6. Interference effects on existing lawful water takes
7. Prevention of salt water intrusion into the **aquifer**, or landward movement of the salt water/fresh water interface
8. For a take and use in **category B groundwater (directly connected)** or **category B groundwater (not directly connected)**
9. Preventing fish from entering water intakes
10. Measuring and reporting, including the guideline in Schedule S (measuring takes)

Rule K.R2: Take and using water – discretionary activity

The take and use of water in the Kāpiti Coast Whaitua from:

- (a) any river, lake or groundwater not in Tables 10.2 and 10.3, or
- (b) any river at flows above the **median flow** that does not meet condition (c) of Rule K.R1, or
- (c) any river which does not meet condition (d) of Rule K.R1

is a discretionary activity.

Rule K.R3: Take and use of water from outstanding rivers – non-complying activity

The take and use of water from a river or part of a river in the Kāpiti Coast Whaitua identified as outstanding in Schedule A1 (outstanding rivers) is a non-complying activity.

Rule K.R4: Take and use of water exceeding minimum flows or core allocation – prohibited activity

The take and use of water from a river (including **tributaries**) or groundwater in Tables 10.2 and 10.3 that does not meet conditions (a) or (b) of Rule K.R1 is a prohibited activity.

Table 10.1: Minimum flows for rivers in the Kāpiti Coast Whaitua

River	Management point	Minimum flow (L/s)
Waitohu Stream upstream of the coastal marine area boundary	KCDC Water Supply Intake recorder	140
Ōtaki River upstream of the coastal marine area boundary	Pukehinau recorder	2,550
Mangaone Stream upstream of the coastal marine area boundary	Ratanui recorder	22
Waikanae River upstream of the coastal marine area boundary	WTP recorder	750

Table 10.2: Surface water allocation amounts for rivers and groundwater directly connected to surface water in the Kāpiti Coast Whaitua

Catchment management units (shown in Figures 10.1 and 10.2)	Allocation amount ² (L/s)
Waitohu Stream and tributaries, category A groundwater and category B groundwater (directly connected)	45
Ōtaki River and tributaries, category A groundwater and category B groundwater (directly connected)	1,970
Mangaone Stream and tributaries, category A groundwater and category B groundwater (directly connected)	45
Waikanae River and tributaries, category A groundwater and category B groundwater (directly connected)	220

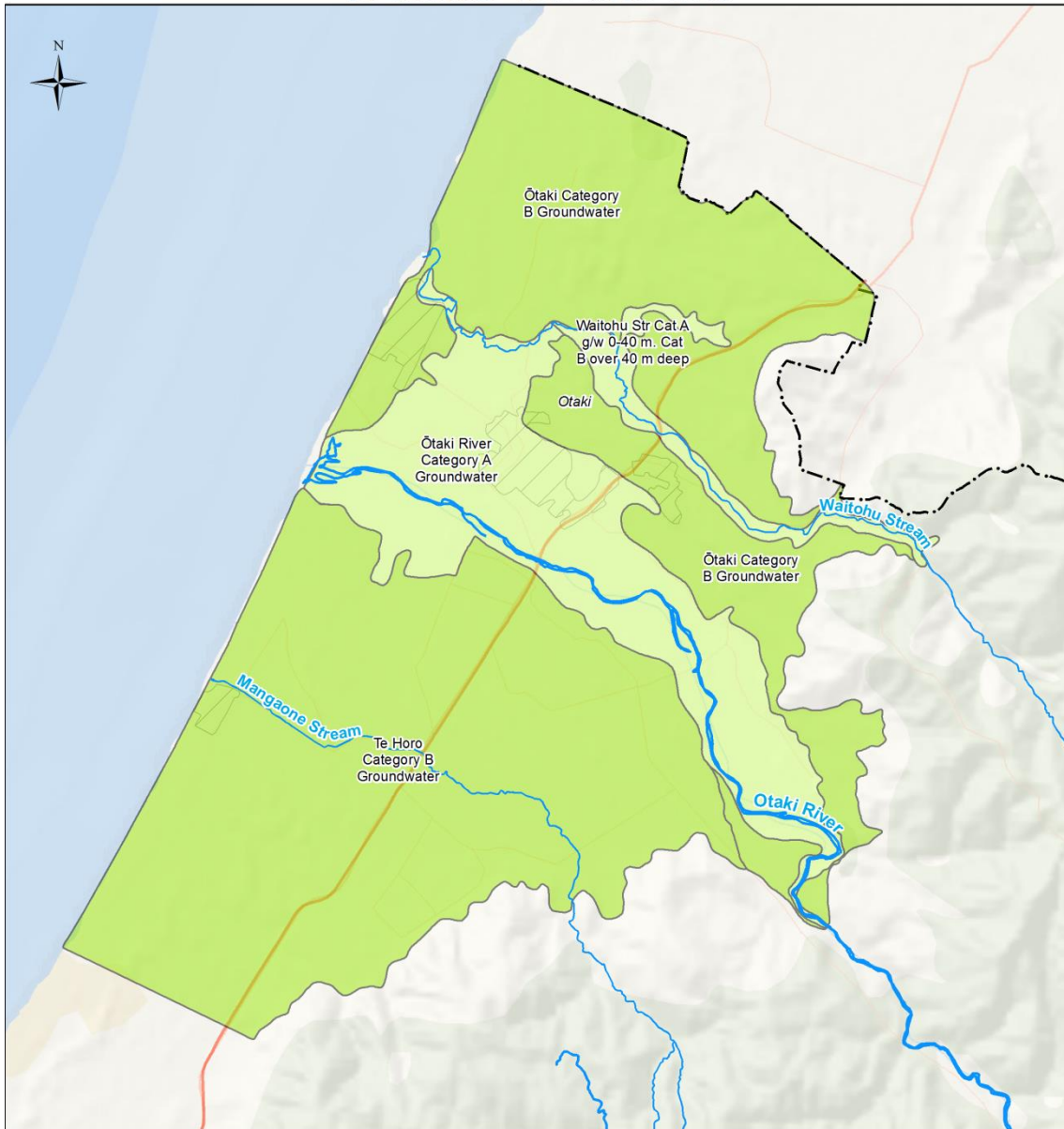
Table 10.3: Groundwater allocation amounts for groundwater not directly connected to surface water in the Kāpiti Coast Whaitua

Catchment management units (shown in Figures 10.1 and 10.2)	Allocation amount (m ³ /year)
Raumati category B groundwater (not directly connected)	810,000
Waikanae category B groundwater (not directly connected)	2,710,000
Te Horo category B groundwater (not directly connected)	1,620,000

² This **limit** has been derived as a default based upon one of two rules; for rivers with a mean flow of greater than 5,000 litres/sec, the **allocation limit** is equal to 50% of the natural seven-day **mean annual low flow** (7d MALF) and for rivers with a mean flow of less than 5,000 litres/sec, the **allocation limit** is equal to 30% of the 7d MALF.

Catchment management units (shown in Figures 10.1 and 10.2)	Allocation amount (m³/year)
Waitohu category B groundwater (not directly connected)	1,080,000

Figure 10.1: North Kāpiti rivers and groundwater in Tables 10.2 and 10.3



This version of the map is not complete. The version of this map available online through the online web map viewer shows the complete, detailed information on a GIS overlay that is not shown on this hard copy. The online version is available on the Council's website at <http://mapping.gw.govt.nz/gwrc/> (select theme Proposed Natural Resources Plan 2015) and can be accessed from the Council offices or public library.

- State Highway — River ■ Category B groundwater
- ▨ Urban Areas ■ Category A groundwater

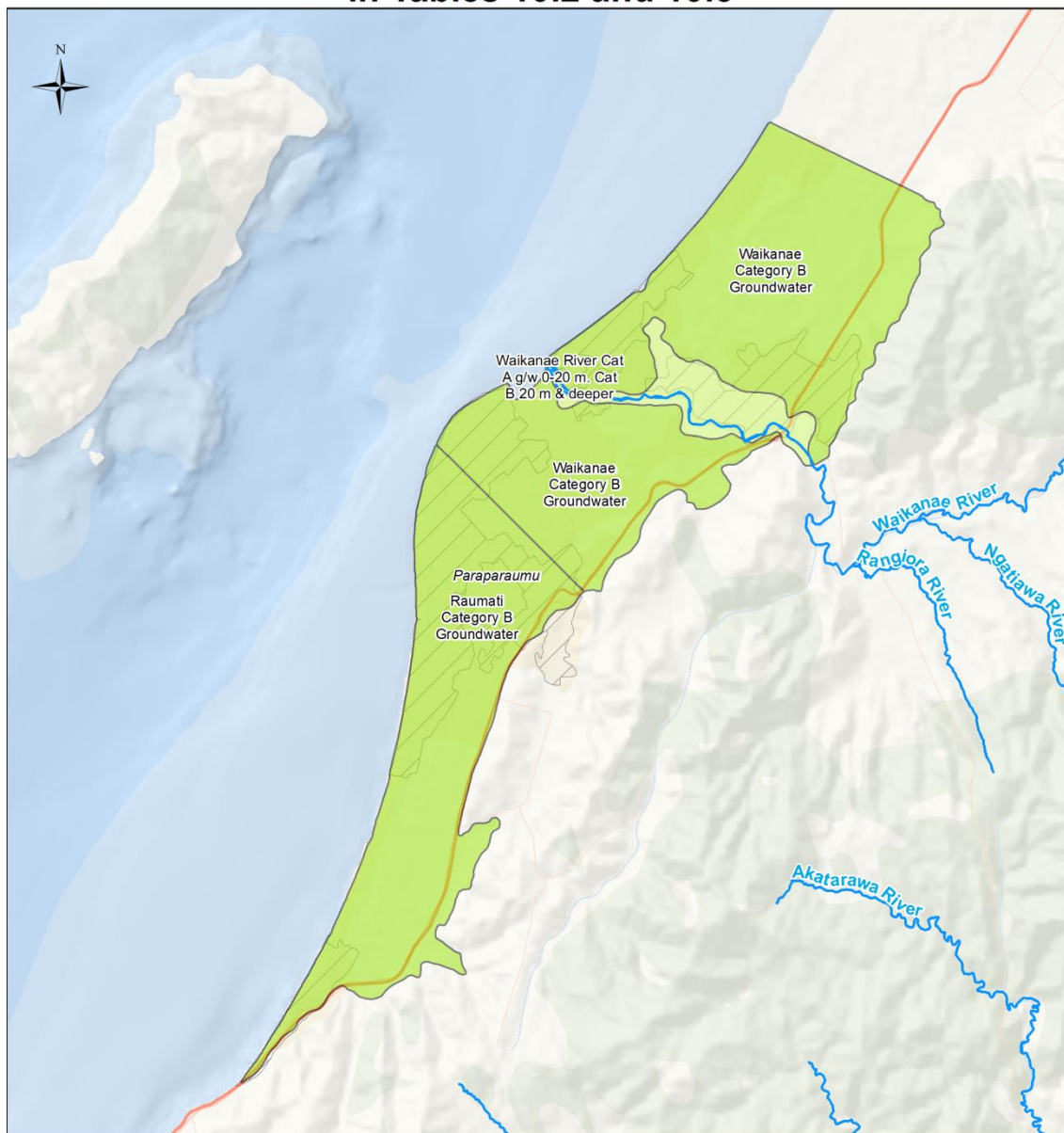


Basemap: World Oceans Base
Projection: NZTM 2000



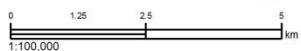
Copyright
Basemap: Esri, DeLorme, GEBCO, NOAA NGDC,
and other contributors
Topographic and Cadastral: LINZ & CoreLogic Ltd

Figure 10.2: South Kāpiti rivers and groundwater in Tables 10.2 and 10.3



This version of the map is not complete. The version of this map available online through the online web map viewer shows the complete, detailed information on a GIS overlay that is not shown on this hard copy. The online version is available on the Council's website at <http://mapping.gw.govt.nz/gwrc/> (select theme Proposed Natural Resources Plan 2015) and can be accessed from the Council offices or public library.

- State Highway
- River
- Category B groundwater
- Category A groundwater
- Urban Areas



Basemap: World Oceans Base
Projection: NZTM 2000



Copyright
Basemap: Esri, DeLorme, GEBCO, NOAA NGDC,
and other contributors
Topographic and Cadastral: LINZ & CoreLogic Ltd