

8 Wellington Harbour and Hutt Valley Whaitua

Minimum flows, minimum water levels and **core allocation** referred to in the Plan are interim to the extent that they will be reviewed by **whaitua** committees and may be amended by plan changes or variations following recommendations of **whaitua** committees.

8.1 Policies

In addition to policies on **minimum flows, minimum water levels** and **core allocation** that follow, policies in chapter 4 of the Plan also apply equally to **minimum flows** and **core allocation** in the Wellington Harbour and Hutt Valley Whaitua.

Policy WH.P1: Minimum flows and water levels in the Wellington Harbour and Hutt Valley Whaitua

Minimum flows and **minimum water levels** in the Wellington Harbour and Hutt Valley Whaitua are:

- (a) for rivers (including **tributaries**) the **minimum flows** in Table 8.1, and
- (b) for rivers not in Table 8.1, 90% of the seven-day **mean annual low flow**, and
- (c) for **natural lakes**, existing **minimum water levels**.

Policy WH.P2: Core allocation in the Wellington Harbour and Hutt Valley Whaitua

The maximum amount of water available for allocation from rivers (and **tributaries**) and groundwater in the Te Awa Kairangi/Hutt River, Wainuiomata River catchment and Orongorongo River catchments, at the time an application is made for resource consent to take and use water, shall not exceed whichever is the greater of:

- (a) the total amount allocated by resource consents, or
- (b) the allocation amounts identified in Tables 8.2-8.3

except for the taking and use of water identified in Policy P117 at flows above the **median flow**.

8.2 Rules

~~In addition to rules for the take and use of water that follow, rules in Chapter 5 of the Plan also apply equally to rules for the Wellington Harbour and Hutt Valley whitua. If an activity is covered by more than one rule, then the rule that applies is the rule that is more specific for the relevant activity, area or resource. This does not apply where a proposal includes a number of activities which trigger separate specific rules. In that case, all rules are considered when assessing the proposal. An activity needs to comply with all relevant rules in the Plan, including those in Chapter 5.¹~~

Rule WH.R1: Take and use of water in the Wellington Harbour and Hutt Valley Whitua – restricted discretionary activity

The take and use of water from any river (including **tributaries**) and groundwater in the Te Awa Kairangi/Hutt River, Wainuiomata River and Orongorongo River catchments, is a restricted discretionary activity provided the following conditions are met:

- (a) the take and use shall not occur below the **minimum flows** in Table 8.1, except that this condition does not apply to:
 - (i) water for the **health needs of people** as part of a **group drinking water supply** or a **community drinking water supply**, and
 - (ii) taking groundwater, and
- (b) in any **catchment management unit** in Tables 8.2 and 8.3, the amount of water taken and used, in addition to all **existing resource consents**, does not exceed whichever is the greater of:
 - (i) the maximum amount allocated by resource consents at the date the consent application is lodged, or
 - (ii) the allocation amounts in Tables 8.2 and 8.3except that this condition does not apply to the take and use of water at river flows above the **median flow**, and
- (c) at flows above **median flow**:
 - (i) the frequency of **flushing flows** that exceed three times the **median flow** of the river is not changed, and
 - (ii) 50% of the river flow above the **median flow** remains in the river, and
- (d) the take and use is not from a river identified as outstanding in Schedule A1 (outstanding rivers).

¹ s42A report: Overall policy framework of the proposed Plan – Part B, Issue 1.3

Matters for discretion

1. The reasonable and efficient use of water, including the criteria in Schedule Q (efficient use)
2. The timing, amount, and rate of take of water; including instantaneous (L/sec), daily (m³/day), and seasonal requirements and duration and timing of peak daily take rate
3. For **group drinking water supplies** or **community drinking water supplies**, the amount and rate of water taken and used for the **health needs of people**
4. Reduction in the rate of take from surface water and **groundwater directly connected to surface water** at times of low flow and restrictions when rivers approach or fall below the **minimum flows**
5. Effects due to local flow or water level depletion on wetlands, springs, or the downstream river reach in the same **catchment management unit**
6. Interference effects on existing lawful water takes
7. Prevention of salt water intrusion into the **aquifer**, or landward movement of the salt water/fresh water interface
8. For a take and use in **category B groundwater (directly connected)** or **category B groundwater (not directly connected)**
9. Preventing fish from entering water intakes
10. Measuring and reporting, including the guideline in Schedule S (measuring takes)

Rule WH.R2: Take and use of water in the Wellington Harbour and Hutt Valley Whaitua – discretionary activity

The take and use of water in the Wellington Harbour and Hutt Valley Whaitua from:

- (a) any river or groundwater not in Table 8.2 and Table 8.3, and
- (b) any lake other than an outstanding lake identified in Schedule A2 (outstanding lakes), and
- (c) any river at flows above the **median flow** that does not meet condition (c) of Rule WH.R1

is a discretionary activity.

Rule WH.R3: Take and use of water from outstanding rivers or lakes – non-complying activity

The take and use of water from a river or lake in the Wellington Harbour and Hutt Valley Whaitua identified as outstanding in Schedule A1 (outstanding rivers) or Schedule A2 (outstanding lakes) is a non-complying activity.

Rule WH.R4: Take and use of water exceeding minimum flows or core allocation – prohibited activity

The take and use of water from a river (including **tributaries**) or groundwater in the Wellington Harbour and Hutt Valley Whaitua in Tables 8.2 and 8.3 that does not meet conditions (a) or (b) of Rule WH.R1 is a prohibited activity.

Table 8.1: Minimum flows for rivers in the Wellington Harbour and Hutt Valley Whaitua

River		Management point	Minimum flow (L/s)
Te Awa Kairangi/Hutt River	Upstream of the confluence with the Pakuratahi River	Kaitoke water supply intake	600
	Downstream of the confluence with the Pakuratahi River	Birchville recorder	1,200
Wainuiomata River	Between Manuka Track and the confluence with Georges Creek	Manuka recorder	100
	Between Georges Creek and the boundary of the coastal marine area	Leonard Wood Park recorder	300
Orongorongo River upstream of the boundary with the coastal marine area		Russ Bridge recorder	100

Table 8.2: Surface water allocation amounts for rivers and groundwater directly connected to surface water in the Te Awa Kairangi/Hutt River, Wainuiomata River and Orongorongo River catchments

Catchment management unit for the Te Awa Kairangi/Hutt River catchment (shown in Figures 8.1 and 8.2)	Allocation amount ² (L/s)
Te Awa Kairangi/Hutt River and tributaries , category A groundwater and category B groundwater (directly connected) in the catchment management units shown in Figures 8.1 and 8.2	2,140
Wainuiomata River and tributaries	180
Orongorongo River and tributaries	95

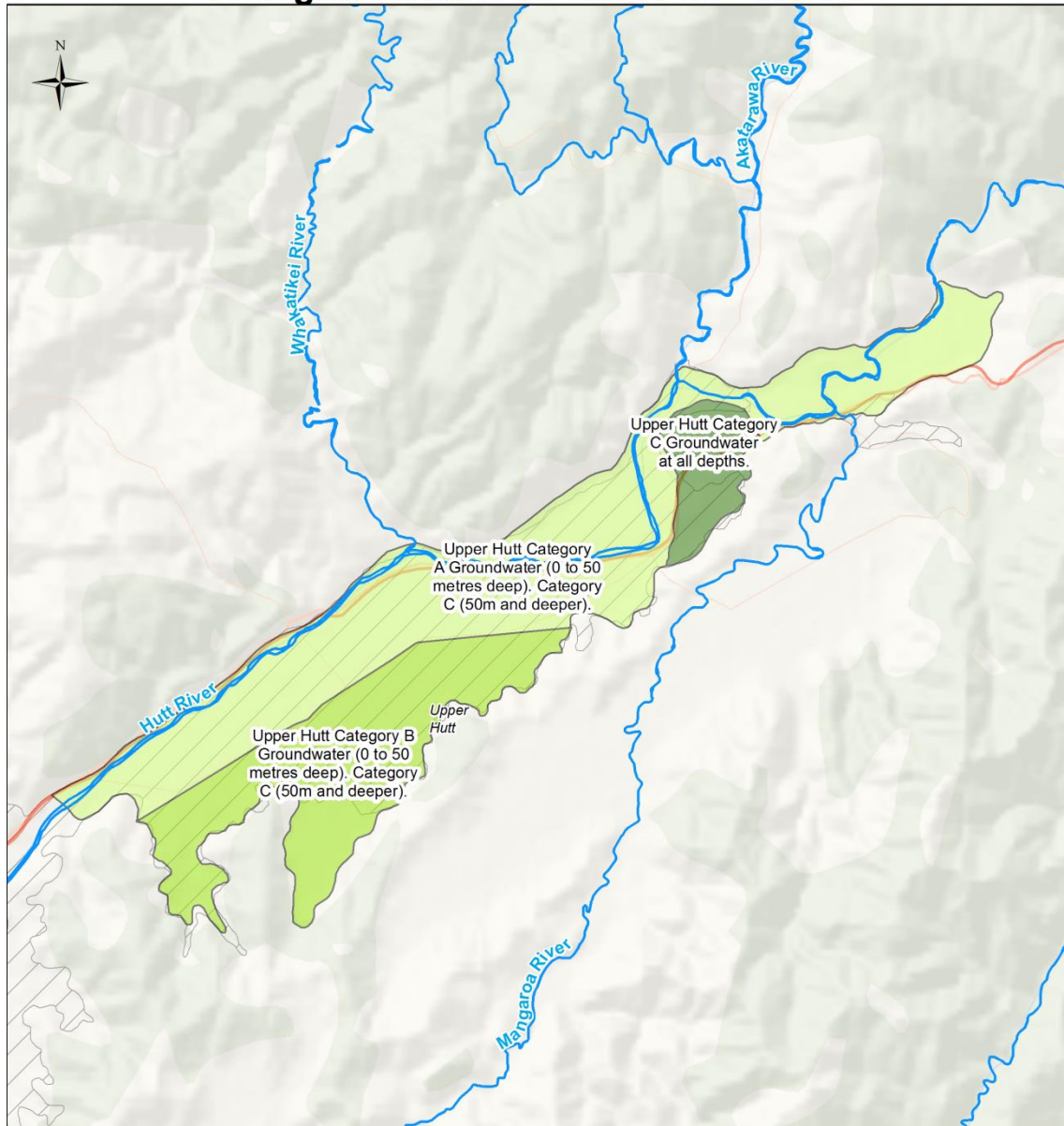
² This limit has been derived as a default based upon one of two rules; for rivers with a mean flow of greater than 5,000 litres/sec, the allocation amount is equal to 50% of the natural seven-day **mean annual low flow** (7d MALF) and for rivers with a mean flow of less than 5,000 litres/sec, the allocation limit is equal to 30% of the 7d MALF .

Table 8.3: Groundwater allocation amounts for groundwater not directly connected to surface water in the Wellington Harbour and Hutt Valley Whaitua

Catchment management units for the Te Awa Kairangi/Hutt River catchment (shown in Figures 8.1 and 8.2)	Allocation amount (m ³ /year)
Upper Hutt category B groundwater (not directly connected) and Upper Hutt category C groundwater	770,000
Lower Hutt category B groundwater (not directly connected)	36,500,000 [Waiwhetu Aquifer and Taita Alluvium] ³

³ This allocation volume includes depletion equating to 600 L/sec from the Te Awa Kairangi/Hutt River

Figure 8.1: Te Awa Kairangi/Hutt River and Upper Hutt groundwater in Tables 8.2 and 8.3



This version of the map is not complete. The version of this map available online through the online web map viewer shows the complete, detailed information on a GIS overlay that is not shown on this hard copy. The online version is available on the Council's website at <http://mapping.gw.govt.nz/gwrc/> (select theme Proposed Natural Resources Plan 2015) and can be accessed from the Council offices or public library.

— State Highway — River ▨ Urban Areas

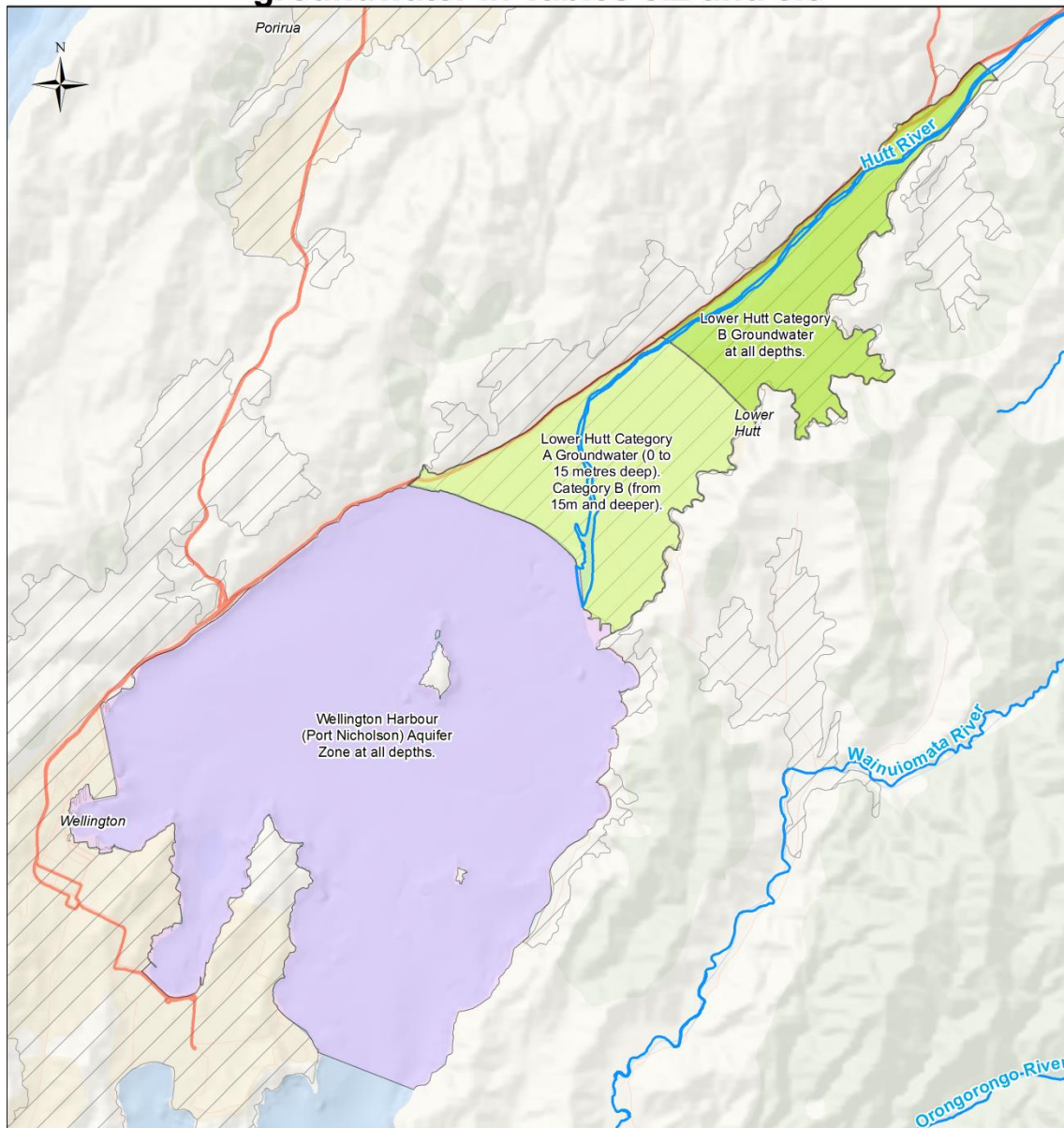


Basemap: World Oceans Base
Projection: NZTM 2000



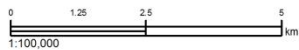
Copyright
Basemap: Esri, DeLorme, GEBCO, NOAA NGDC,
and other contributors
Topographic and Cadastral: LINZ & CoreLogic Ltd

Figure 8.2: Te Awa Kairangi/Hutt River and Lower Hutt groundwater in Tables 8.2 and 8.3



This version of the map is not complete. The version of this map available online through the online web map viewer shows the complete, detailed information on a GIS overlay that is not shown on this hard copy. The online version is available on the Council's website at <http://mapping.gw.govt.nz/gwrc/> (select theme Proposed Natural Resources Plan 2015) and can be accessed from the Council offices or public library.

— State Highway — River  Urban Areas



Basemap: World Oceans Base
Projection: NZTM 2000


greater WELLINGTON
REGIONAL COUNCIL
Te Pone Matua Taiao

Copyright
Basemap: Esri, DeLorme, GEBCO, NOAA NGDC,
and other contributors
Topographic and Cadastral: LINZ & CoreLogic Ltd