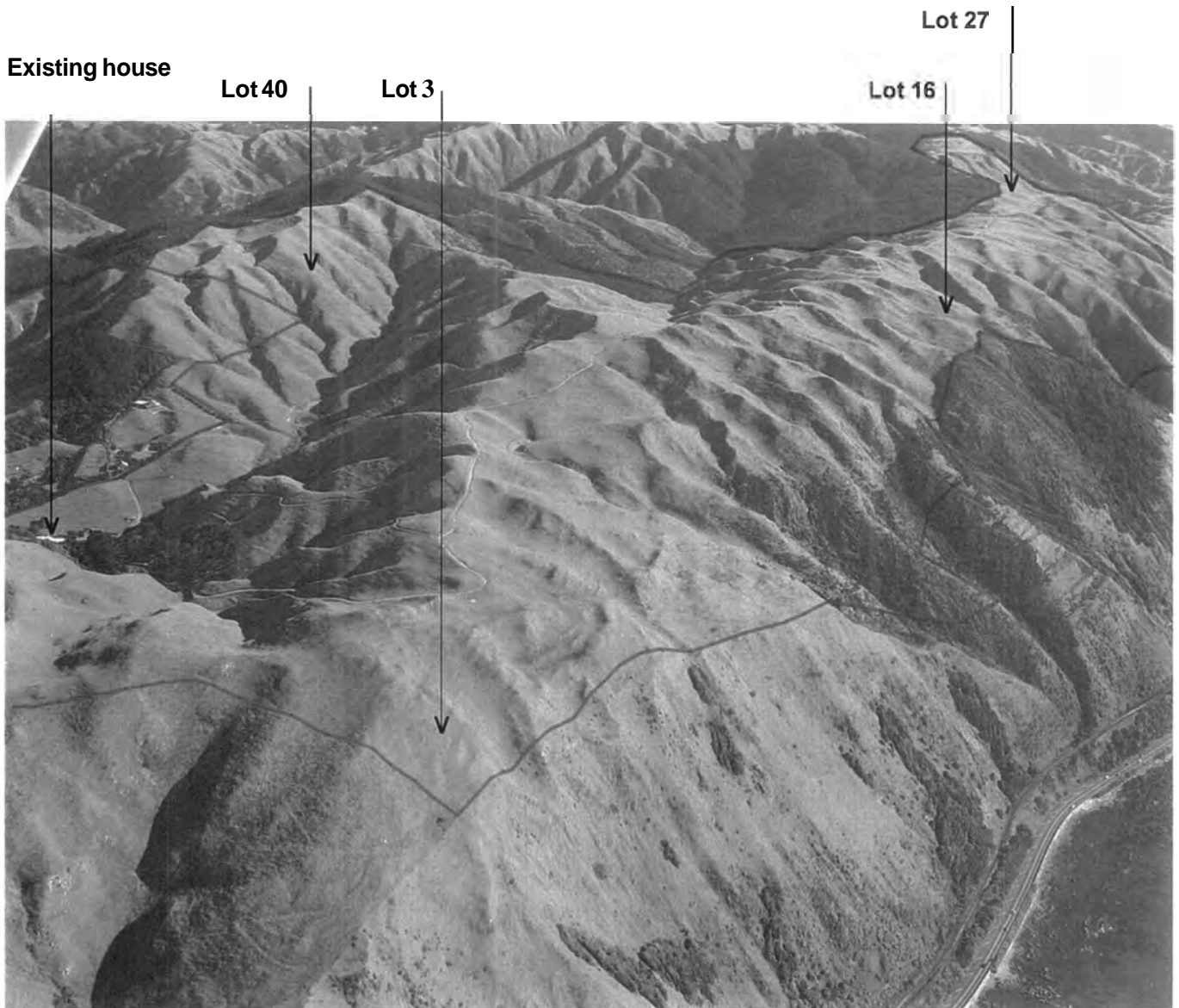


# Tunapo Subdivision Proposal

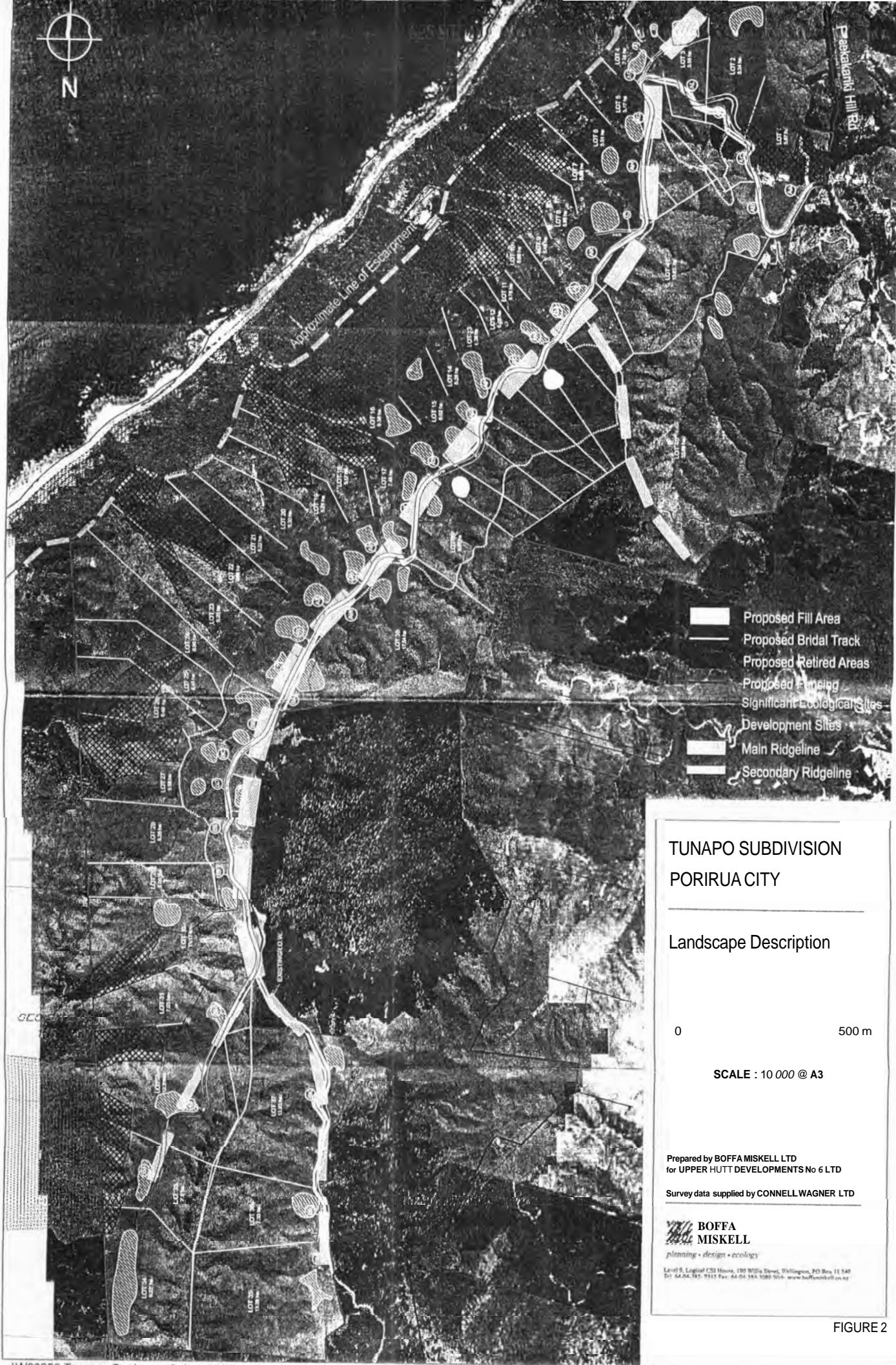
## Location & Photograph Viewpoint Map

Figure 1



**Figure 10**

The boundary line position is indicative and shows the linear configuration of the site on the landform. The view, toward the south, shows the elevated northern end above the steep coastal escarpment in the foreground. The rock bluffs mark the top edge of the escarpment, with areas of native vegetation on its face. The farm track follows the main ridge over the hilly topography. **SH1** and the main trunk railway line are at the foot of the escarpment. (photograph by Graham Hancox , IGNS)



**TUNAPO SUBDIVISION  
PORIRUA CITY**

**Landscape Description**

0 500 m

**SCALE : 10 000 @ A3**

Prepared by BOFFA MISKELL LTD  
for UPPER HUTT DEVELOPMENTS No 6 LTD

Survey data supplied by CONNELL WAGNER LTD

**BOFFA  
MISKELL**  
planning • design • ecology

Level 9, Logical CSI House, 150 Willis Street, Wellington, PO Box 11 540  
Tel: 64 04 381 9313 Fax: 64 04 384 1080 Web: www.boffamiskell.co.nz

**FIGURE 2**