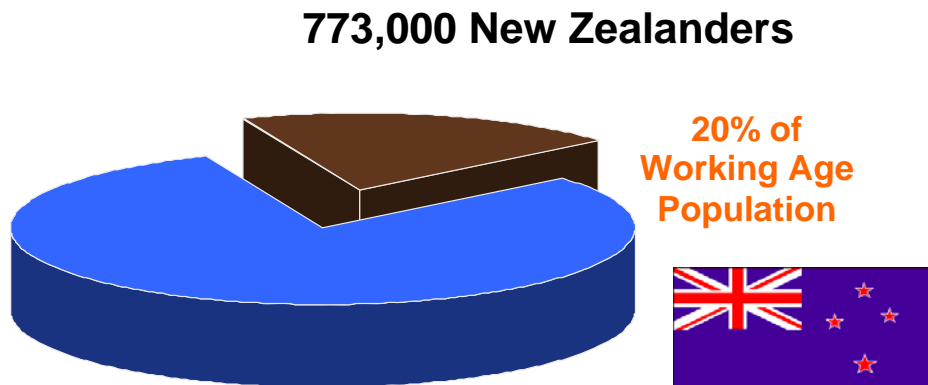


Proposal to establish a collaborative and consultative Advisory Group to the Greater Wellington Regional Council.

NZ Census 2001, people with disabilities:



Background

The Wellington City Council's Disability Reference Group was formed in 1996. The Disability Reference Group (DRG) advises the Council on issues that concern people with disabilities in Wellington. The group responds to issues raised by the Council as well as raises concerns expressed by people with disabilities.

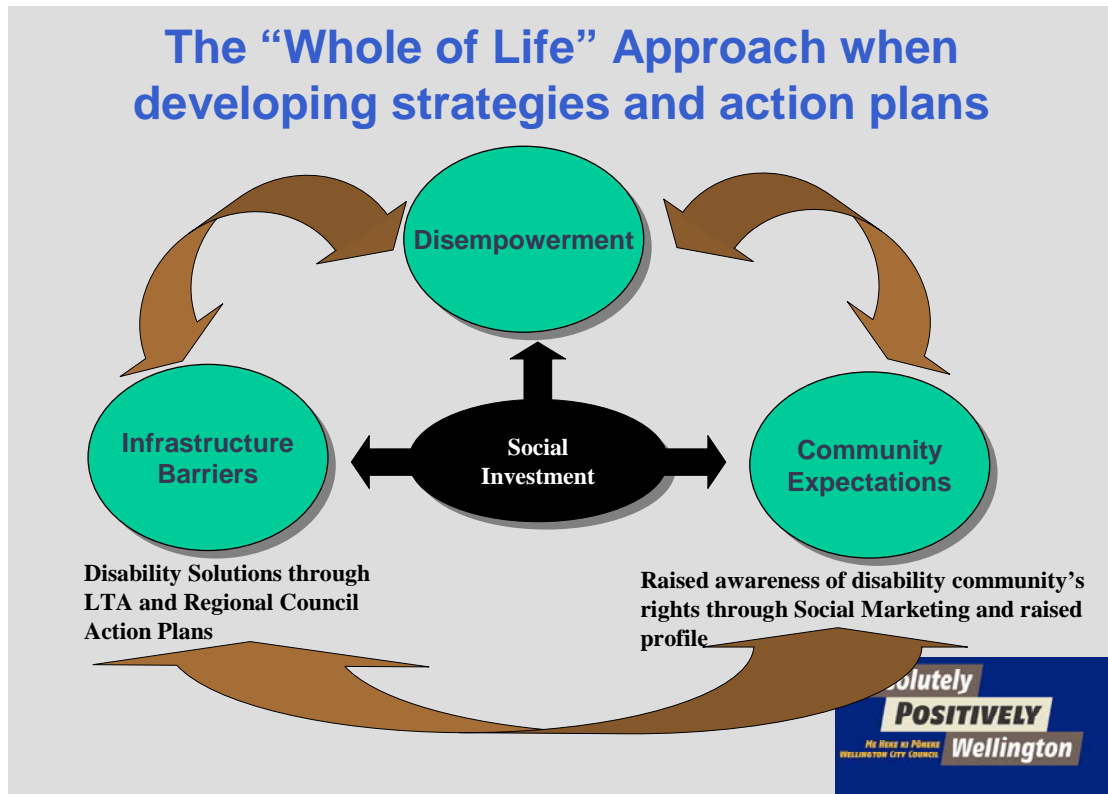
The Wellington City Council expects the DRG to advise on and assist with consultation with people with disabilities. The DRG may, when necessary, activate its own response from people with disabilities to ensure broad consultation.

The DRG consists of nine members from the community who either have a disability or who have experience of living with a disability. The group also has one Councillor Representative. As all disability groups cannot be represented on the group, it is envisaged that members have a broad knowledge of disability issues.

Members of the DRG meet once a month or if business dictates extra meetings may be called. Members are paid a meeting fee and reimbursed for travel and support costs associated with membership.

The Group is supported in Council by the Community Advisor for Disability. This full time position was created in 2002. The purpose of the role is to effect change within the Wellington City Council enabling an inclusive and

accessible city for all citizens. The Accessible Wellington Programme drives inclusion and accessibility by entering into strategic partnerships with business units and external agencies to become stakeholders in policies and projects which advance the programme.



Proposed GWRC Disability Reference Group

I understand that GWRC would require a geographically based membership and to that end I have had informal talks with Disability Advisors in the Hutt and Porirua areas. They are enthusiastic and confident that people with disabilities could be appointed from their networks currently in place in their respective areas.

Furthermore, it is vital that the GRWC Disability Reference Group establishes a position (Disability Advisor) within the organisation to support the group and establish a work programme within the GWRC to advance issues and recommendations determined by the Group and the Advisor. It is envisaged that the Group and the Advisors' work programme becomes broader than merely transport issues. People with disabilities must participate in the planning, funding and implementation processes at central, regional and local government levels.

A Regional approach to access

- A regionally co-ordinated approach the “best approach”

Through

- A Regional Disability Advisory Group

Which has

- Membership from other advisory groups or members of the community

And



A Regional DRG can advise on:

Fundamentals of the accessible journey

Approachability

Accessibility

Usability

