
Parks, Forests and Utilities

August to October 2007

Parks

August to October 2007

Parks

Review of operations for the period ended 9 November 2007

1. Manager's comments

1.1 Battle Hill Farm Forest Park Management Plan

Following the Parks and Forests Hearings Committee meeting on 19 September finalisation of the *Battle Hill Farm Forest Management Plan* is being held awaiting a further round of public consultation. Decisions about the timing for this consultation will be made once further information about the proposed wind-farm is provided by the developer, RES NZ Ltd.

1.2 Policy reviews

An Ara Tahi workshop on the Concessions Policy Review was held on 12 October. A paper will be taken to the Ara Tahi Committee meeting in December to formally recognise the feedback made at the workshop.

Planning officers are also currently working on providing submissions to the following;

- Local Government Act 2002 Review, regarding alcohol issues in the parks
- Porirua City Council District Plan review, particularly the open space and recreation review
- Game Animal Panel discussion paper on wild animal management.

1.3 Update on 1080 operation

The aerial 1080 operation for Akatarawa Forest was completed on 6 September and Mangaroa/Kaitoke the following day. Allegedly, some bait was deliberately moved from the operational zone into the areas that had been designated as "dog safe" zones and two dogs died when they ate some of that bait. One of the dogs had been in Tunnel Gully, while the other was in Upper Hutt City Council's Trentham Memorial Reserve. Both Kaitoke Regional Park and Tunnel Gully in Pakuratahi Forest were closed to the public for a week in mid-September while staff searched for bait in the amenity areas. These areas were closed to dogs until 19 October when the 1080 had leached from the bait. The forested areas of Akatarawa, Pakuratahi Forests and Kaitoke Regional Park will continue to remain closed to dogs until the monitored carcasses have broken down. Media releases have been sent out updating the public on a regular basis.

A flood event on the Hutt River on 8 October activated a search of the banks of the river and the Petone/Eastbourne beaches for any possum carcasses that may have been swept out of the operational 1080 areas with the flood waters. On the Kapiti Coast side, the Waikanae River was also checked. Possums were found and removed from the Eastbourne beaches and along the Hutt River. Signs were erected in those areas warning dog owners of the risks to their dogs from scavenging of any carcasses.

1.4 Spate of vandalism in the parks

This period has seen the earlier start of daylight savings and a generally dry and mild spring. With the increase in sunlight hours after work, members of the public are starting to use the parks more, which is usual this time of year. What is also usual this time of year is the increase in vandalism, usually coinciding with the school holidays.

Toilet blocks tend to wear the brunt of the vandalism with toilet roll and soap dispensers being broken, toilet paper stolen, bowls smashed and sinks ripped off the walls. In one case, a fire was set in one of the stalls.



Greater attention is now being paid to the choice of materials.

1.5 New parks

At Whitireia Park, staff members continue a close involvement with the Department of Conservation (DoC) over operational issues. Gorse control and roading improvements are scheduled to be carried out this year from funding dedicated by GWRC. Ongoing possum control and monitoring continue and the park remains possum free.

Staff members are continuing to liaise with both the Guardians of Whareroa and DoC over the future management of Whareroa. We are assisting in preparing a Development Concept Plan for the property, which will outline the costs and benefits associated with ongoing management of the property.

2. Environmental planning and implementation

2.1 Pest control

2.1.1 Pest animals

Both Akatarawa Forest and Mangaroa/Kaitoke have been recently remonitored to check for possum numbers. In Akatarawa Forest possum levels had fallen from 10.4 percent to 0.4 percent residential trap catch (RTC). The Tb Mangaroa/Kaitoke aerial 1080 operation results were 0 percent RTC (down from 2.7 percent) in Mangaroa (Pakuratahi Forest) and 0.2 percent RTC (down from 8.7 percent) in the front faces of Kaitoke Regional Park. These results show that the operations have been very successful in reducing possum numbers on GWRC land.

A professional goat control operation was completed in the Wainuiomata/Orongorongo water area collection during September. Thirty-three goats, 19 pigs and 3 deer were culled. There is ongoing reinvasion of goats from the DoC property on the southeastern Orongorongo boundary.

2.1.2 Pest plants

The new weed team is up and running. Weather has been variable since they started in late September but work is now under way again on climbing asparagus (snakefeather) in East Harbour Regional Park. Some control of boneseed was also completed by the team on the escarpment beyond Burdan's Gate. Parks has been stopping the southward expansion of the boneseed infestation near Burdan's Gate for the past six years, to protect the Lakes Block from this invasive weed.

2.1.3 Monitoring

Bird monitoring has been under way across GWRC managed lands. Bird surveys have been completed in Belmont Regional Park, Battle Hill Farm Forest Park and Queen Elizabeth Park but are still in progress in the Hutt Water Collection Area and Kaitoke Regional Park. Bird monitoring in the Wainuiomata/Orongorongo Water Collection Area will take place throughout November, while MIRO volunteers are currently completing their bird surveys in East Harbour Regional Park.

A mustelid/rodent monitor was completed in East Harbour Regional Park in late August. Rodents inside the Mainland Island site (18 percent tracking rate) were tracking at much lower levels than outside the mainland island (52 percent). Mustelids were recorded outside the intensive control zone at 4 percent tracking rate.

2.1.4 Wainuiomata Mainland Island

An increase in bait take was recorded in the early October bait fill. This could mean that the rats are becoming more active with the warmer weather and are seeking out food. A possum monitor was recently completed inside the mainland island and outside in the non-treatment site. The results are: 0.5 percent RTC inside and 1.9 percent RTC outside the mainland island. This is good news, as it means that the possum trapping techniques used in the intensive control area are working and are keeping possum numbers below the target rate of 2 percent RTC.

3. Western sector

3.1 Belmont Regional Park

Public access on Waitangirua Farm reopened on 20 October and visitors have again been able to enjoy the opportunity to traverse the marked routes across the property. However, high winds on the hilltops in the parks during the period have, at times, added an extra challenge to visitors and staff alike.

The Ranger has been working with the farm lessee (Landcorp Farming Ltd) regarding the scheduling of future fence maintenance and weed control. The recent GPS mapping and condition survey of the fences has provided very useful base information for this purpose. At Waitangirua Farm we have completed an asset condition assessment of all fence lines on the property and Opus International Consultants Ltd has prepared a report on maintenance for the farm buildings.

The Ranger has liaised with the Korokoro Environmental Group regarding various issues, including the implications of the “Dowse to Petone” motorway upgrade project. This will have an impact on present and future access to the Cornish Street entrance of the park.

A mountain bike cross country race event was held on Labour Weekend by the PNP cycling club. This was based from the Stratton Street entrance and used the Woolshed facility building as race headquarters. There were 108 competitors who enjoyed riding the Belmont mountain bike tracks. Sunshine and light winds helped the day to be a great success. This weather was a marked contrast to the high winds and rain of the previous few days. Future events using this location are now being planned.

The Capital Multi-sports Club is also planning a running/walking event to be held from the Oakleigh Street entrance in December.

The Friends of Maara Roa held a planting day at Cannons Creek. There was a good turnout, with over 200 plants put in the ground.



Transpower contractors have felled some trees in Belmont Forest above Stratton Street to improve clearance under transmission lines. A mountain bike track has been permanently diverted around this area as a consequence.

3.2 Battle Hill Farm Forest Park

Areas of the farm opened after lambing on 20 October, in time for Labour Weekend. The long weekend saw a big increase in campers and visitor numbers. It also meant the start to the eventing calendar for both Pauatahanui Pony Club and the Battle Hill Eventing Committee, as there is a horse event on nearly every weekend from now to the New Year. The Pony clubs’ jumping events on 27 October and 4 November, and the Pauatahanui Pony Club’s under-12 gymkhana were well attended. The Ranger has also been liaising with the Battle Hill Eventing Committee regarding proposed new additions and upgrades to the cross country course. Work will commence, as per their licence, once they have provided plans and the new structures have been approved.



The Ranger has cleared and repaired the damaged fence between the Spring Paddock and Battle Hill of old man pines that fell down in a storm several years ago. There was a virtual forest of onga onga (tree nettle) in this area and this made for some deft touches with the chainsaw to clear a path either

side of the fence. A fencing contractor will renew the fence in the gully, which is of the old No. 8 type, after the remaining trees have been removed in February.

Conservation Corps helped out with tidying the woolshed yards, planting and cleaning out the cattle stops. Ranger staff members gave the Corps an informative talk on our trapping programme and the types of traps we are using on Battle Hill to control pests.

We are trialling poplar poles in Transmission Gully to help prevent subsidence and slips. There are three different poles being trailed so that in the next five to six years we can see what is working best.

New Civil Aviation regulations are raising some concern for the ongoing use of the Battle Hill airstrip. With the continued subdivision on neighbouring farm properties, coupled with new regulations over flight path safety requirements over and around dwellings, it seems inevitable that the airstrip will be decommissioned. Staff members are investigating replacement options.

On a brighter note, the ranger has taken two lambs to a day care centre to promote Battle Hill, as well as giving under 5 year olds the chance to bottle feed and touch a lamb. This visit is as an opportunity to help promote Battle Hill as a place to come for these groups and, by taking pamphlets about Battle Hill, it may also encourage the families of the little ones to visit as well.

Five orphaned lambs also come in handy over the long weekend. The Ranger arranged set feeding times at 9am and 5pm and there was no shortage of volunteers to help feed them.



3.3 Queen Elizabeth Park



The Friends of Queen Elizabeth Park hosted a barn dance to celebrate the completion of the barn restoration. The event attracted about 300 people from a wide range of demographics. There was an 85 year old woman square dancing with an 18 year old boy. The event really was a great community gathering.

The landscaping in front of the barn has started with the planting of three kowhai. The ranging staff members have identified a number of pohutakawa

that will be relocated from the dunes and placed in front of the barn. The transplanting will take place later this autumn.

We had our final corporate planting day during this period. BNZ brought out about 20 staff to plant alongside the MacKay's wetland. It was a great team building day for the group and great for the park, as they put about 1,000 plants into the wetland.

The MacKay's entrance is being tidied up. A new coat of paint was put on the iron gates and the dilapidated fencing was replaced with capped timber rail fencing.

The construction team installed the new United States Marine panels. We have had a number of positive comments on the upgrade.

Officers were also busy tidying up the nursery workshop. The nursery has grown over the last couple years, so have the number of volunteers that come to help with propagation and maintenance. Officers designed a car park to accommodate the increased number of vehicles and we are working on providing a smoko room so the volunteers can enjoy a well deserved break.

The Tramway Museum hosted their "Sunday Funday". The numbers are starting to pick up for this monthly event. Lots of people come out, walk through the stalls, check out the museum, take a pony ride, enjoy some fresh hot chips, and ride the tram down to the beach where they spend the afternoon playing in the sand!



4. Eastern sector

4.1 Kaitoke Regional Park



As was mentioned previously, the park was closed for 10 days aerial application of 1080 bait (as part of the Akatarawa possum control operation took place from 7 September 2007). It was then closed again from 14 to 19 September as a result of alleged bait tampering. The park has now opened to dogs under supervision and surveillance is in place.

A Wellington Rover tour guide operator was assaulted in a road rage incident within the park in late October. The Ranger was also threatened. Officers are reviewing how rangers deal with these situations and also planning for how to handle New Year's Eve, traditionally a troublesome night because of drunken behaviour.



Plantings continue, with 50 totara, manuka, toetoe and flax planted in the park entrance way at Waterworks Road. Community workers have also been busy; inter-planting 300 seedlings throughout the campground gardens. Four totara have been planted in the Celebrate Life Grove. The planting season has now finished and will begin again next May.

The annual kereru counts in the campground have been completed. The kereru are out feeding on the new willow buds and shoots. A record 109 were counted one morning, with 42 alone seen in a single stand of trees.



4.2 East Harbour Regional Park

4.2.1 Ngaumatu Track

Site meetings were held with representatives of Point Howard and Lowry Bay Residents Associations, East Harbour Environmental Association and GWRC regarding the proposed Ngaumatu track upgrade, with positive vocal approval for this project. This track, along with the Dillon Street track, connects Point Howard to Lowry Bay and passes through some of East Harbour's best remnant coastal forest. Whereas the Dillon Street track has been recently upgraded, the Ngaumatu track remains in poor condition and is a safety issue. However, park staff members have started work on this track and the situation

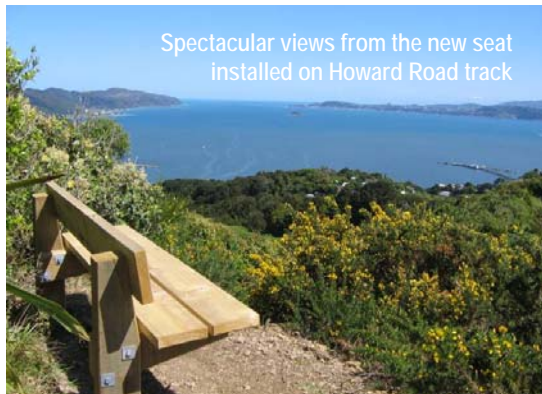


is now being rectified. The old track line was considered to be too steep and unable to be maintained, so a new line has been marked through the bush. This has been done in consultation with members of the local community. It is a fairly tricky operation but, once completed and the initial earth movement revegetates, we will gain an easily maintainable asset set within a high value natural

environment. Because of the easy road access, there will certainly be future opportunities for environmental education and the promotion of joint volunteer/GWRC environmental work carried out at East Harbour Regional Park.

4.2.2 Howard Road track

The Howard Road track improvement project was completed a few years ago now and, since then, the walkway has seen a vast increase in foot traffic from both locals and visitors alike.



Members of the Point Howard Residential Association thought it would be a good idea to install a seat at a viewpoint halfway up the track. After checking out the site with one of the locals, their reasoning became clear. Parks staff members cut in a small access track from the main route and installed a standard park seat

overlooking what has to be one of the finest views in Lower Hutt.

A 6 m section and 15 m section of boardwalks have now been installed on Kohangapiripiri track (Lakes Block) to bring the tracks in these previously muddy areas to standard.

With the assistance of a Point Howard Residents Association volunteer, Wilding Pines were removed from the Howard Road track.

4.3 Wainuiomata/Orongorongo Catchments

Strong winds during October kept ranging staff busy clearing trees and limbs blown over on the Orongorongo access road, as well as a large dead gum tree which had fallen across the Gums Loop walk in the recreation area. (This occurred the same day that winds blew vehicles over on State Highway 2.)



The Ranger continues to keep an eye on the gums around the track with assistance from the Environmental weed team, collected rubbish from the old caretaker's house in the Orongorongo Valley. A day was spent removing some of the rubbish using a powered



wheelbarrow. The site has only recently had access for such machinery which has enabled us to get a barrow onto the site. This operation in the past would have been quite costly as the material would have had to be flown by helicopter from the catchment. More material will be removed as weather and time allows.

The first of this season's walking tours was held on 14 October and was very well attended. The second Wainuiomata tour was held on 4 November and was fully booked, as was the first of the Orongorongo tours for 2007/8.

Recreation area tracks and culverts have been tidied, and the track from the Wainuiomata side of the tunnel to the Whacky pit has been repaired, raked and weed sprayed in preparation for the catchment tours.

A small dam in the Lower Wainuiomata River was cleared. Damming had started erosion on the riverbank causing small native trees to fall into the river. The job required staff to wade into the river, cut up the material and remove to the riverbank.

4.4 Akatarawa/Pakuratahi Forests

4.4.1 General

The 15 tonne digger has completed the track maintenance in the Akatarawa Forest. Roads that have been upgraded are Clearys, Rimu, portions of the Hydro Road and several unnamed tracks out above Drapers Flats and down through to the Dude Ranch. These secondary tracks did not receive maintenance last year, as they only have work done every two years, which seems to be work best to ensure the track's long-term viability.

4.4.2 Orange Hut

The hut has been painted, and is very bright orange! Staff members are now looking at providing toilets for the site, in conjunction with ARAC.

Officers have also been helping DoC to do upgrade work on their portion of the Rimutaka Incline.

Six 4WD drive events involving 40 vehicles were held during this period, as well as one orienteering event, one army exercise and one Police training exercise.



Marketing and Design

August to October 2007

Marketing and Design

Review of operations for the period ended 9 November 2007

1. **Manager's comments**

At the time of writing there were already some interesting insights coming back from the focus groups on the water supply strategy. We look forward to sharing these with GWRC and the city council customers, and developing a robust plan for public consultation in 2008. The spring mulching campaign has added to general awareness that we need to reduce garden water consumption and will be a useful lead in to the more intense conversations to be had next year.

Once again there has been an enthusiastic response from partners and staff towards developing and promoting events in the three month Regional Outdoors Programme. Many residents are "in the know" and are already ringing to enquire when bookings open. However, there are usually at least 30 percent of participants who visit a regional park for the first time through this programme. There is nothing like a positive experience at one of our events to reinforce to people what a great Region we live in!

2. **Water Supply**

2.1 **Annual Report 2006/7**

This provides our customers and other stakeholders with a detailed record of our activities and achievements for the 2006/7 financial year. Copy, graphs and water supply data were supplied to the designers to be laid out in late August. The draft final report was provided to the Policy, Finance and Strategy Committee for approval on 27 September and printed in the week following. The report is currently being distributed.

2.2 **Water Supply strategy public opinion research**

Three potential research providers were approached in August for expressions of interest to conduct research into how people use and value water at present and what opinions and preferences exist regarding future water supply options for the Greater Wellington urban area.

The outcomes are intended to inform GWRC and city councillors and officers in their consideration of a water supply strategy for consultation, and identify the key tasks for consultation related communications. A brief was provided to all three providers and selection criteria methodology was developed. The proposals were subsequently reviewed and we appointed UMR Research. We then wrote and refined the discussion guide and background information to inform focus group discussions.

The in-depth (focus group) component of the research started on 31 October. A quantitative stage, to test the extent to which different opinions and preferences are held, will follow.

2.3 Customer meeting

Planned for 12 November, this meeting will include an update on the public opinion research and other items relating to the Wellington Water Management Plan.

We face a significant challenge in 2008 regarding effective communication of our options regarding the Region's water supply. During the meeting we will also discuss objectives and timeframes for our communications strategy, so that all stakeholders are seen to be working together towards an agreed course of action.

2.4 Draft Wellington Water Management Plan

Parts of the research outlined above will be used to refine the analysis of potential savings for water use efficiency options in the Wellington area. We have also commissioned a consultant to locate and analyse data that should help identify water use for different appliance types within homes. Various sections of the draft technical report of the plan will be updated during the next two to three months as this information becomes available.

2.5 Spring mulching campaign

During the period a promotional campaign encouraging gardeners to use mulch was developed to run during November. This work extends and supports our summer water conservation campaign. We have worked with Corporate Communications to develop the campaign under GWRC's *Be the Difference* household behaviour change programme. It uses print and radio advertising, the GWRC web site and media activity to outline the benefits to gardeners of using mulch to summer-proof their gardens. Mulching is one of the key components of effective water wise gardening. In support of the campaign, 13 Nursery and Garden Industry Association (NGIA) member retailers are offering low prices or specials on mulch during November. Once the promotional part of the campaign finishes, we will follow up with retailers to assess its effects.

2.6 Summer water conservation campaign

The summer campaign is being planned to run during January and February 2008. It will employ the same strategy and advertising material as was used in the summer of 2007. The media schedule and various other details will be developed during November.

2.7 History of the water supply

This publication extends and updates a water history published by Wellington Regional Council in 1986. From late August proof reading and final design adjustments were being done, followed by checking of printer's proofs and final sign-off. Copies were distributed to sitting Councillors on 27 September. Electronic versions are being prepared for the GWRC web site. Since then we have distributed copies to new Councillors, local Members of Parliament,

mayors and key staff of local councils and libraries. Those contributing to its publication also received a complementary copy.

The publication is also available to be downloaded from our website and we have written to all the schools in the Region to advise them of this.

Other promotions include a media release to both press and radio, together with copies of the publication. We are also exploring opportunities for interviews with our author Peter Cooke and GWRC's John Morrison.

3. Parks

3.1 Regional Parks' report

This report was completed during the period and once approved will be distributed to decision makers and influencers in and associated with territorial authorities, the Regional EDA, Government (e.g., SPARC, district health boards) and non-Government agencies with whom we share some common objectives. A separate report gives more detail on the regional parks report.

3.2 Signs

3.2.1 Queen Elizabeth Park

The seven signs depicting the story of the United States Marines at Queen Elizabeth Park were installed on-site at the Whareroa Road "Marines" interpretation area during the period. Our new construction team leader built some excellent frames to accommodate the panels, so that they fit in with the 1940s style hut "facades".

Staff members have been working with Dr Les Molloy, Natural Heritage Consultant and Tony Edwards, Geologist, on the form and text of a small geological trail at Queen Elizabeth Park. A visit confirmed five sites for the signage, to be located at points ranging from the inland dunes through to the foot of the escarpment across State Highway 1.

3.2.2 Battle Hill history trail

We have completed vigorous consultation with both Ngati Toa and Te Atiawa on what is a fascinating story, with good results and understanding that will go beyond this project. Both the final text is to be completed and draft designs received in early November.

Two of the signs will be located near the campground in the front paddocks, while three others will be found en route up Battle Hill itself, culminating in the final sign just below the summit. Staff members are planning to use three large macrocarpa slabs found in storage on the farm as the backing for the three hillside signs, which will add to the authenticity and ruggedness of the trail.

4. Events

4.1 Regional Outdoors Programme

Staff members concluded the last of the reconnaissance trips during which we finalised the route, timings and level of fitness required for any new or altered events. The dates, content and overall structure of the programme were also completed. Events will be listed in *Elements* and on our web site, and open to book from 3 December. The programme will also be publicised via selected press and radio advertising, with the launch and specific events promoted via press releases. Local city and district councils are also very helpful in publicising the events in their respective areas.

The preparations have included updating a brochure describing the 1846 conflict at Battle Hill. Together with the new interpretation panels, this will help retell this fascinating story at the launch of the trail on 9 March. From this point we gear up for bookings, update and complete event plans for the start of January.

We were mindful of Councillors' wishes to include events for Maori and Pacific Island communities in the programme. It features a weaving event at Paekakariki and, of course, the launch of the history trail above. During our preparations staff members met with Wirangi Luke from Te Runanganui o Taranaki Whanui to look at an opportunity for an event based on Maori history along the Hutt River Trail. After discussions, this idea did not come to fruition but it was good to make contact and possibly consider other ideas for the 2009 programme.

There is also ongoing contact with Tiketi Auega, the secretary of the Eastern Porirua Residents' and Ratepayers' Association, and Samoan community liaison officer for Whitireia Polytechnic. We have discussed opportunities for possible use of Battle Hill Farm Forest Park as part of the Strong Pacific Families Festival and it may be that the Go Bush event at Kaitoke Regional Park will also be of interest to their young people.

There is more background on what is a very popular programme in section 9 of this report.

4.2 Buggy walks

The Lion Foundation Buggy Walk was held at the Botanic Gardens on the first Thursday of October and attracted an estimated 500 parents, grandparents, carers and babies, and older children. This second annual "feature" buggy walk was supported by Classic Hits, Tupperware, Weight Watchers and Caffè L'affare, to name a few of the sponsors. Each participant received a GWRC water bottle and included in their "goody" bag was a schedule of the next six months of Buggy Walks in the regional parks.

Unfortunately the November buggy walk planned for Hikoikoi Reserve in Petone was cancelled because of bad weather. The December walk is planned to start at Harcourt Park, cross to the stopbank by Totara Park and loop back along the Hutt River Trail to the start point.

5. Networking

At the Heart regional physical activity plan

At the time of writing the plan was in the final stages of completion and we have discussed options for a governance and management structure to take it forward to the implementation stage. With this in mind, the group is developing an Expression of Interest to lodge for SPARC funding over three years that would support regional collaboration and communication across stakeholders. The ensuing application needs to be lodged early in 2008.

For this to be successful, each of the stakeholder organisations (including GWRC) is seeking adoption of *At the Heart* by their respective councils or boards. A paper regarding this will be presented to a Regional Sustainability Committee meeting early in 2008.

6. Community liaison

6.1 East Harbour Regional Park

Each of the attendees at the function to launch the Park Management Plan has been sent a copy of the new East Harbour Regional Park Resource Statement. This is a substantial and well researched document that recipients should find interesting and useful.

In the accompanying letter we reiterated to the attendees that we are going through our review of relationships with park interest groups, with a mind to developing the best way to engage with the East Harbour community. We intend to contact them again early in 2008 to move this forward.

6.2 Friends of Queen Elizabeth Park

During the period staff members attended the monthly meetings of the Friends of Queen Elizabeth Park. The Friends (in conjunction with GWRC) organised a very successful opening of the park stables and barn dance at MacKays Crossing on 29 September. The official duties were carried out by Councillor Margaret Shields and Jack Rikihana of Te Runanga o Atiawa ki Whakarongotai, tangata whenua of the northern part of Queen Elizabeth Park. Around 300 people attended at various times during the afternoon/ evening. On 27 October Ross Jackson and ranger Nikki La Monica took the new Friends' Committee members on a field trip around the park, looking at various sites and discussing future developments.

Following various discussions with the Friends and Kapiti Coast District Council (KCDC) in relation to their Cycle, Walkway and Bridleway Strategy we have engaged Simon Kennett to prepare a design for a recreational cycle route through Queen Elizabeth Park. KCDC is in turn considering a design for a commuter route between Paekakariki and Raumati South. It is likely to run alongside the park's eastern boundary in the north and through the park for at least some of the way south of MacKays Crossing. Both these routes will ideally be linked to allow loop rides.

6.3 Friends of Belmont Regional Park

There are some fragmented pieces of remnant vegetation adjoining Hill Road in Belmont Regional Park that are close to a registered bush covenant near the park entrance. If fenced, replanted and protected, this could form an ecological corridor between the remnant and Speedys Reserve. The group is investigating this as a potential project for them to tackle. They have talked to the Belmont Pony Club, which leases part of the area, and the club is happy with the idea.

The Friends are very interested in the development of the new Park Management Plan and possible proposals for a wind farm. We will keep them informed as progress unfolds and we can expect their comment on the plan.

6.4 Friends of Maara Roa

The Friends recently held a small public meeting to discuss GWRC's ideas for more tracks leading into Belmont Regional Park from Cannon's Creek. The idea is to create easier, albeit 30 minute to 1 hour, loops from and around this entrance, as the walks available now are either very short or long and steep. This group is also intensely interested in the Park Management Plan.

6.5 Akatarawa Recreation Access Committee

We met with ARAC on 29 October for our regular three monthly liaison meeting. The Orange Hut is nearly complete, with the painting in progress and a fireplace being installed. During the meeting we discussed building a more environmentally appropriate toilet to replace the current "long drop" facility and other possible future projects.

7. Awards programmes

Environment awards

Judging was conducted, the winners determined and other arrangements finalised ready for the first GWRC Environment Awards Ceremony on 7 November. Four awards are to be presented to groups, businesses or individuals who have had a relationship with GWRC. The categories include school groups, resource consent holders, and community groups.

The quality of the applications was very high and in some cases the judges decided all applicants were worthy of site visits. At this point it is good to feel confident that the process has been well thought through and all the winners are very deserving.

We are also planning a "debrief" session following the ceremony to identify areas that worked well and/or can be improved on for the future. At this stage there is a general feeling that the awards are of a size and nature that, with a team involved, they may be managed within existing workloads and do not require onerous levels of time or expenditure.

8. Landscape projects

Whareroa Farm

The Development Concept Plan is nearly completed. Some further GIS data is required to accurately mark identified retirement and grazing areas, plus wetland protection areas and public access points and routes. Research into PFSI and carbon credit possibilities continues and is an important part of the plan.

The Guardians of Whareroa meet monthly and staff members attend to keep in touch with developments. There have been several meetings and site visits to discuss options for the property.

9. Regional Outdoors Programme 2008

9.1 Background

The 2008 Regional Outdoors Programme is the seventh in the series of the annual summer event programmes. Like those preceding it, this summer's programme is based in Wellington's regional parks and runs from around New Year until the end of March.

9.2 Objectives

The Regional Outdoors Programme contributes to two LTCCP success factors:

- More people visit the regional parks
- More people taking positive action for a sustainable region

The success of the programme stems from the variety of free/low cost events that are interesting and diverse in their content. Our aim is to provide outdoor participatory events. We encourage the people of the Region to come to the parks, including the not particularly fit or knowledgeable, and enjoy the activity in a safe and friendly environment.

9.3 2007 programme

Last summer the programme started with the *Anything Vintage Festival* and concluded with the *Porirua Grand Traverse* on 1 April 2007. There were a total of 49 events, 41 organised by GWRC, 4 organised by outside providers and 4 events organised by volunteer groups with GWRC input if required.

Total attendance for 2007 was estimated at 10,843 people. Attendance at GWRC events was 3,881, with an average participation of 95 people. Events organised by outside providers totalled 6,962 attendees and included the *Anything Vintage Festival* (5,000), *Karapoti Classic* (1,300), *Mt Lowry Challenge* (338) and the *Porirua Grand Traverse* (270).

9.4 2008 programme

9.4.1 General details

The programme for this summer starts on Saturday, 29 December 2007, with the *Anything Vintage Festival* at Queen Elizabeth Park and concludes with *Farm to Coast* on Sunday, 31 March 2008. We have a total of 54 events in the programme (45 GWRC events, 4 outside providers and 5 organised by volunteer groups with GWRC involvement if required).

9.4.2 Type of events

The range of events includes:

- Beginners' horse riding at Battle Hill and Queen Elizabeth Park
- Motorised recreation - *4WD Sunset Tour* (2 dates), *Mt Climie 4WD trip*
- Ecology walks – *Plant Life of the Park*, *Creek to Peak*
- Historical walks - *Battle Hill history launch*, *Old Coach Road history trail*
- Bush walks - *Upper and Lower Gollans Off track adventure*, *Farm to Coast* tramp.
- Events aimed at families with children - *Lion Foundation Buggy Walks*, *Kev the Wandering Kiwi*, and *Paws in the Park*.
- Annual events - Rimutaka Rail Trail, Lighthouse and Lakes walk

9.4.3 New events

- *Launch of the Battle Hill history trail* - which will evolve into a annual history walk
- *Farm to Coast* - Battle Hill to Queen Elizabeth Park tramp traversing Mt Wainui
- *Explore Belmont series* - a month long series highlighting the diversity of Belmont Regional Park through short to medium walks based at a different entrance each week.
- *Twitching in the Park* - a bird walk at Queen Elizabeth Park
- *Harakeke - Flax Weaving on the Coast* – in-association with the local iwi and weaving group, which includes a short walk
- *Beginners' Guide to Fly Fishing* on the Hutt River Trail, which is to be run twice.
- Hutt Valley Gliding Club open weekend

9.5 Partners

We work with a number of different territorial authorities such as Upper Hutt and Hutt City Councils on *Kev the Wandering Kiwi* series, and Upper Hutt City Council promotions team for *Paws in the Park*. Other agencies include Sport Wellington Region for the monthly *Lion Foundation Buggy Walks*.

9.6 Volunteers

We also work with various volunteer groups and individuals. These include the Friends of Belmont Regional Park (*Old Coach Road history trail* and *Explore Belmont series*). The Friends of Maara Roa host a number of walks promoting the Cannons Creek side of Belmont Regional Park, as well as their restoration area. The Eastbourne Forest Rangers run the *Butterfly Creek Heritage Trail* and the Mainland Island Restoration Organisation (MIRO) runs the *Giant Rata Journey*. We link with individuals such as Robyn Smith for *Plant Life of the Park*, Tony Edwards for *Landforms in the Park*, George Gibbs and Helen Beaglehole for *Lighthouse and Lakes* and Graeme Jupp and the Fell Museum for *Rimutaka Rail Trail*.

9.7 Promotion

The programme has a budget of \$20,000, which is applied to advertising, other promotional materials and event supplies but does not include staff time. We will be promoting the programme through a four page lift-out in Elements, which is distributed in December to all households in the Wellington Region. A copy of this lift-out will be mailed to 1,300 people and organisations on our database. We also advertise on radio and all the events are listed on the GWRC web site. Public notices are commissioned in selected community newspapers at the beginning of January. The various territorial authorities are very supportive in promoting GWRC events specific to their area via their own publications. Press releases are developed prior to Christmas to launch the programme during early January. Should events not be booked up, further release often stimulates demand.

9.8 Sponsorship

In previous years we have sought cash sponsorship for the Regional Outdoors Programme, which has not been forthcoming. However, we have been successful in securing a grant from the Cancer Society towards new “pop-up” tents and sunscreen, and local retailer Dwrights Canvas has provided day-pack spot prizes for selected events over the last two summers and joined with us in purchasing new “flag signs” to better identify event locations for visitors. This summer Dwrights Canvas is sponsoring 23 events within the programme. At each of the sponsored events participants have a chance of winning a Karrimor backpack. Twenty percent off vouchers are also available for each participant. In addition, a tramping pack is available as a prize at the *Go Bush! Mountain Safety course* and a pup tent is to be given away at the conclusion of the *Explore Belmont series*.

Forestry

August to October 2007

Forestry

Review of operations for the period ended 9 November 2007

1. Plantation Forests

1.1 Log Harvest Contract

Both crews remained in Valley View through winter and early spring, and were able to produce good volumes through this period.

The market has proved relatively fickle, with an adverse reaction to the earlier export price spike resulting in falling prices on a monthly basis until October. These figures were as poor as have been seen over the past couple of years. Current projections anticipate a rapid recovery in November and December. These variations led to a number of producers moving firstly into export and latterly out of export in an endeavour to maintain returns. Although domestic prices have held with only minor reductions applying in October, supply and therefore demand has been erratic, with the traditional exporters chasing what they perceive to be the best dollar.

We took the decision to continue to serve our traditional domestic markets and only to divert loss making grades into and out of export.

Log 6 is based at Parry's Bush and Log 36 at Kilometre Paddock, both about 8.5 km from the Totara Park entrance.

Production for August was 6,371 tonnes for revenue of \$159,283, September 6,483 tonnes for \$147,557 and October 6,548 tonnes for \$113,402. Prices for export logs fell a further \$10 to \$20 in October on the back of a strengthening NZ dollar (0.6995 to 0.7573 USD and shipping plus \$US5).

Table 1 – Log 36 - Output by Grade – Kilometre- August 2007

Grade	Valley View 12.01 - Kilometre					
	August 2007		September 2007		October 2007	
	Tonnes	%	Tonnes	%	Tonnes	%
S Grade	1,128.87	38.98	962.14	27.75	1,007.47	28.42
L Grade	89.81	3.1	151.00	4.35	29.56	0.83
R Grade	497.45	17.18	481.39	13.88	492.08	13.88
K Sawlog	371.98	12.84	701.90	20.24	662.57	18.69
Roundwood	0	0	0	0	0	0
K Rough	397.96	13.74	553.93	15.98	734.38	20.72
Dom Rough	0	0	0	0	0	0
Pulp	410.21	14.16	617.09	17.8	618.89	17.46
O/S Pulp	0	0	0	0	0	0
Export pulp	0	0	0	0	0	0
Total	2,896		3,467		3,544	

Revenue for August totalled \$69,189 at an average of \$23.89 per tonne; September \$67,865 at an average of \$19.57 per tonne, and October \$46,178 at an average of \$13.03 per tonne.

Table 2 –Log 6 - Valley View - Output by Grade – Parry's Bush

Grade	Valley View 4.01 - Parry's Bush					
	August 2007		September 2007		October 2007	
	Tonnes	%	Tonnes	%	Tonnes	%
S Grade	1,143.58	34.08	962.14	27.75	896.29	29.84
L Grade	286.10	8.53	151.00	4.35	117.46	3.91
R Grade	482.97	14.39	481.39	13.88	591.44	19.69
K Sawlog	1,097.47	32.70	701.90	20.24	1,090.42	36.30
Roundwood	0	0	0	0	0	0
K Rough	59.82	1.78	553.93	15.98	0	0
Dom Rough	0	0	0	0	0	0
Pulp	286.01	8.52	617.09	17.80	307.90	10.25
O/S Pulp	0	0	0	0	0	0
Export pulp	0	0	0	0	0	0
Total	3,355		3,467		3,003	

Revenue for August was \$90,548 at an average of \$26.06 per tonne, September \$79,698 at an average of \$26.43 per tonne, and October \$67,223.22 at an average of \$22.38 per tonne.

Total revenue for August was \$159,283 at an average \$25.07 per tonne, September \$147,556.93 for 6,483.06 tonnes at an average of \$22.76 per tonne, and October \$113,401.99 for 6,548.46 tonnes at an average of \$17.32 per tonne.

1.2 Silviculture Contract

The Silvicultural Contractor has managed to employ some more employees and in the past three months has completed a further 22.5 hectares, including an additional 3.2 hectares that was outside the Contract. The Contractor now has a block of 4.4 hectares in Pakuratahi and 23 hectares of a 36 hectare block in Whakatikei to complete.

This season's planting began in mid-June and a total of 211,900 seedlings were planted.

1.3 Plantation Forestry Operations

We are still seeking a part time harvesting crew, preferably with a forwarder to assist the two present crews, even though so far this year they have been harvesting at an annual rate of 76,000 tonnes. With the Christmas close-down and the need to relocate back to Puketiro and Pakuratahi for the summer months, I do not believe that the current rate of harvesting can be sustained throughout the year.

We are currently awaiting a suitable weather window to release spray the blocks adjacent to the Information Centre at Valley View. These blocks are dominated by gorse and the spray will retard the gorse sufficiently to allow the pine to take over and later eliminate the gorse. This is the first time we have found it necessary to release spray since I took over the management of the forest in 1994.

All main roads in use by the logging trucks had “fine” spread and short road extensions were constructed at both harvest sites.

The only significant problem has been the access road into Log 36 at Kilometre. Despite the route following an existing road, it had failed to cope with the logging trucks. It has been necessary to remet at regular intervals and it is only now that it appears to be settling down. The ruts got so deep that the “combi” logging trucks were bottoming out.

We have approached adjacent landowner to the south of the MOT 73 block in Puketiro seeking permission to cross their land to access the block. If this is forthcoming, we will amend our current cutting plan by putting Log 36 straight into MOT after Christmas and have them move to Blowfly when it is completed.

1.4 Forest Access

Maungakotukutuku access remains the only significant problem, with the only access requiring two crossings of the Maungakotukutuku Stream between the end of the public road and our boundary.

1.5 Market Trends

The dollar continues to stifle any improvement in export prices and, when combined with shipping costs, generally lowers returns. Current predictions suggest improving return up to Christmas on export provided the dollar remains in the mid-70s. Our marketing contractor has fixed the majority of its shipping, which has sheltered us from the worst of the fluctuations. We can expect these costs to creep up over time. The improvement in cost and freight price (CFR) suggests that the previous oversupply in Korea has been eliminated.

2. Reserve Forests

2.1 Tauanui logging - output by grade

Grade	August 2007		September 2007		October 2007	
	Tonnes	%	Tonnes	%	Tonnes	%
S Grade	807.12	47.43	436.65	42.90	536.12	42.90
A Grade	261.95	15.39	237.76	23.36	332.25	23.36
F Grade	283.85	16.68	146.26	14.37	257.86	14.37
K Sawlog	0	0	24.32	2.390		
Pole	177.09	10.41	27.74	2.73	82.73	5.74
K Rough	0	0	0	0	0	0
Dom Rough	171.69	10.09	144.99	14.25	231.29	16.06
Total	1,701		1,017		1,440	

Revenue for August was \$46,822.66 at an average of \$27.68 per tonne, September \$26,045.05 at an average of \$25.76 per tonne, and October \$22,371 at an average of \$15.22 per tonne.

Production continues to be satisfactory, especially as the areas currently being harvested are among the steepest in the block and the Contractor is constructing their own access tracks as they go.

With the export markets depressed, all product - apart from one load - has been disposed of domestically. Had these domestic markets not been available, harvesting could not have continued without significant losses on the harvest. When future consideration is given to increasing the volumes out of the Wairarapa based forests, the issue of losses on export volumes will have to be a serious consideration. It may be preferable to tailor the harvest to the available domestic markets rather than pay the cartage to Centreport.

Transport from the site continues to be satisfactory, as would be expected through the winter months. Time will tell if it remains that way when the level of Wairarapa harvesting increases over summer.

2.2 Access

There have been no access issues over this period.

A decision in principle has been made to use a ford constructed from large concrete blocks as the access over the Tauanui River. Costings and the detail of construction are now being finalised, after which formal authority will be sought and the necessary resource consent sought. All being well, it is hoped to carry out the construction during the March low flow period.

2.3 Silviculture

Steady progress is being made through small and difficult second rotation stands in Hiwinui.

To date, 15.5 hectares of a targeted 82 hectares of pruning have been completed, along with 2 hectares of thinning (25 hectares targeted).

Logging slash and a high stocking of both native and radiata regeneration on steep slopes lead to low daily production levels and higher costs which are offset by small branching, excellent tree growth and small defect.

2.4 Rural fire

Periods of rain in the later part of winter and early spring have ensured that fire danger has remained at low to medium levels. As a result, wildfire activity has been limited. In saying that, on 29 October a significant fire on Department of Conservation land in the Waiohine Gorge carried through dead grass and old logging slash under a layer of very green looking grass.

A week of fire duty in the second week of October was notable for a high number of pager alarms from the Communications Centre as a result of the severe winds at the time.

Several severe weather warnings were received but, more significantly, a number of Rural Fire call-outs were to motor vehicle accidents, loose roof problems, downed power lines and fallen trees. Although none required additional resource deployment by the duty officer, each alarm requires an acknowledgement to the Communications Centre and recording in the Fire Log.

Water Supply

August to October 2007

Water Supply

Review of operations for the period ended 9 November 2007

1. Items of note

- Many hours of Water Supply management/administration team time have been devoted to two corporate management systems; i.e., asset management and health and safety.
- An overflow at Naenae Reservoir caused a minor environmental incident.
- We have completed some promising trial work for hydro power generation at Te Marua Pumping Station.
- We have had a new addition to the Wainuiomata/Waterloo team in the form of an electrical technician.

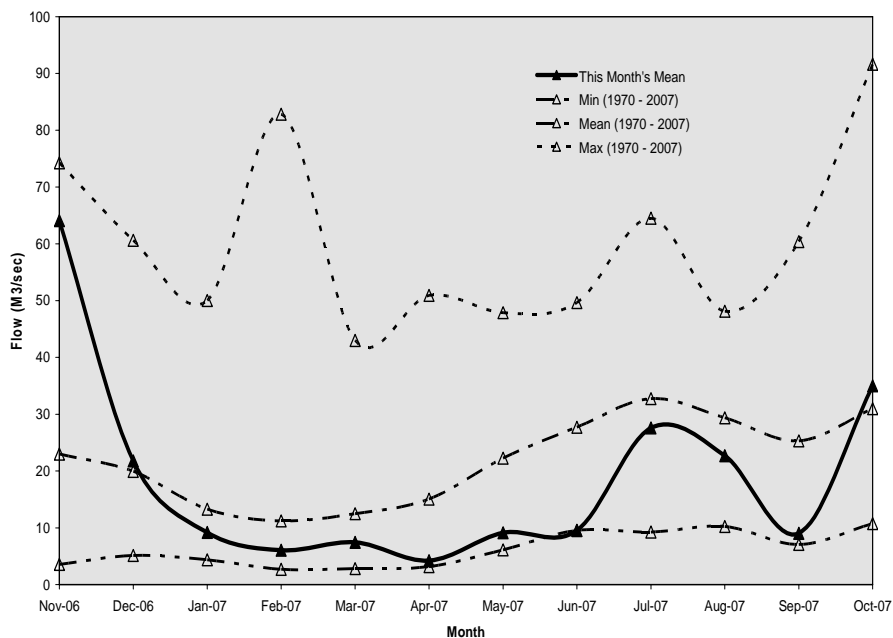
2. Supply situation

There were no supply issues for the period.

Hutt River flows

The mean flows for the Hutt River were:

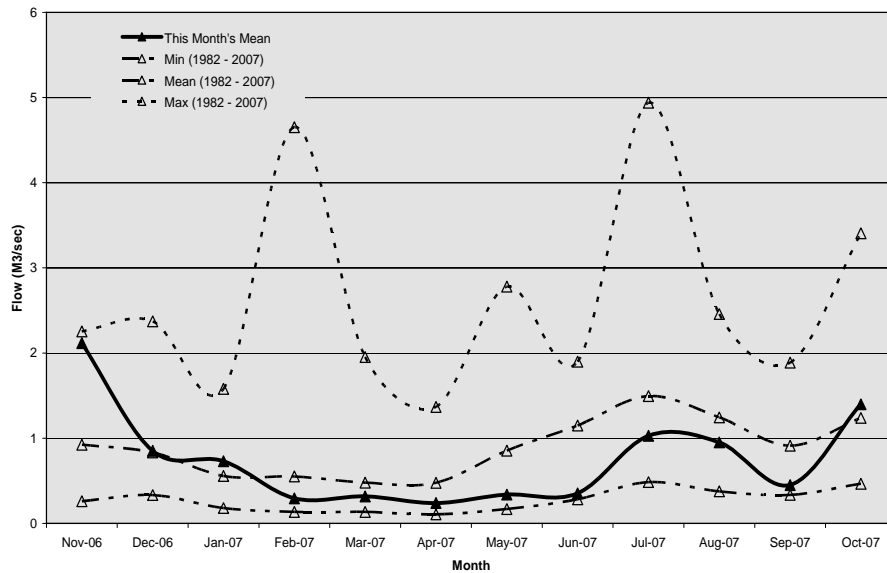
- August Below average
- September Close to the minimum
- October Above average



Wainuiomata River flows

The mean flows for the Hutt River were:

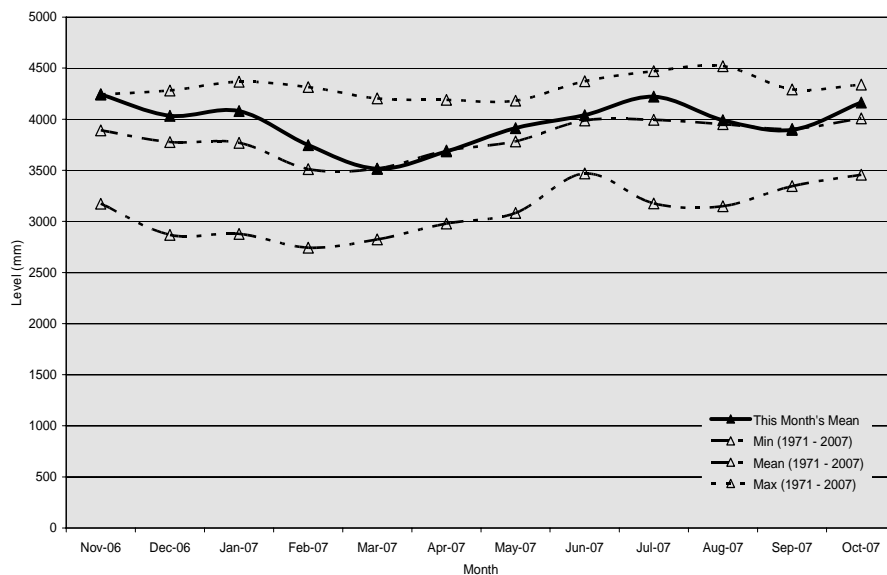
- August Below average
- September Close to the minimum
- October Above average



Aquifer levels

The water levels in the Waiwhetu aquifer during the period were:

- August Average
- September Average
- October Above average



3. Quality

- There were no Improvement Opportunity Forms (IOFs) or transgressions at Te Marua or Wainuiomata during the period.
- There was one IOF at Waterloo caused by a fluoride control glitch that was quickly fixed.
- There was one IOF for the distribution system when the fluoride at the Gear Island 1,050 mm pipeline sample point was low for a short time.

4. Health and safety

- There was one minor incident at Wainuiomata involving a contractor who slipped and fell between the floor grates and bruised their leg.
- There was one minor incident at Waterloo, where an employee cut their finger.
- At Te Marua there was a significant “near miss” incident. During investigations by staff members, contractors and a consultant into the possibility of using a 400 volt pump motor to generate electricity an electrical condition occurred, resulting in a cable insulation breakdown and short-circuit. The possibility of this occurrence had not been identified in the prior risk/hazard assessment. The nature of the possible injuries would have included electric shock and burns. The consultant has completed further research to confirm the cause of the incident and is confident measures taken will prevent any repeat of the condition
- There were four minor injuries in the pipelines team - a groin/lower stomach strain, a sore back, cut and burn to the right hand, and a bruised shoulder and strained back. None of these incidents resulted in lost time.

5. Environmental

- There was one transgression at Te Marua where the maximum instantaneous abstraction for Kaitoke was exceeded during plant start-up.
- There was an overflow at Naenae Reservoir during the refilling of the Gracefield Reservoir after maintenance work. The overflow caused some scouring of the watercourse and discolouration in the Waiwhetu Stream. As a result we are working with our customers to check all reservoirs for the consequences of an overflow.

6. Operations and maintenance

6.1 General operations

- The maintenance work on the Wainuiomata centrifuge was completed and the machine reinstalled.

- The gearbox and actuator on the George Creek control valve were repaired.
- A Wainuiomata fluoride dosing pump impellor shaft sheared and the pump had to be replaced.
- The six monthly service on the Wellington pump variable speed drives was completed by Vectek.
- Various pipeline maintenance works were completed during the period, including:
 - Removing the Elizabeth Street 375 mm valve and blanking the top because of development in the area.
 - A new 600 mm butterfly valve was installed at the Wainuiomata valve house and the concrete lining repaired inside the 750 mm main
 - The pipeline was reinstated at Maldive No. 2 Reservoir after washouts occurred.
 - Bollards and concrete blocks were installed to protect the pipeline at the Wainuiomata No. 1 Pumping Station.
 - The Kingsley branch line was shut down, so that the control valve from the reservoir roof could be removed and new pipework installed.
 - New pipework was fabricated for the scour on Hutt Park Road and a new valve, non-return valve and valve chamber installed.
 - A faulty control valve was removed from the Porirua Low Level branch line.
 - Scour valve exercising was carried out on the Hutt north, Hutt south and Wainuiomata west pipelines.

6.2 Pipeline leaks

- There were seven leaks during the period, as detailed below:
 - The 1,050 mm main at Randwick had to be shut down so that a 1 m section of pipe and two couplings could be cut in to repair a leak.
 - The leaking cross connection at Bell and Parkside Roads was repaired.
 - The 900 mm main at Haywards and Trentham was shut down to repair a leaking bypass valve at Silverstream. The valve was renewed.
 - A leaking scour valve on the branch line to Moores Valley Reservoir was repaired.
 - The Knights Road collector main was shut down and a leaking 900 mm coupling on the inlet to the Waterloo plant was repaired.
 - The Porirua low level branch line at Warspite Avenue was shut down to enable welding repairs to be carried out on a leaking joint.

- At Thorndon Pumping Station work began to try and locate the leak by excavating and removing the existing anchor block around the OK main.

6.3 Plant tours

- Te Marua Water Treatment Plant - 8 tours
 - 1 August Whareama School (40 people)
 - 2 August Weltec (15 people)
 - 8 August Greater Wellington Regional Council (GWRC) induction (12 people)
 - 15 August Opus Environmental Training (15 people)
 - 17 August Massey Environmental Health (12 people)
 - 5 September Weltec (14 people)
 - 19 September GWRC induction (14 people)
 - 25 September Opus Environmental Training (11 people)
- Waterloo Water Treatment Plant - 1 tour
 - 19 September Weltec (15 people)

7. Projects

- The upgrade of the Wainuiomata rapid mix chambers was completed.
- The Wainuiomata gatehouse valve was replaced and the main downstream was resurfaced.
- Research and investigations into dual stream operation at Waterloo were completed during the period, and work began on the dual stream control valve project.
- Work began on the pump performance testing at Waterloo. Initial observations are that some of the pump efficiencies are lower than expected and there may be some cavitation damage on at least one of the Wellington pumps.
- The quality monitoring phase of the Stuart Macaskill Lakes management review is complete and a draft report has been issued.
- Trials to generate electricity by using existing spare pumps at Te Marua Pumping Station are complete. The work required for a permanent installation is being costed.
- The strengthening work on the Gracefield Reservoir by Hutt City Council was completed and the reservoir brought back on-line at full capacity.

- A new electromagnetic flow meter was installed for the Thorndon zone.
- An actuator tower, actuator and submersible pump were installed for the Silverstream actuator project. The valve chamber lid was put back on and the area reinstated.
- Work continued on the Pukerua Bay emergency supply project, with the inlet main to the Porirua outlet main being excavated. The new pipework was fabricated and installed from the new branch valve up to the outlet valve. The anchor blocks were poured and the new pipework was tested, flushed and finally backfilled.
- A 900 mm diameter valve and inlet main were excavated for the Waterloo dual stream project. Concrete was poured for the valve chamber. Excavated was carried out and two 100 mm ducts installed. The building of the valve chamber was completed, the new aluminium lid was fabricated and installed, and the area was finally backfilled and reinstated.
- The Pinehaven branch and bypass valves were renewed and a new 1,200 mm valve chamber installed over them as part of the valve replacements project.
- Fabrication began on the pipework for the new air valves in the Wainuiomata Tunnel, Dicks Hill and Richard Prouse Park. Permits and service locations were organised.
- All the pipework for the Wainuiomata emergency supply project has been fabricated but is yet to be installed.

Water Supply and Forestry Health and Safety Data from July 2006 - Total Injuries

	Jul	Aug	Sep	Oct	Nov	Dec	Jan	Feb	Mar	Apr	May	Jun	
PRODUCTION (+ 4 OPS ADMIN)													
Hours worked	2675	3716	2386	2201									Aug - Cut hand on broken glass and cut hand on bolt
Employee numbers	16	16	16	17									
Incidents	0	0	0	0									
Days lost	0	0	0	0									
Incidence rate (number of incidents per 100 workers)	0	0	0	0									
Frequency rate (incidents per 10,000 hours exposure)	0	0	0	0									
Severity rate (days lost to injury per 10,000 hours worked)	0	0	0	0									
DISTRIBUTION													
Hours worked	1770	2748	1421	1634									Jul - Sprained arm
Employee numbers	9	11	12	12									Aug - Cuts on both hands and small pieces of concrete in ear
Incidents	1	2	2	2									Sep - Sore back, cut and burnt hand, and groin/lower stomach strain
Days lost	0	0	0	0									Oct - Strained back and bruised shoulder
Incidence rate (number of incidents per 100 workers)	11	18	17	17									
Frequency rate (incidents per 10,000 hours exposure)	6	7	14	12									
Severity rate (days lost to injury per 10,000 hours worked)	0	0	0	0									
ENGINEERING CONSULTANCY													
Hours worked	1396	1741	1151	1116									
Employee numbers	9	12	9	8									
Incidents	0	0	0	0									
Days lost	0	0	0	0									
Incidence rate (number of incidents per 100 workers)	0	0	0	0									
Frequency rate (incidents per 10,000 hours exposure)	0	0	0	0									
Severity rate (days lost to injury per 10,000 hours worked)	0	0	0	0									
SUPPORT													
Hours worked	992	1572	1003	1007									
Employee numbers	7	7	7	7									
Incidents	0	0	0	0									
Days lost	0	0	0	0									
Incidence rate (number of incidents per 100 workers)	0	0	0	0									
Frequency rate (incidents per 10,000 hours exposure)	0	0	0	0									
Severity rate (days lost to injury per 10,000 hours worked)	0	0	0	0									

Deleted: 8

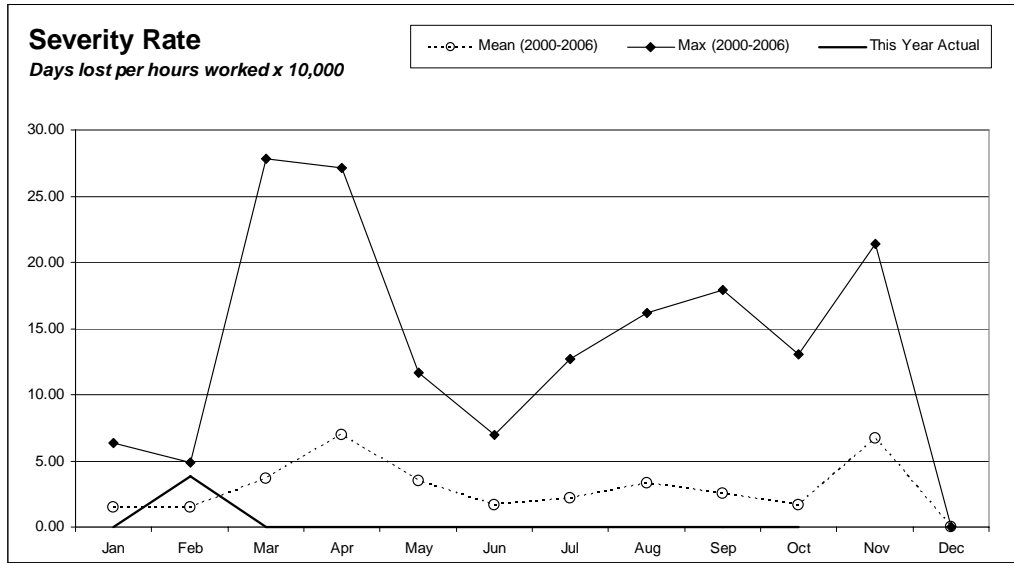
Deleted: 26

<u>LABORATORY</u>	<u>Jul</u>	<u>Aug</u>	<u>Sep</u>	<u>Oct</u>	<u>Nov0</u>	<u>Dec</u>	<u>Jan</u>	<u>Feb</u>	<u>Mar</u>	<u>Apr</u>	<u>May</u>	<u>Jun</u>	
Hours worked	306	48											
Employee numbers	1	1											
Incidents	0	0											
Days lost	0	0											
Incidence rate (number of incidents per 100 workers)	0	0											
Frequency rate (incidents per 10,000 hours exposure)	0	0											
Severity rate (days lost to injury per 10,000 hours worked)	0	0											
<u>STRATEGY AND ASSET</u>	<u>Jul</u>	<u>Aug</u>	<u>Sep</u>	<u>Oct</u>	<u>Nov</u>	<u>Dec</u>	<u>Jan</u>	<u>Feb</u>	<u>Mar</u>	<u>Apr</u>	<u>May</u>	<u>Jun</u>	
Hours worked	716	984	604	712									
Employee numbers	5	5	6	6									
Incidents	0	0	0	0									
Days lost	0	0	0	0									
Incidence rate (number of incidents per 100 workers)	0	0	0	0									
Frequency rate (incidents per 10,000 hours exposure)	0	0	0	0									
Severity rate (days lost to injury per 10,000 hours worked)	0	0	0	0									
<u>FORESTRY</u>	<u>Jul</u>	<u>Aug</u>	<u>Sep</u>	<u>Oct</u>	<u>Nov</u>	<u>Dec</u>	<u>Jan</u>	<u>Feb</u>	<u>Mar</u>	<u>Apr</u>	<u>May</u>	<u>Jun</u>	<u>Jul - Motor vehicle accident</u>
Hours worked	324	630	413	352									
Employee numbers	3	3	3	3									
Incidents	1	0	0	0									
Days lost	0	0	0	0									
Incidence rate (number of incidents per 100 workers)	33	0	0	0									
Frequency rate (incidents per 10,000 hours exposure)	31	0	0	0									
Severity rate (days lost to injury per 10,000 hours worked)	0	0	0	0									

<u>Water Supply and Forestry Combined</u>	<u>Jul</u>	<u>Aug</u>	<u>Sep</u>	<u>Oct</u>	<u>Nov</u>	<u>Dec</u>	<u>Jan</u>	<u>Feb</u>	<u>Mar</u>	<u>Apr</u>	<u>May</u>	<u>Jun</u>
Hours worked	8178	11437	6977	7022								
Employee numbers	53	55	53	54								
Injuries	2	4	2	2								
Days lost	0	0	0	0								
Frequency rate (incidents per 10,000 hours exposure)	2	2	3	3								
Severity rate (days lost to injury per 10,000 hours worked)	0	0	0	0								

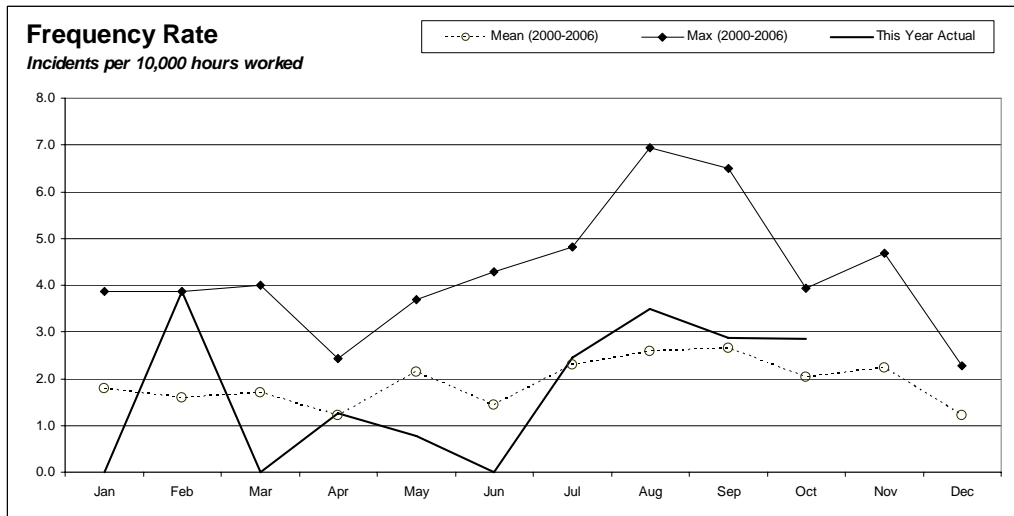
Incidence rate = (number of incidents/number of employees) x 100
Frequency rate = (number of incidents/person hours worked) x 10,000
Severity rate = (days lost/person hours worked) x 10,000

Deleted: 9



Incidents

August 2007	4
September 2007	2
October 2007	2



Lost days

0

Engineering Services

August to October 2007

Engineering Services

Review of operations for the period ended 9 November 2007

1. Asset management

- Key projects and their status are as follows:
 - Work is proceeding on the installation of a new control system at the Te Marua Water Treatment Plant. The existing control system is almost 20 years old and is no longer supported by the manufacturers.
 - Planning has begun for a new on-site chlorine production facility at Te Marua Water Treatment Plant. This facility will reduce chlorine costs and our reliance on the single supplier of chlorine gas. A liquid form of chlorine will be produced from salt.
 - Work has begun on developing stage 2 of the system optimiser. This is an intelligent electronic scheduling and operating system that selects the most economic water supply and pumping regime to meet consumer demand. This project upgrades the existing system operating on the Waterloo/Wainuiomata supply and extends it to cover the complete wholesale water supply network.
 - The inlet pipework at Waterloo Water Treatment Plant is being upgraded to allow two streams of water to be treated simultaneously. The work is almost completed. This change will improve the performance of recently installed aerators and further reduce the quantity of lime needed to treat the water.
 - Installation of the effluent pipe from the Wainuiomata Water Treatment Plant centrifuge to the Wainuiomata sewer in Hine Road has been completed and will be put into service following installation of a flow meter and programming of the control system.
 - Arrangements have been made to install instruments into the three sentinel wells recently installed on The Esplanade in Petone. The instrumentation will monitor the water level in the Waiwhetu aquifer and its conductivity as a check for possible saltwater intrusion.
 - Inlet standpipes are to be installed in the Pukerua Bay, Linden and Aro Reservoirs to protect against water loss in the event of reservoir or supply pipe failure. The first modification will be to the Pukerua Bay Reservoir, which is programmed for February 2008.
 - A bypass pipeline is currently being installed at the Pukerua Bay Reservoir. This will provide an emergency water supply to Pukerua Bay in the event of reservoir failure. It will also facilitate installation of the inlet standpipe and any future reservoir maintenance.
 - Filter to waste pipework has been installed at Wainuiomata Water Treatment Plant and will soon be commissioned. This work allows the water from a single filter to be run to waste if it does not meet the Drinking-Water Standards (rather than from all filters as the current practice).

- Randwick Pumping Station has been decommissioned. Pipework has been modified and a new access installed into the Randwick valve chamber. A new power supply is being arranged, which will allow the control building to be demolished after UnitedNetworks has relocated their switchgear and transformer from the building.
- The Silverstream line valve actuator has been installed and is ready for commissioning. The actuator will automatically close off the Kaitoke pipeline and prevent water loss if the pipeline ruptures in seismic activity.
- The replacement Kelburn pumps have been inspected by KSB Ajax Pumps and dispatched from Auckland to Wellington for installation into the new Karori Pumping Station. We have some concern over manufacturing tolerances but await results after installation. The existing Karori Pumping Station cannot be decommissioned until the new pumpsets have been satisfactorily commissioned. The Karori Wildlife Sanctuary Trust is concerned that further delays will impact on their car park upgrade project.
- A cross connection is to be installed between the Wainuiomata/Thorndon water main and Hutt City Council reticulation system, near the Wainuiomata shopping centre. This will provide an emergency supply if the Wainuiomata Reservoir is out of action. A second cross connection is being planned in Gracefield.
- A report has been prepared identifying various ways of enhancing the reliability of the water supply to Karori, a large suburb with only one supply point.
- Seismic mitigation work is to be carried out at the Te Marua Water Treatment Plant. The work will include the installation of valved and blanked off tee connections on the Kaitoke/Karori pipe each side of the Wellington Fault. This will allow faster resumption of the water supply (although at reduced capacity) following a major movement of the Wellington Fault.

2. New water sources

- Initial investigation of the Upper Hutt aquifer is now complete. Aquifer modelling has been carried out based on the results obtained from the two 300 m diameter exploration wells and other bore information in the immediate area. This indicates that a sustainable yield of 16 to 24 MLD could be expected over a 90 day period. The Consultant's report is due at the end of November.
- Investigations and discussions are continuing with stakeholders on how best to evaluate the low flow requirements in the Hutt River, with a view to reducing the minimum residual flow at Kaitoke to allow more water to be abstracted in low flow conditions. Fish passage surveys in the upper reaches of the river have been completed, a preliminary assessment of algae issues made, and a survey of macro invertebrates conducted. Possible changes to the *Regional Freshwater Plan* are being investigated

to facilitate the taking of more water, whilst providing greater assurance that ecological values will be safeguarded, particularly downstream of Birchville.

3. Quality assurance

- Our records indicate that compliance with the new *Drinking-Water Standards for New Zealand 2005* is being achieved at all four water treatment plants.
- An “a1” grading (the highest available) has been awarded to the wholesale water distribution system. Information for the grading of the Gear Island Water Treatment Plant is being collected. It is expected that the previous B grading can be lifted to A1. Formal certification of the B grade awarded to Waterloo Water Treatment Plant is still awaited.
- An external audit of our quality assurance and environmental management systems by BVQI is programmed for November.
- The *Health (Drinking Water) Amendment Act* has been passed into law. The new law requires that all practicable steps are taken to comply with the Drinking-Water Standards (our current practice). We will be required to prepare Public Health Risk Management Plans for the wholesale water supply by July 2009.

4. Environmental

- The water outlet from the Wainuiomata Lower Dam was closed in early November to allow a wetland to form behind the dam. Closure of the dam outlet was delayed by the trout spawning season. The operation proceeded without any problem and the wetland has now been formed, with the reduced height spillway operating normally.
- Design is under way for the installation of power factor correction equipment at the Waterloo Water Treatment Plant to improve the efficiency of power use.
- Planning is under way for equipment to increase the solids content of waste lime resulting from the Wainuiomata water treatment process and, therefore, reduce the volume of lime disposed.
- The Environmental Monitoring and Investigations Department will carry out saline monitoring at the new sentinel wells at the Petone foreshore to reduce the risk of contamination of the Waiwhetu aquifer.

5. Catchment management

- The report on the cull carried out in July has been received. Ten pigs and four deer were eliminated.

- A goat sweep was held in September, with 33 goats 18 pigs and 3 deer being culled. Given the July results, it is clear that these animals are migrating into the area from the adjoining land. On this basis professional culling will be an ongoing requirement.
- There were a number of wind-throws that obstructed access during this period. All were cleared by the ranger and water treatment plant staff members.
- The first of the new season tours was held on 14 October. Forty-five participants took part and enjoyed a good day in pleasant weather.
- The first of the strengthened gates was erected in the boundary fence. Hopefully this will dissuade potential trespassers from trying to drive through the locked gate.
- There were the usual spates of vandalism and trespass.

Renewable Energy

August to October 2007

Renewable Energy Review of operations for the period ended 9 November 2007

1. Puketiro

The various consultants engaged by RES New Zealand Ltd (RES) are continuing to obtain information to support the project refinement process and eventual resource consent applications. RES had indicated earlier they expected to apply for resource consents in February 2008 but this has been revised to the first half of 2008.

RES has now held two open days at a venue in Whitby where they had met with members of the public and explained the proposal based on the information obtained so far. Other elements of their consultation effort have included locally distributed newsletters, a project website and a steady number of ad hoc meetings and responses to public and media enquiry. Key elements still to be resolved include the preferred location of the wind turbines and the preferred access route to the site. Until this information is available it is not proposed to carry out the further round of consultation on the Battle Hill Regional Farm Forest Park.

There are a number of rural properties that are either farmhouses or rural lifestyle houses in Paekakariki Hill Road, Moonshine Road, Flightys Road and Bulls Run Road. RES has indicated to us that they have visited the residences within a 2 km radius and in many cases have spoken to the owner. Where the owner has not been home, they have taken a GPS location of the house to assist in their visual and acoustic analysis.

As part of the consultation, RES is also engaged with a number of community groups, resident associations and iwi. To make the dissemination of information more consistent and manageable, they are seeking to establish an overall wind farm liaison group, which would include representatives from key stakeholders identified so far.

Wind information has been obtained from the site for over six months and RES is encouraged by the wind speed results but requires further monitoring information to determine the effect of wind turbulence.

GWRC has received several official information requests regarding the wind farm and all of these have been responded to within the statutory time frame.

2. Stoney Creek

Negotiations over the Stoney Creek wind farm site in the Wairarapa have proceeded very slowly. A separate report recommends giving preferred Tenderer status to a company. The objective then is to finalise the Contract for approval by the time of the next Committee meeting in February 2008.