
Parks, Forests and Utilities

November 2007 to January 2008

Parks

November 2007 to January 2008

Parks

Review of operations for the period ended 31 January 2008

1. **Manager's comments**

1.1 **Battle Hill Farm Forest Park Management Plan**

Attachment 1 to this report is the legal advice from DLA Phillips Fox regarding the process followed by this Council in its review of the Battle Hill Farm Forest Park Management Plan in response to concerns raised by Councillors at the 19 September 2007 Landcare Committee meeting.

In summary, DLA Phillips Fox is comfortable that the process followed by the Council complies with the Local Government Act 1974. However, questions whether amendments made regarding the Puketiro Wind Farm Development made after consultation were within the scope of amendments that councils could reasonably and fairly make. However, the fact that Council has resolved to go out for another round of consultation on the draft will rectify that issue.

1.2 **Visitation in Parks up because of fine weather**

The weather this spring and summer has been marvellous for those members of the public wanting to enjoy the regional parks and forest areas. Indications from rangers suggest that visitor numbers this summer far outweigh those from previous years. Visitor counts have confirmed that numbers are well up, conservatively by around 30 percent.

1.3 **Fine weather brings problems**

Of course the demand and the fine weather have created their own issues.

Park rangers have been assisting the territorial authorities and Regional Public Health to manage the algal bloom problem in the Hutt and Wainuiomata Rivers.

As has been the trend over the last few years, managing alcohol-fuelled disorderly behaviour in the parks over the New Year period requires a lot of officers' time and effort. Kaitoke in particular had become a trouble spot. This year we implemented a much stricter management of alcohol and disorderly behaviour and I must say this culminated in a much more enjoyable New Year period for both campers, especially family groups, and staff. We did however experience some problems at the campground at Battle Hill and will look to manage this more strictly next year.

1.4 **Forests safe for dogs after 1080 operation**

Akatarawa and Pakuratahi Forests are now safe for dogs following the September 1080 operations.

1.5 **Track counters installed in East Harbour Regional Park**

Six new track counters were installed at East Harbour Regional Park in late

November and became operational at the end of January. Track counters have never been used at the park before. With the track counters in place, we can now start to assess visitation numbers and usage. This will assist us in making management decisions in the future and will be used in conjunction with visitor satisfaction surveys.

2. Environmental planning and implementation

2.1 Policy and planning

Officers are continuing to work on the Concessions Policy and Bylaws Reviews. A paper on the Concessions Policy was taken to the Ara Tahī Committee on 5 December 2007, following the October workshop. Feedback from Councillors on both reviews will be sought in March.

2.2 Assets

Engineering inspections of all foot and vehicle bridges have been completed at Battle Hill and Queen Elizabeth Park.

Most structures are in good condition but posting weight and speed limits has been recommended on some vehicle bridges, and some upgrade work is also needed on a farm bridge at Queen Elizabeth Park.

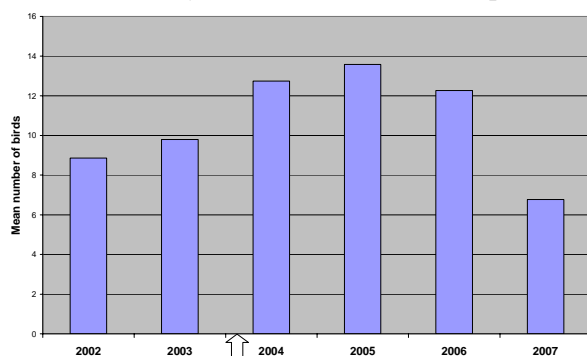
2.1 Pest control

2.1.1 Pest plants

The weed team has been continuing to control climbing asparagus in East Harbour Regional Park but have also been completing a thorough search for pest plants in the Wainuiomata Recreation Area. They have found some new infestations of old man's beard and Japanese honeysuckle, which they have now controlled. A contractor has recently sprayed the tradescantia in the Wainuiomata Recreation Area.

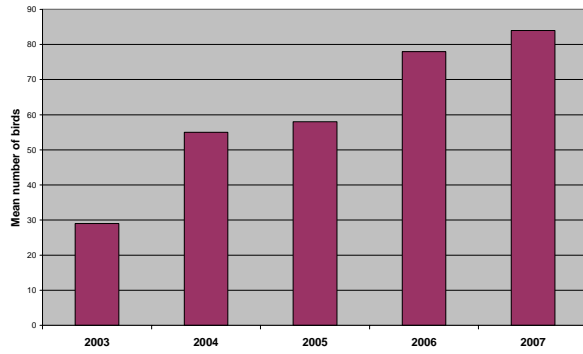
2.1.2 Monitoring

Results from the bird monitoring data collected on GWRC land show a varied response, depending on how recently the last pest control operation occurred. In the Hutt Catchment bird numbers have fallen. This is probably because it is now over four years since the last 1080 operation in the area. The large arrow



Bird counts in the Hutt Water Collection Area

shows when the last possum operation occurred (August 2003). In Kaitoke Regional Park kereru numbers are continuing to increase.



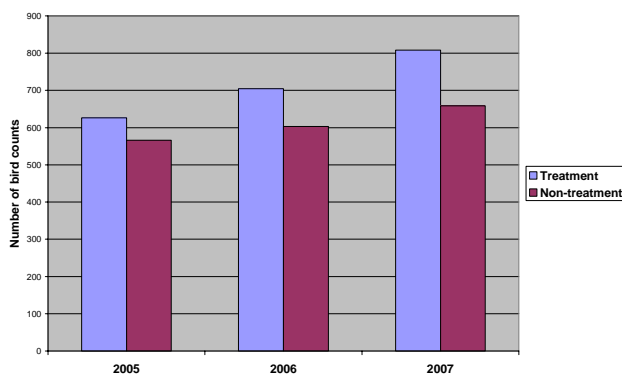
Kereru counts in Kaitoke Regional Park

Also in Kaitoke Regional Park health of the rare red flowered mistletoe (a threatened species) was recently assessed and found to be growing well. Tui have been seen feeding on the nectar of this mistletoe. A new finding of mistletoe in the Eastern Hutt Catchment.



2.1.4 Wainuiomata Mainland Island

Mainland Island bird counts were completed in November. It is pleasing to see that there has been an increase in bird numbers over time since the Mainland Island began in 2005.



Wainuiomata Mainland Island bird counts

The November rodent tracking monitor showed rats to be at 98 percent outside the Mainland Island and 7 percent inside. One mustelid was recorded in the tracking tunnels in the non-treatment area. Rat numbers have fallen inside the Mainland Island site since the last monitor.

A multi-species hunt in the Mainland Island site was completed by professional hunters over 40 hunter days in December. Nineteen pigs, 4 goats and 2 deer were culled.

3. Western sector

3.1 General

The warm weather continues and, aside from a few dumps of reasonable rain, things remain fairly dry on the western side. As farming makes up a significant proportion of our park areas in the Sector, both officers and farm leaseholders are eagerly awaiting a bit more rain to keep the grass growing.

Park user numbers of course picked up over the last couple of months. Camping at Battle Hill was particularly popular.

On the Hutt River the Ranger has been dealing with the eruption of toxic algae and the associated eruption of warning signs that have been required to be placed alongside affected areas.

3.2 Belmont Regional Park

3.2.1 Events held

A 21 km half marathon event was held on the southern end of the park early in December.

A total of six Regional Outdoor Programme events have been completed on the park so far this summer. There has been a new focus in 2008 to promote the varied opportunities provided by the different entrances to the park.

A New Zealand Territorial Force exercise was held on Waitangirua Farm in late January.

3.2.2 Ranging

The Ranger has continued discussions with Landcorp regarding Waitangirua Farm fence maintenance and replacement, and weed control operations. Unpredictable wind conditions throughout December and January made helicopter gorse spraying difficult to complete.

3.2.3 Maintenance

Fencing upgrade operations have been making progress on Waitangirua Farm. A contractor has completed a boundary fence re-alignment/upgrade between the Kilmister block and the Belmont Pony Club area at Hill Road.

Various other high priority fence maintenance jobs throughout the farm have also been completed.

3.3 Battle Hill Farm Forest Park

3.3.1 Events held

It has been an extremely busy period at Battle Hill.

The Regional Outdoors Programme started in January at Battle Hill, with a heli-tramp, which consists of a short four minute flight north, landing on a grassy ridge, then a three hour walk back to Battle Hill.

As the park increases its visitor numbers through events such as the Regional Outdoors Programme, horse eventing and school visits, the facilities that were adequate 10 years ago are failing to meet demand during high usage months.

3.3.2 Ranging

The ranger has been very busy dealing with campers, horse event organisers and visitors over this period, as well as dealing with queries and contractors working on the airstrip and Transmission Gully.

3.3.3 Maintenance

The swimming hole in the campground has had a clean out, with 35 m³ of rock being removed. It is a very popular spot for both campers and picnickers over the summer months.



Campers over the Christmas/ New Year period

3.4 Queen Elizabeth Park

3.4.1 Events held

Rangers have assisted with events held over the period. Particularly popular was the Anything Vintage Festival held over three days in January.

The photos on page 8 indicate the variety of activities going on.



Anything Vintage Festival activities

3.3.2 Ranging

This has been a hot and dry period, which has drawn people down to the beach at Queen Elizabeth Park.



Staff members have been working with volunteers in the plant nursery and volunteers have also been helping construct trap boxes which will be used in the park for mustelid control.

3.4.3 Maintenance



Staff members have been busy maintaining tracks, cutting back vegetation, and installing signs throughout the park. We are trialling a new “mega” pole marker indicating access for the public access points and discourage walking over sensitive beach dunes.

4. Eastern sector

4.1 General

Numbers of people using Kaitoke Regional Park are up dramatically from this time last year and camping at the park continues to be extremely popular (around 500 people over New Year and 600 people over Wellington Anniversary weekend.) The other parks are also experiencing similar demand.

A much stricter management of alcohol consumption at Kaitoke Regional Park on New Year's Eve worked a treat, with twice as many campers as last year (mostly because of the weather), many of them families, enjoying themselves.

Once again the summer Regional Outdoors Programme is popular, with more than 300 people attending events such as Kev the Kiwi and Paws in the Park, and other events being booked out.

4.2 Kaitoke Regional Park

4.2.1 Events held

Two days of filming in the park took place in early December for "Time Hackers", and five days took place during January with a group from the New Zealand Film Commission *The Witch and the Woodsman*. A further day's filming took place late January for Ffermio.

A group of 12 members of the Botanical Society held a working bee during November, conducting environmental work. Other events included two school group tours, Army cadet training and a canoe club event.

Regional Outdoors events included two Beginners Guides to the Rain Forest, which both had 40 attendees; the Nature Discovery Treasure Hunt with around 170 attendees; the Ridge Track Adventure which had 35 participants and Kev the Wandering Kiwi saw 150 participants (mostly children).

4.2.2 Ranging

The ranging team has been busy, mostly with camp management. The addition of a Summer Ranger has been beneficial in sharing the demanding workload.

Wellington Anniversary weekend was one of the busiest in recent memory, with park infrastructure and parking areas at full capacity. The swimming holes were particularly busy because of the still, hot days.



Park visitors enjoy swimming and kayaking

4.2.3 Maintenance

Minor maintenance work was carried out during the period.

4.3 East Harbour Regional Park

4.3.1 Lakes block circuit

The construction of a 115 m boardwalk over the Gollans Stream wetland above Lake Kohangatera now completes a circuit around the entire Lakes Block. This gives the public the opportunity to visit the wetlands of both lakes without having to backtrack on their route.



Gollans wetland boardwalk

4.3.2 Events held

A community group “get together” and “thank you” barbecue was held in conjunction with the Mainland Island Restoration Organisation (MIRO) for all volunteer possum trappers and nursery workers. These volunteers also include Lower Hutt Forest and Bird members who primarily work at the MIRO nursery.

In early December our Ranger gave a talk on *East Harbour Regional Park Visits and Short Walks* to the Wellington Bed and Breakfast Association. The presentation was well received and informative.

The Regional Outdoors Programme has involved several events in East Harbour.

Sightings of birdlife have included tomtit (not usually seen in East Harbour Regional Park), New Zealand falcon, whitehead, kakariki at Gollans headwaters and several morepork nest sites.

Several school groups have used the park for organised tramps, taking advantage of the fine weather prior to Christmas.

Applications for the East Harbour hunting ballot have been advertised and are available until close-off on 18 February.

4.3.3 Ngaumatu Track upgrade

This project has now been completed and is proving to be a very popular asset. The track is being utilised by a range of people from walkers and runners to mothers taking their kids to the local kindergarten.

Although of low altitude, the track passes through some distinct forest types over a relatively short distance. At the lower end of the track there are remnants of the original coastal swamp forest, whereas above this beech forest with old rata trees dominating.

4.3.4 Ranging

An unauthorised film crew was sighted filming at Pencarrow Lighthouse

during December and told to leave the site. They later applied for and received a concession, paid their fees and were able to complete their filming.

4.3.5 Maintenance

General summer maintenance on tracks and other assets continues, including water table maintenance and vegetation cutbacks on Kowhai Street, Bus Barn, Mackenzie Road, Howard Road, Rata Ridge and Zig Zag (Fraser Street) tracks. These are now looking good and visitors should have no problems navigating our tracks and the grass areas are in top condition.

4.4 Wainuiomata/Orongorongo Catchments

4.4.1 Events held

A “thank you” barbecue and train ride was held for volunteer guides who provide invaluable assistance to rangers on the Wainuiomata Catchment and Orongorongo walks. All walks to date this season have been fully attended. During this period three catchment walking tours and two Orongorongo tours have been held, all with excellent feedback.



Kev the Wandering Kiwi paid a visit on 17 January and, with the benefit of a gloriously sunny day, we had an excellent turnout of approximately 300 members of the public.



Kev the Wandering Kiwi visits Wainuiomata recreation area

Applications for the Wainuiomata/Orongorongo Hunting Ballot have been advertised and are available until close off on 18 February.

4.4.2 Ranging

Oncoming summer weather and school study leave periods saw an increase in vandalism during November. Most of the signs in the lower recreation area were tagged and fence rails and bollards were removed or rammed. Several cars had to be removed from the alternate pool area and large amounts of rubbish required clearing twice daily.

4.4.3 Maintenance

The Orongorongo access track is in excellent condition at present, following 15 km of hydro-mowing, grading and clearing of the water tables.



With the Lower Dam now full, work has commenced on tidy up and the upgrade of the surrounding area. Where required, topsoil was placed and seeded. A small viewing area of the lower spillway was cleared.

A new sign has been installed at the front information kiosk, in conjunction with the Rimutaka Forest Park Trust kiwi programme. The kiwi release site is situated on DoC land adjacent to the recreation area. The sign has a map and information attached regarding the kiwi programme.



4.5 Akatarawa/Pakuratahi Forests

4.5.3 Events held

The Rimutaka Incline Fun Run was very successful during November and attracted approximately 700 participants - a vast increase in attendance over previous years. Good weather was a major contributor to this increase.

Track conditions for the event were very good and excellent feedback has been received from participants.

The Kapi Mana motorcycle event prior to Christmas went well, with no problems. This event involved 100 motorcycles.

Other events during this period included one fire training exercise, five Army training exercises, six 4WD events and one driver training exercise.

Regional Outdoors Programme events have commenced and Kev the Wandering Kiwi and Lion Foundation Buggy Walk on 10 January in Tunnel Gully was another successful day. This was followed by Paws in the Park on 20 January, another well attended event.

4.5.2 Ranging

During the month prior to Christmas we experienced several incidences of vandalism within the Tunnel Gully reserve.

4.5.3 Maintenance

We continue to maintain the waterways and have been paying specific attention to the Rimutaka Incline walkway.

Pest control continues in all areas with the Ranger shooting seven goats in the Rimutaka Incline walkway area, while smaller vermin are dealt with in the recreational areas as required.

Marketing and Design

November 2007 to January 2008

Marketing and Design

Review of operations for the period ended 31 January 2008

1. Manager's comments

We are fast approaching the completion of a significant piece of work - the assembly of information for the "demand management" side of the Wellington Water Management Plan. This includes the findings from the public opinion research, together with the Technical Report and peer review, metering report, and other information. It will be important background information as we move into a programme of public consultation in mid-2008.

Once again the Regional Outdoors Programme is proving extremely popular with residents from around the Region. It is also delivering great value to park volunteer groups, clubs and leaseholders involved by promoting their work, recruiting members and increasing patronage.

More details of the work programmes follow, including the January period.

Formatted: Font color: Auto

Formatted: Font color: Auto

Formatted: Indent: Left: 0 cm, Hanging: 1.6 cm, Right: -0.07 cm, No widow/orphan control, Tabs: 1.6 cm, Left + 2.23 cm, Left + 2.87 cm, Left

Formatted: Font color: Auto

Formatted: Font color: Auto

Formatted: Font color: Auto

Formatted: Font color: Auto

Formatted: Font color: Auto

Formatted: Font color: Auto

Formatted: Font color: Auto

Formatted: Font color: Auto

2. Water Supply

2.1 Water Supply strategy public opinion research

The in-depth (focus group) component of the research was completed. We completed the questionnaire design for the quantitative stage, testing the extent to which different opinions and preferences are held. The survey was subsequently conducted and the results are being reviewed

2.2 Draft Wellington Water Management Plan Technical Report

Results from the public opinion research, covering use and intent to use water efficient actions and equipment, is being incorporated into the Technical Report, along with updates of various city council water management activities. The Technical Report was returned to the customers as a "final" draft for comment in mid-January.

2.3 Spring mulching campaign

Most participating retailers were visited during December for feedback, following the end of the promotion. Indications are that sales of mulch were significantly higher during November 2007 than the same period in 2006, although the climate between years is likely to have been a major factor in this result. Our mulching initiative was welcomed and support in principle extended for a continuation of this promotion in future years.

2.4 Summer water conservation campaign

Minor revisions to our print advertising were completed and the advertising schedule approved and booked during December.

A week of advertising activity was run from 7 January. The majority of activity is currently scheduled to begin from Monday, 28 January, but we are

continuing to assess the need for it and can cancel activity up to a week ahead of “air date” at our discretion.

2.5 Water map now “live”

A map showing the live supply of wholesale water from the Region’s various sources and the previous day’s supply is now available to view on the GWRC web site. We are now working to develop more in-depth information to allow comparisons between periods, graphing and other manipulation of the available data.

A media release has been prepared to promote this new development. We are planning to issue this in February, to reinforce the main points of the water conservation campaign and coincide with the new school year.

2.6 Water treatment plant education resources

2.6.1 Technical handouts

With a significant number of more informed visitors to our water treatment plants, e.g., tertiary students and overseas water supply managers, there has been a need expressed to develop more in-depth information that they may take away for future reference.

These information leaflets have been drafted, reviewed and are due to be published in February.

2.6.2 Education and interpretation

There are significant opportunities to improve the level of engagement with the school children and other non-technical visitors to the water treatment plants, and to subsequently improve the awareness and communication of why and how our water is delivered to the Region’s cities.

3. Parks

3.1 Regional Parks Report 2006-07

This report was distributed to around 450 decision makers and influencers in and associated with territorial authorities, the Regional EDA, Government (e.g., SPARC, district health boards) and non-Government agencies with whom we share some common objectives. The publication has been very well received, with many positive comments from recipients.

3.3 Signs

3.2.1 Battle Hill History Trail

This project has been completed, with the signs currently being printed. The signs are due to be erected in time for the launch of the Battle Hill Farm Forest Park History Trail on 9 March 2008. This event will include guests from Ngati Toa and Te Atiawa (Tenths Trust), which have provided important information as to the battle that occurred there between Te Rangihaeata and British troops in 1846.

3.2.2 Queen Elizabeth Park Geological Trail

These signs are intended to interpret the particular geomorphology of the park and its formation many thousands of years ago. Dr Les Molloy, Natural Heritage Consultant, was commissioned to provide the text for the panels, with assistance from Dr Tony Edwards. Funding for the signage has come from Transit New Zealand - as a condition of the resource consent - with a small amount from the Environmental Enhancement budget.

The signs are currently with the graphic designer and should be completed and erected in various sites throughout the park early in 2008.

4. Events

4.1 Regional Outdoors Programme

The Anything Vintage Festival at New Year attracted over 4,000 participants over three days - a great start to the three month programme.

New events linked with sporting clubs and community groups have been especially well received, with the gliding weekend booking out quickly, as well as the have a go fly fishing. Because of the popular demand, the latter are now holding extra afternoon sessions.

Old favourites such as the Rimutaka Rail Trail and Lighthouse Lakes remain very popular and are both booked out. We are investigating holding a second Lighthouse and Lakes walk at the start of April because of the number of enquiries that we continue to take.

On the whole bookings are going well across the board, with the majority of events almost or completely booked out and the "turn-up" events attracting good numbers. As we approach events, media releases are sent out if bookings are a bit light, which continues to be a successful tool of reminding the public what is on offer.

4.2 Buggy walks

The December Buggy Walk at Harcourt Park/Hutt River Trail attracted 97 parents and babies, while the January event (combined with a Kev the Kiwi) walk attracted over 300 people.

4.4 Planting days

We continue to field enquiries for corporate planting days from Volunteer Wellington, as well as individual companies for autumn/winter 2008. This augurs well for the season ahead.

5. Visitor monitoring - East Harbour Regional Park

During the period we have recruited a supervisor and several students to assist with the visitor monitoring exercise planned to take place at East Harbour Regional Park. Starting on the last weekend of January, this will involve counting people and on-park interviews.

The project is due to conclude in late February but this depends on the weather. A report will be presented to the Committee meeting in May.

5. Networking

5.1 *At the Heart* regional physical activity plan

The Expression of Interest was lodged with SPARC early in December. Since then the plan has been endorsed by Hutt City Council. A paper requesting endorsement by this Council is to be presented to the Council in February.

5.2 *West Wind* recreation area

Staff members have met with Meridian Energy as part of a “think tank” to discuss recreation possibilities for the Makara wind farm site.

6. Community liaison

During the period staff members attended meetings of the Friends of Belmont Regional Park and Queen Elizabeth Park, the Guardians of Whareroa, ARAC and the Hutt River Trail Operations Group. All were relatively short meetings, mainly focusing on their roles in the Regional Outdoors Programme events and finishing with a Christmas celebration. The meeting rounds recommence in earnest in February.

We sent out copies of the East Harbour Regional Park Resource Statement to community and user groups, neighbours and people who contributed to the management plan review. Feedback has been generally very positive and we are planning a similar exercise in relation to the Queen Elizabeth Park Resource Statement.

7. Landscape projects

Whareroa Farm

The outcome of this project is a detailed report that is intended to provide Councillors with such information they require to make a decision on DoC's request that GWRC take over management of the property. The information includes the historical background to the site, including its past ownership and occupation; the current state of the property in terms of its geomorphology, flora and fauna, and the potential of the park to meet GWRC's objectives in terms of the LTCCP and its contribution to the regional parks network.

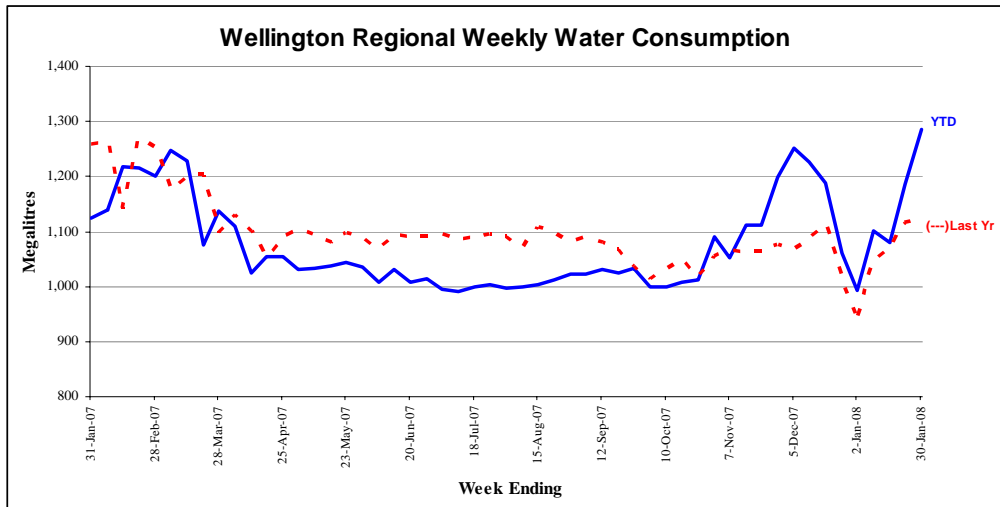
8. Staff

Our Landscape Architect finished up just before Christmas. Interviews for a permanent Landscape Architect were held in mid-January and we expect to confirm an appointment shortly.

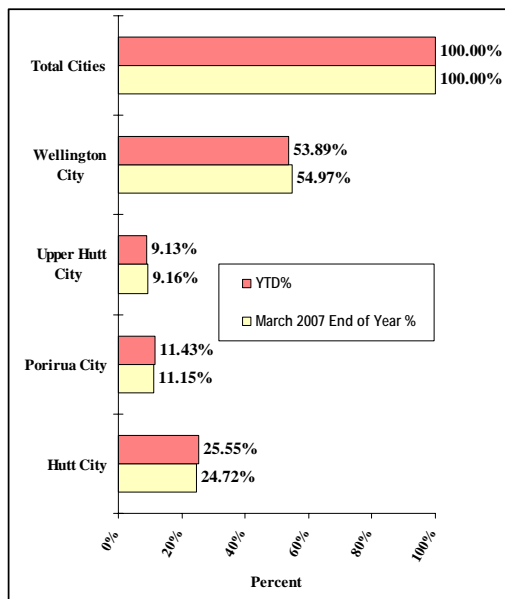
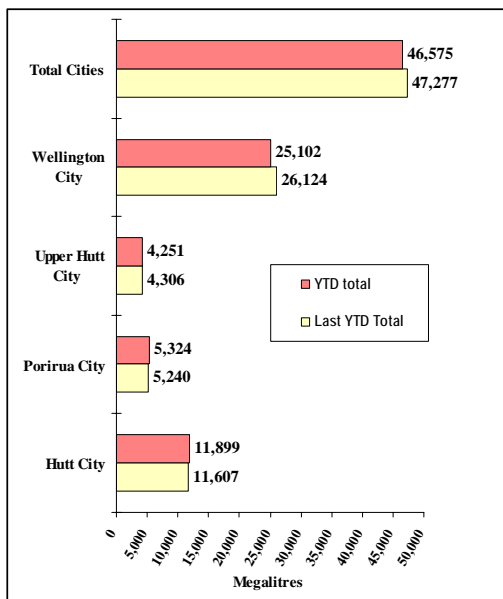
9. Water usage

Charts detailing water usage are on page 18.

Water sold over the last 12 months



Water sold during the metering year to date (April 2007 to March 2008)



Forestry

November 2007 to January 2008

Forestry

Review of operations for the period ended 31 January 2008

1. Plantation Forests

1.1 Log Harvest Contract

As with the last report, both crews remained within Valley View. This was an advantage in terms of transport distance but we must ensure that sufficient volume is retained in Valley View to cover the winter period.

There was some easing of the domestic market as the “summer only” Wairarapa blocks came on stream and increased the volumes available to the local mills. Export prices have in the main recovered from the October slump and now comfortably exceed the September prices. Although much of the increase has been taken in increased shipping costs which continued their upward trend.

As a counter to shipping costs, in conjunction with Consolidated Forest Harvesting and Rayonier we have sent 104 containers of logs to Northern China as a trial. The first of these have arrived at destination and have been well received by the purchaser. Further consignments are anticipated and we are seeking to widen the range of log grades accepted.

The mills stopped accepting logs somewhat earlier for the Christmas break this year. This was to ensure that no stocks were carried over into the New Year. We were fortunate that we were able to load out to export right up to Wednesday, 19 December.

Production for November was 5,752 tonnes for revenue of \$130,417, and December 4,227 tonnes for \$90,554.

1.2 Silviculture Contract

We have engaged a Wairarapa based Silvicultural Contractor to undertake the medium prune within the safety template for the Deerstalkers’ Rifle Range at Kaitoke. This move was necessary, given the short time that we were able to close the range.

The closure took effect from 1 November and the range reopened on 21 December. In this time the part of the block within the safety template was completed.

The resident Contractor is still having difficulties in employing and retaining staff. This period the Wairarapa crew completed 19.5 ha and the local crew 25.9 ha.

1.3 Plantation Forestry Operations

Although we are on target for a harvest of 70,000 tonnes for the year having achieved 35,423 tonnes by Christmas, I would still like to obtain the services of a further small crew to enable some small remnant blocks to be cleared. A

crew with a forwarder would be even better as there are definite opportunities to use this type of crew within our estate. The problem is that there are very few crews of this type in the industry.

When the “ridge clearing” for the wind farm comes on line, we will be able to support an additional full sized crew for at least two years.

The release spraying at Valley View was completed before Christmas and the effects are now clearly visible.

The main access roads and sections of the main road were graded for corrugations and camber corrections prior to Christmas.

Unlike previous years there were sufficient trucks available to clear the skids before the Christmas closedown.

1.4 Forest Access

Maungakotukutuku access remains the only significant problem, with the only access requiring two crossings of the Maungakotukutuku Stream between the end of the public road and our boundary.

1.5 Market Trends

As anticipated, export prices continued to increase modestly up to Christmas. The domestic demand eased with prices falling about \$2 per tonne. The new opportunities into China in containers may prove to be an effective way to avoid the worst of the shipping cost price rises. It will be even more beneficial if we can convince them to take a wider range of grades.

The domestic mills are giving indications that their situation may be somewhat delicate.

2. Reserve Forests

2.1 Tauanui logging

Logging progressed quietly on the northern side of the Tauanui River through November and December, until the crew shut down on 14 December when they had reached their mill quotas.

Volumes produced were 1,319 tonnes for November and 669 tonnes for December.

The road line has been cleared through a mixed Douglas fir/*Pinus nigra* stand to the mid-slope *Pinus radiata* stand where a landing will be formed to allow road line clearing to the ridge above.

With no local domestic markets for the Douglas fir, we were fortunate to find an export outlet for these logs. The *Pinus nigra* produced very good post and pole material, which was sold to Ruahine Timber in Dannevirke.

Revenue for November was \$35,136 at an average of \$26.56 per tonne, and December \$17,724 at an average of \$27.06 per tonne.

2.2 Silviculture

Low pruning in Hiwinui has been progressed as trigger heights have been reached. Only very small blocks currently require treatment.

2.3 Maintenance

A major roadside spraying programme for gorse has been completed in Tauanui and Hiwinui Forests, with all roads in Hiwinui treated and the main access road to and within Tauanui also treated.

2.4 Fire danger

Rainfall Figures have now been totalled and compared with averages for year ended 31 December.

Hiwinui (since 1993)

Average rainfall	1222 mm	2007	836 mm
Difference	-386 (32 percent)		

Stoney Creek (since 1991)

Average rainfall	1400 mm	2007	1112 mm
Difference	-288 (-21 percent)		

Tauanui (2007 1st year)	848 mm
--------------------------------	--------

2.5 Fire danger

Reasonable rainfall in late November and during December brought relief from an extreme trend in the fire danger throughout the Wairarapa and our reserve forests.

Water Supply

November 2007 to January 2008

Water Supply

Review of operations for the period ended 31 January 2008

1. Items of note

- As part of our emergency preparedness programme, a trial was conducted to operate the Gear Island chlorination system under manual control.
- A minor scrub fire occurred in dry vegetation around the standby generator exhaust at Te Marua Water Treatment Plant. There was no damage caused and a spark arrestor has since been installed. A survey of the potential for similar fires at other generator locations has been conducted.

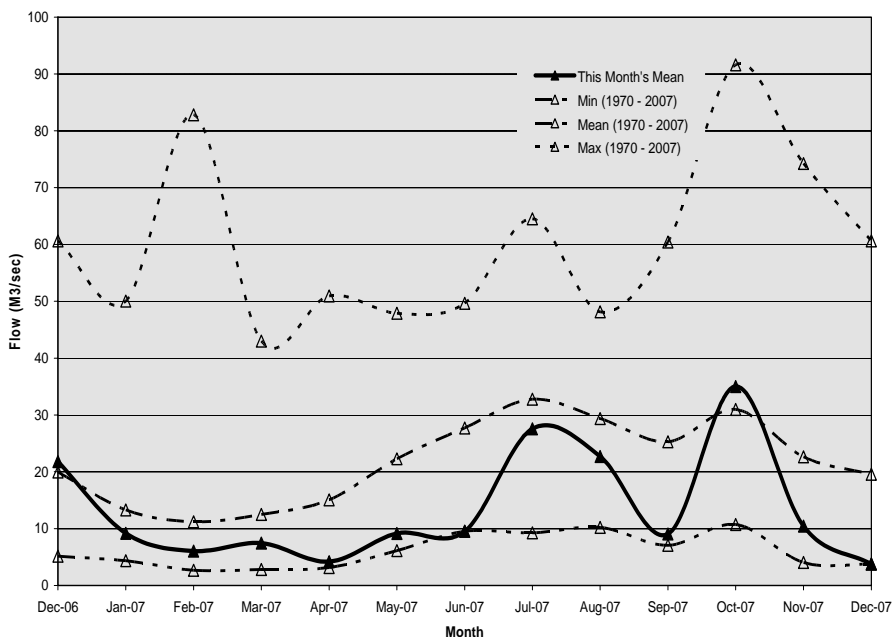
2. Supply situation

There were no supply issues for the period.

Hutt River flows

The mean flows for the Hutt River were:

- November Near the minimum
- December At the minimum

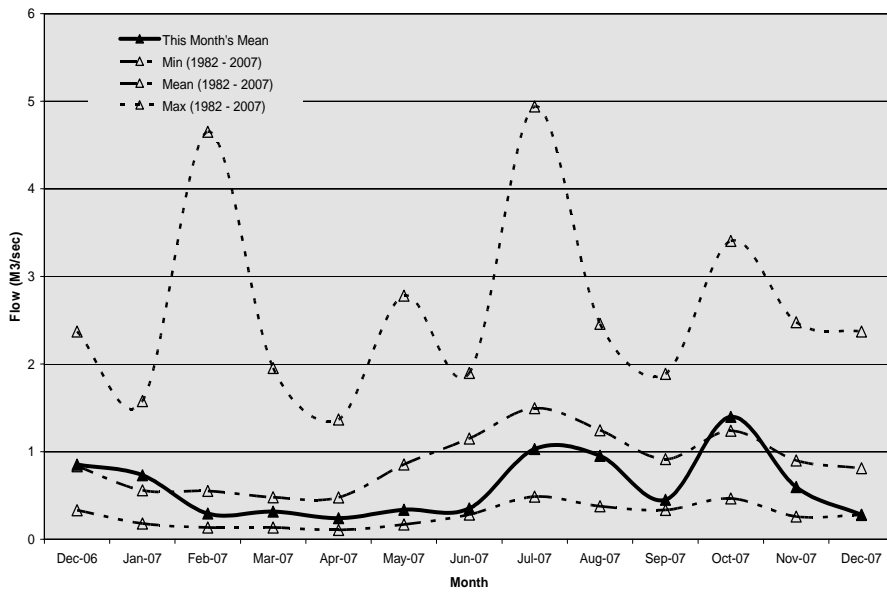


Wainuiomata River flows

The mean flows for the Wainuiomata River were:

- November Near the minimum

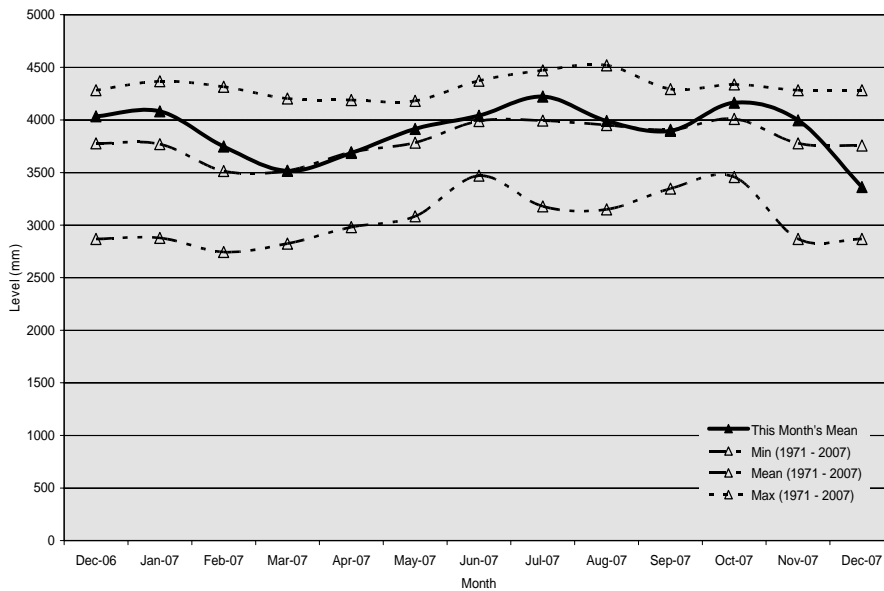
• December At the minimum



Aquifer levels

The water levels in the Waiwhetu aquifer during the period were:

- November Above average
- December Below average



3. Quality

- There were no transgressions at Te Marua for the period but there have been some problems with polymer that have affected filter performance, resulting in numerous turbidity spikes. Backwash chlorination has been reinstated and filter run times have been reduced.

4. Health and safety

- There was one minor incident during the period, which involved a staff member hitting his elbow against a valve chamber wall.
- At Wainuiomata Water Treatment Plant the annual external railway safety audit was carried out, along with the annual track inspection.

5. Environmental

- There was a transgression at Kaitoke weir when a brief period of overabstraction was recorded.

6. Operations and maintenance

6.1 General operations

- The Te Marua fluoride system annual calibration was completed.
- Exercising of all valves in the parallel mains was completed.
- Additional pump performance testing and the annual diesel tank inspections were completed at Waterloo Water Treatment Plant.
- Stolen earthquake couplings and flanges have been replaced.

6.2 Pipeline leaks

There were five leaks repaired during the period.

6.3 Plant tours

- Te Marua Water Treatment Plant - 2 tours (29 people)
- Wainuiomata Water Treatment Plant - 2 tours (155 people)

7. Projects

- The dual stream valve at Waterloo was commissioned.
- Work began on the lime reuse hydro-clone project at Wainuiomata Water Treatment Plant.
- Work on the Wainuiomata air valves project was completed, with the installation of five new air valves in the Wainuiomata Tunnel valve chamber and one new air valve in Richard Prouse Park. Eleven new air

valves were installed in total for this project.

- The 525 mm diameter cast iron pipe along the Hutt Motorway was marked out for Transit New Zealand for future use as a duct. The 525 mm cast iron main was decommissioned with the 525 mm valves excavated, the existing valves blanked and the closing pipework removed. An inspection was completed by Transit New Zealand's valuer.
- A "dummy run" was completed to supply Pukerua Bay reticulation via the new cross connection by fire hydrant hoses for the emergency supply project. The cross connection from the Greater Wellington Regional Council (GWRC) inlet main into the Pukerua Bay reticulation was completed, which allows the reservoir to be cleaned without jeopardising the reticulation supply.
- For the new Wainuiomata emergency supply project, a new branch valve and a non-return valve were installed from the Wainuiomata 525 mm OK main into the Hutt City Council reticulation main. This took place in the Fitzherbert Roundabout, Wainuiomata.
- The preliminary service locations at Silverstream and opposite the Cruickshank branch line in Fergusson Drive were carried out for future connection from the GWRC 900 mm water main into the Upper Hutt City Council reticulation mains for emergency supplies.

Engineering Services

November 2007 to January 2008

Engineering Services

Review of operations for the period ended 31 January 2008

1. Water asset management

Key projects and their status are as follows:

- The replacement Kelburn pumps have been installed in the new Karori Pumping Station and operated satisfactorily over the Christmas period. The old Karori Pumping Station will now be decommissioned, with all live pipework being disconnected in January and the old building demolished in February.
- The Silverstream line valve actuator is programmed for commissioning in February. The actuator will automatically close off the Kaitoke pipeline and prevent water loss if the pipeline ruptures in seismic activity.
- Design and planning is under way to install additional valves and pipework to the main water supply pipe across the Wellington Fault at Te Marua. This will allow faster reinstatement of the water supply following movement of the Wellington Fault and damage to the main supply pipe. Large diameter valves to isolate the pipe have been ordered.
- The installation of network cables for a new control system at the Te Marua Water Treatment Plant is under way. This will be followed by development of control logic for the processes.
- The Contract details for supply and implementation of the system optimiser has been finalised with Derceto Ltd and should be ready for signing by the end of January. System build and implementation will follow in February. The project timeline will now need to be updated but our target is substantial completion by the end of June. When completed, the optimiser will schedule and operate the complete wholesale water supply network to obtain the most economic water supply and pumping regime to meet customer demand.
- The new effluent pipe from the Wainuiomata Water Treatment Plant centrifuge to the Wainuiomata sewer and the water filter to waste pipework are both programmed for commissioning in March.
- A cross connection has been installed near the Wainuiomata shopping centre between the Wainuiomata/Thorndon water main and Hutt City Council reticulation system. This provides an emergency water supply for Wainuiomata if the local reservoir is out of action.
- Planning is under way for the installation of inlet standpipes in the Pukerua Bay Reservoir in February. This will be followed by similar installations in the Linden and Aro Reservoirs. The standpipes will protect against water loss in the event of reservoir or supply pipe failure.

- Our report on options to increase the reliability of the water supply to Karori has been forwarded to Capacity for comment.

2. New water sources

- A draft water supply strategy is being developed. This will consider the options identified for increasing the water supply and/or reducing demand to address both the short-term and meet the longer-term need for water consistent with the Wellington Regional Strategy.
- A draft investigation report has been completed on options to increase the available water storage at Te Marua.
- Initial investigation and reporting of the Upper Hutt aquifer is now complete
- A joint letter from both GWRC and Wellington City Council has been sent to Capital and Coast District Health Board requesting confirmation of their commitment to fund a new Central Business District water reservoir in conjunction with the two councils.
- A report on the potential impact of an increased water take at Kaitoke weir is practically complete. Discussions with stakeholders (Fish and Game New Zealand and the Department of Conservation) are continuing to evaluate how this could be implemented, whilst minimising the impact on river habitat, fish passage and general river health.

3. Quality assurance

- Our records indicate that compliance with the new *Drinking-Water Standards for New Zealand 2005* continues to be achieved at all four water treatment plants.
- Formal certification of the B grade awarded to the Waterloo Water Treatment Plant has been received (this is the highest grading available without chlorination of the supply, as required by Hutt City Council).
- Information for the grading of the Gear Island Water Treatment Plant is being collected. This is expected to be completed in February and submitted to Regional Public Health.
- An external surveillance audit of our quality assurance and environmental management systems was carried out by Bureau Veritas Certification on 7 and 7 January 2008. No non-conformances were noted. A small number of opportunities to improve our systems were identified by the auditor and these will be implemented. An external audit for the three yearly recertification of our management systems is planned for November 2008.

4. Environmental

- The project to reduce the volume of waste lime produced from water

treatment at the Wainuiomata plant has commenced with fabrication of a hydrocyclone to extract water from the waste lime slurry.

- Instrumentation for the three sentinel wells on The Esplanade in Petone will be installed in February, after completion of a power supply agreement with the Sea Cadets. The Environmental Monitoring and Investigations Department will then commence saline monitoring to reduce the risk of contamination of the Waiwhetu aquifer.

5. Catchment management

- Three “short” and two “long” guided tours were held and enjoyed by a total of 139 participants.
- As expected, the usual rate of vandalism and trespass increased over the school holiday period and during the spell of good weather.
- A cull was undertaken in December, with 19 pigs, 4 goats and 2 deer culled.
- A decision has been made to defer to 1080 operation planned for the Hutt Catchment following a residual trap catch of 1.5 percent.