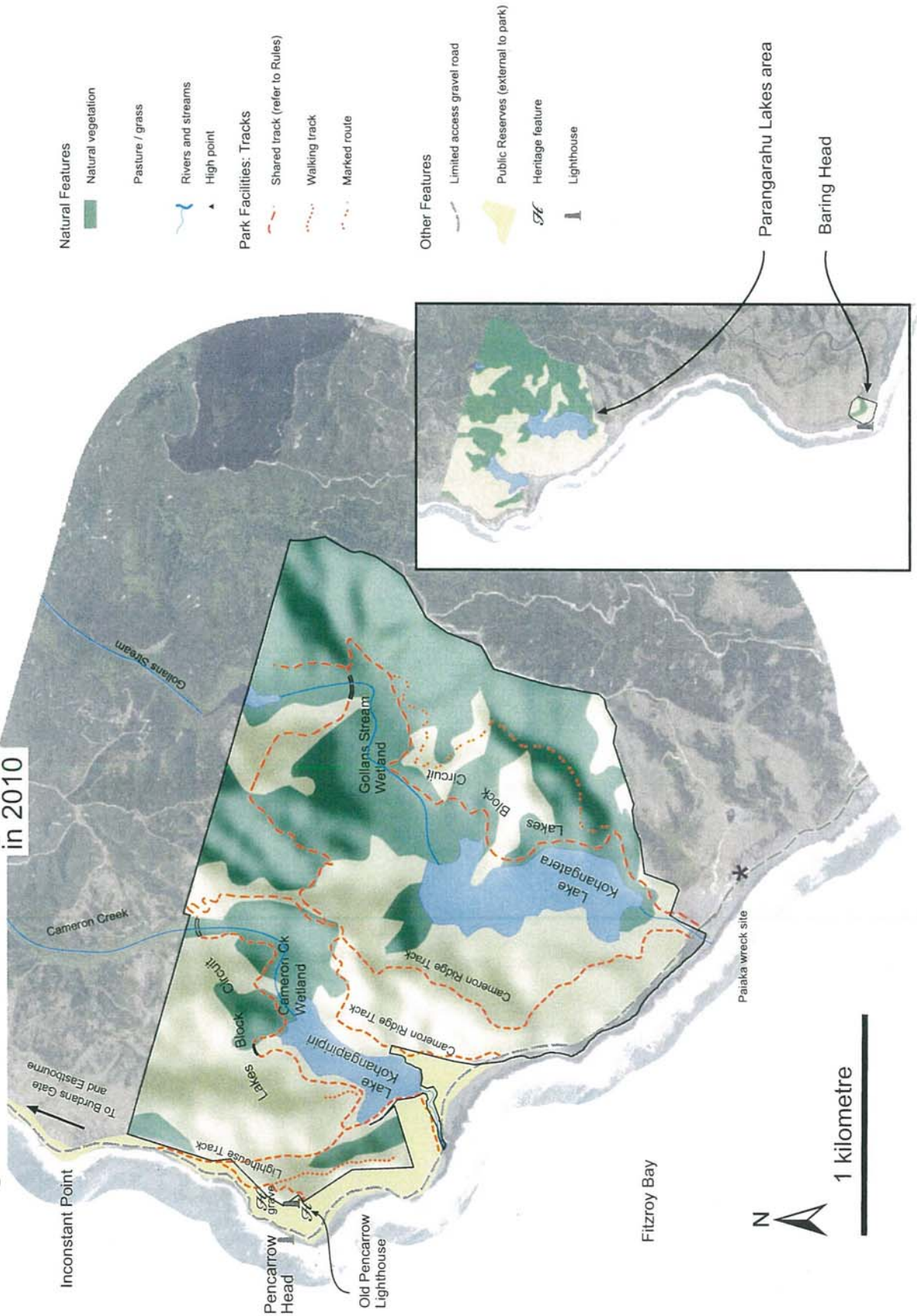


# EAST HARBOUR REGIONAL PARK - Parangarahu Lakes Area & Baring Head in 2010

Note: No projected future changes map is provided for in this plan.



- Natural Features**
  - Natural vegetation
  - Pasture / grass
  - Rivers and streams
  - High point
- Park Facilities: Tracks**
  - Shared track (refer to Rules)
  - Walking track
  - Marked route
- Other Features**
  - Limited access gravel road
  - Public Reserves (external to park)
  - Heritage feature
  - Lighthouse

