



## Oral submission to Eastern Bays shared pathway consent hearing

- From: Te Aranui O Poneke/Great Harbour Way Trust
- Presenter: Graeme Hall Trust Chair (and Eastbourne resident)
- Trust is a long-time advocate

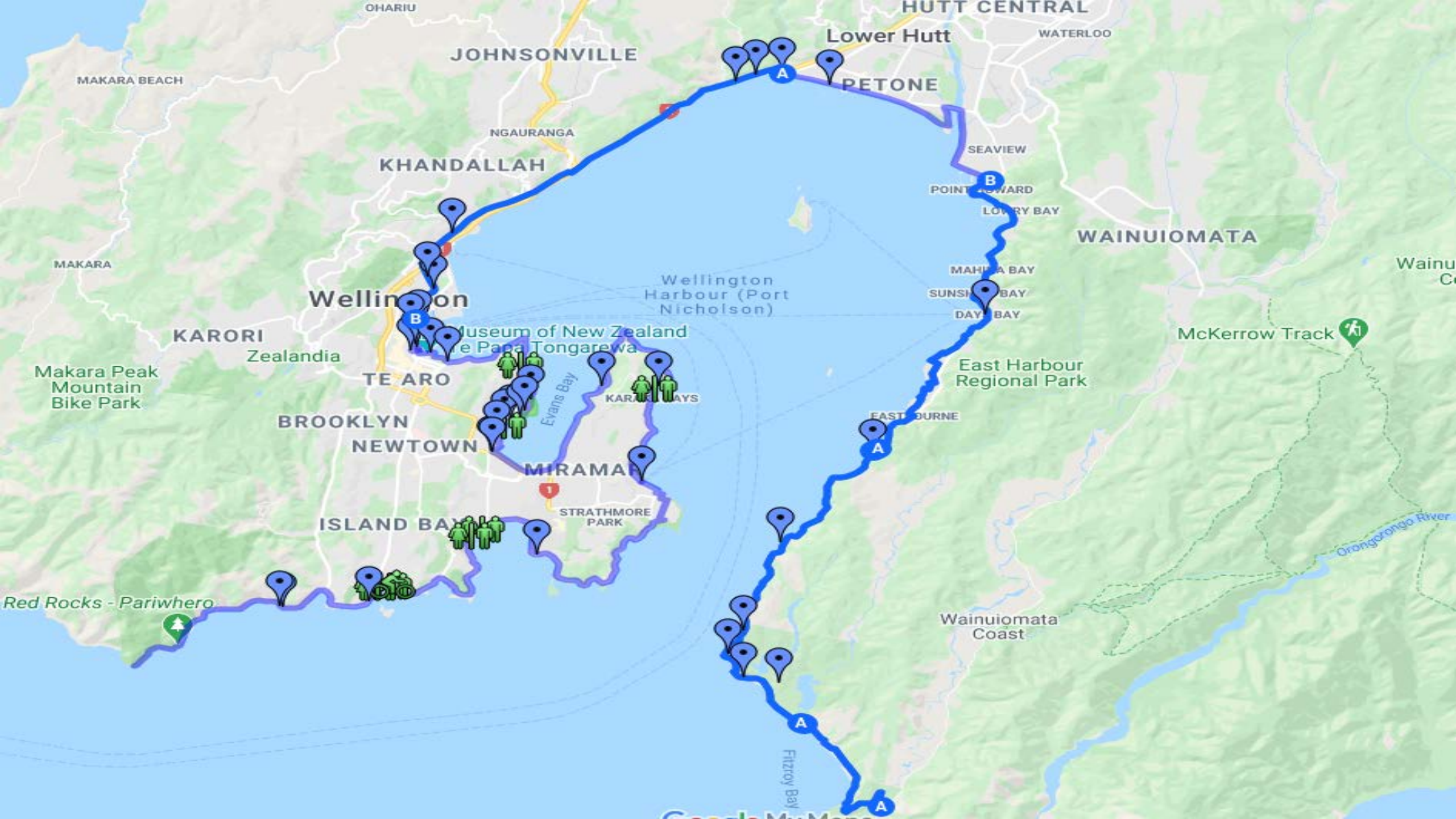




## **WHAT IS THE GREAT HARBOUR WAY (GHW)?**

### **& relevance to this resource consent application?**

- GHW a 72km walking-cycling trail circling Te Whanganui-a-tara, Wellington's harbour
- A large section of GHW sits within the Eastern Bays and Petone before joining State Highway 2



HUTT CENTRAL

Lower Hutt

WATERLOO

JOHNSONVILLE

PETONE

MAKARA BEACH

NGAURANGA

KHANDALLAH

SEAVIEW

POINT ASHWARD

LOVRY BAY

WAINUIOMATA

MAKARA

Wellington

Wellington Harbour (Port Nicholson)

MAHIA BAY

SUNSHINE BAY

DAY BAY

KARORI

Zealandia

Museum of New Zealand  
Te Papa Tongarewa

McKerrow Track

Makara Peak Mountain Bike Park

TE ARO

Evans Bay

KARORI BAYS

East Harbour Regional Park

BROOKLYN

NEWTOWN

EAST DURNIE

MIRAMAR

STRATHMORE PARK

ISLAND BAY

Red Rocks - Pariwhero

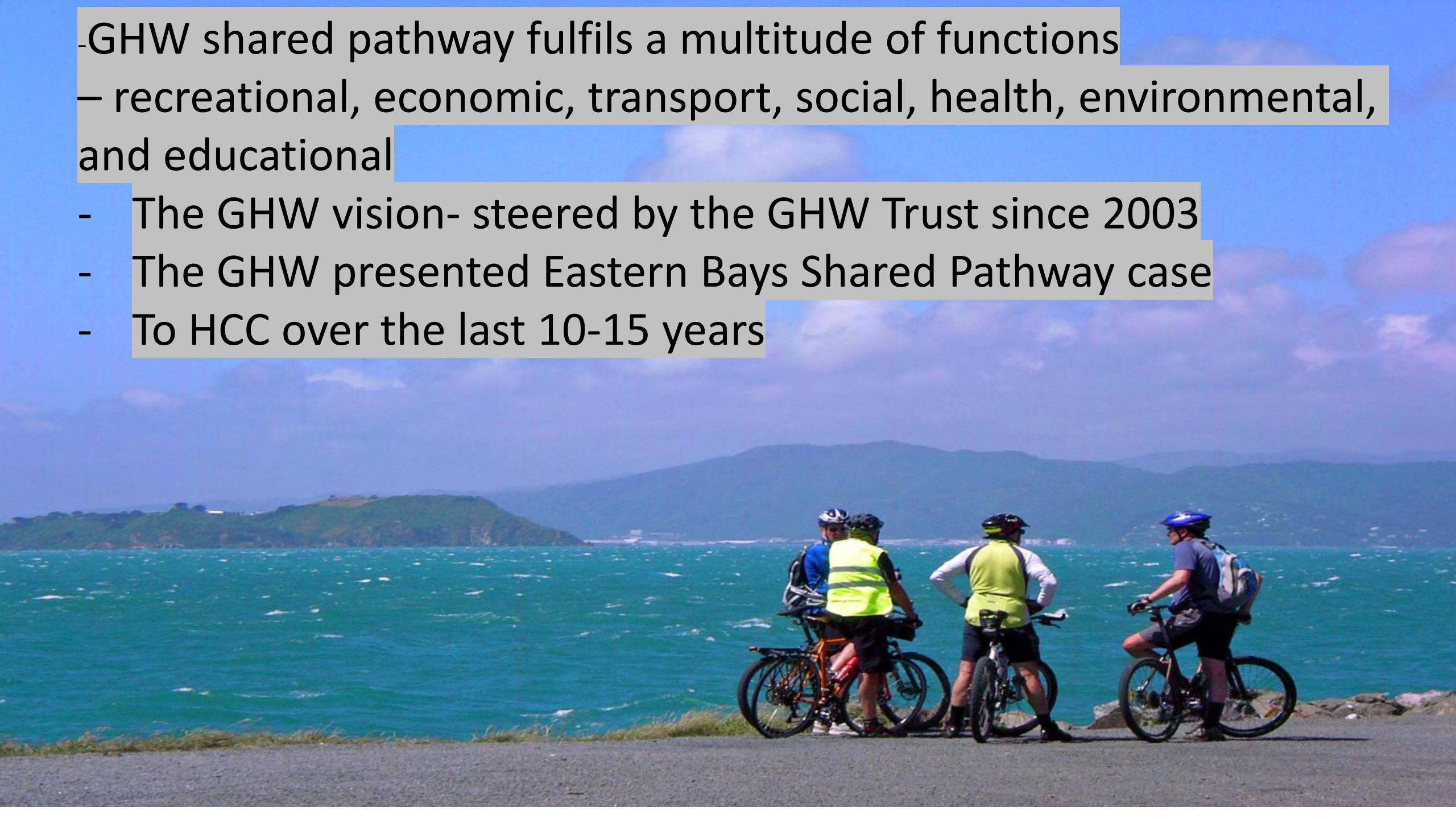
Wainuiomata Coast

Orongorongo River

Fitzroy Bay

Google Maps

- GHW shared pathway fulfils a multitude of functions
  - recreational, economic, transport, social, health, environmental, and educational
- The GHW vision- steered by the GHW Trust since 2003
- The GHW presented Eastern Bays Shared Pathway case
- To HCC over the last 10-15 years



# GHW Vision:

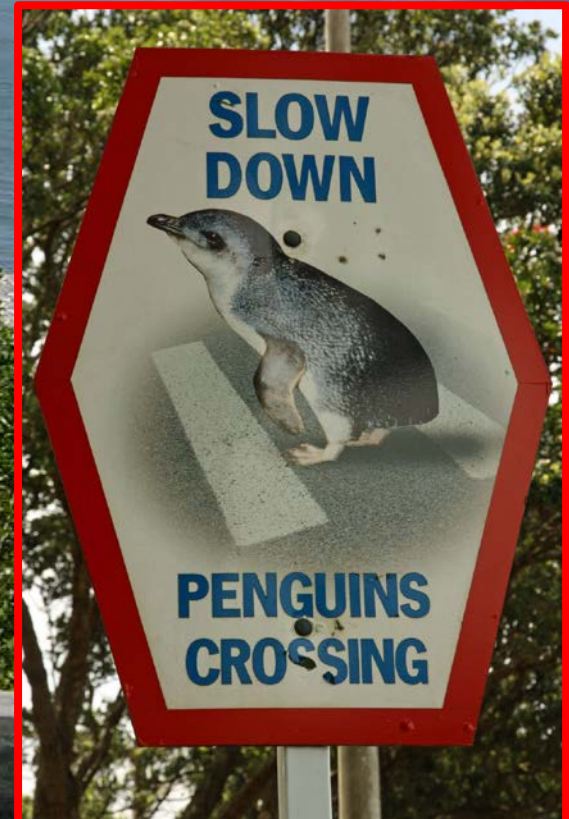
- The GHW - capitalise on the attributes of Wellington region's greatest asset – our harbour, Te Whanganui-a-Tara
- Few opportunities exist in the world to walk or cycle the entire coastline of a major city harbour at the water's edge



# GHW's Scope:

soaring city towers, peaceful suburban villages

- magnificent scenery, wild shorelines
- a huge variety of bird & animal life, shorebirds to seal colonies
- for many it will be the *journey not the destination*





**ENRICHING THE REGION'S CULTURE** through engagement

To enhance appreciation of Māori and Pākehā history and heritage via interpretive signs at geographic and historical places of interest.

## GHW OUTCOME:

- The end result --an attractive, safe, signposted, shared path, a **linear park**, celebrated nationally and internationally bringing substantial benefit to the region.





## The magical wellbeing effect of walking and cycling trails

- New Zealand has a growing network.
- The region can be a star
- The region – has many trails and quality mountain bike tracks
- The GHW acts as a network access spine for many of these.



# Linking to networks

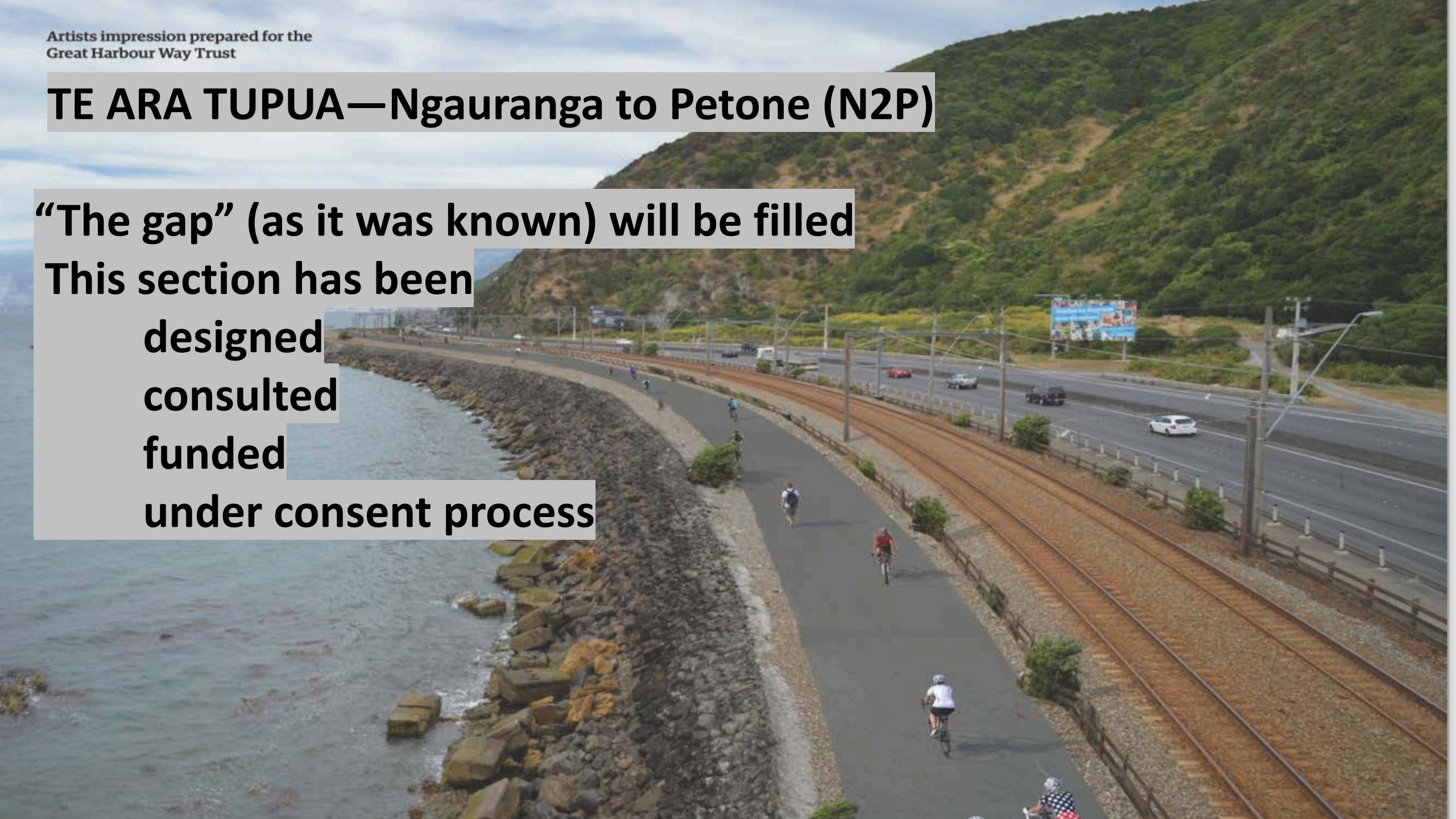
A group of mountain bikers is riding on a dirt trail through tall, dry grass. The bikers are wearing various colored jerseys and helmets. In the foreground, a biker in an orange shirt and white helmet is making a peace sign. The background shows rolling hills and a clear blue sky with some clouds.

## GHW network links

- Hutt River Cycle Trail
- the Remutaka Rail Trail
- Te Ara Tupua (N2P)
- Petone to Melling
- the Wairarapa Five Towns Trail

## TE ARA TUPIUA—Ngauranga to Petone (N2P)

“The gap” (as it was known) will be filled  
This section has been  
designed  
consulted  
funded  
under consent process



# Climate Change opportunities

To reduce car use

Cut carbon emissions

Prevent coastal erosion and tidal intrusion



**Eastern Bays-We are dealing with a major deficit here**



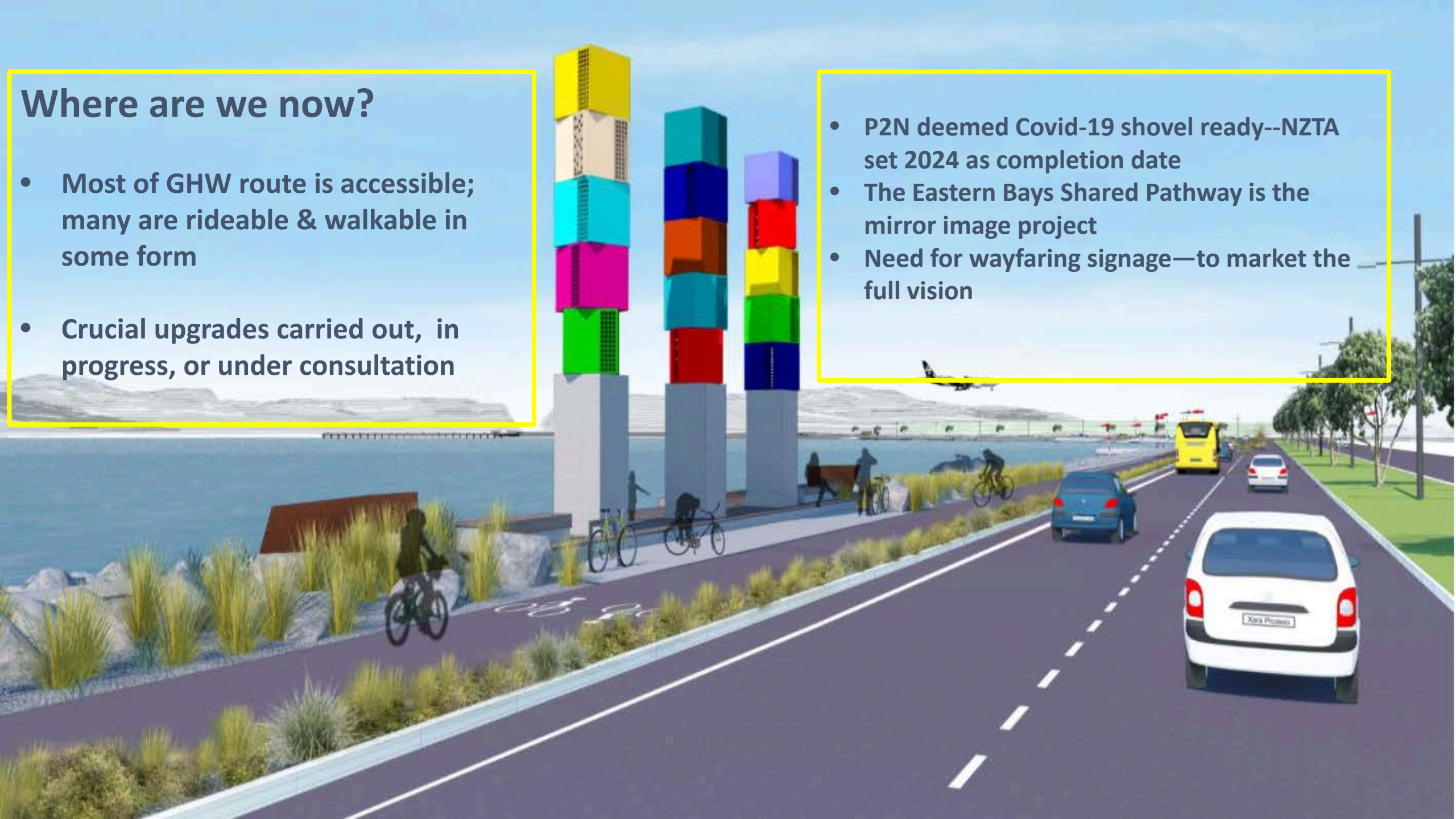


**Is this an equitable and safe provision for walkers, and cyclists?**

## Where are we now?

- Most of GHW route is accessible; many are rideable & walkable in some form
- Crucial upgrades carried out, in progress, or under consultation

- P2N deemed Covid-19 shovel ready--NZTA set 2024 as completion date
- The Eastern Bays Shared Pathway is the mirror image project
- Need for wayfaring signage—to market the full vision





## We strongly support this resource consent application:

- It contributes strongly to community, City ,and region
- It addresses gaps in infrastructure, safety, community facilities, recreational provision, health, climate change resilience, and economic and social well-being
- It has high community and wide stakeholder support
- It is comparable in importance to Petone to Ngauranga, or the Auckland Sky Bridge - it will be transformational in impact





**Thank you for the opportunity to present to you today**  
**15 Dec 2020**