

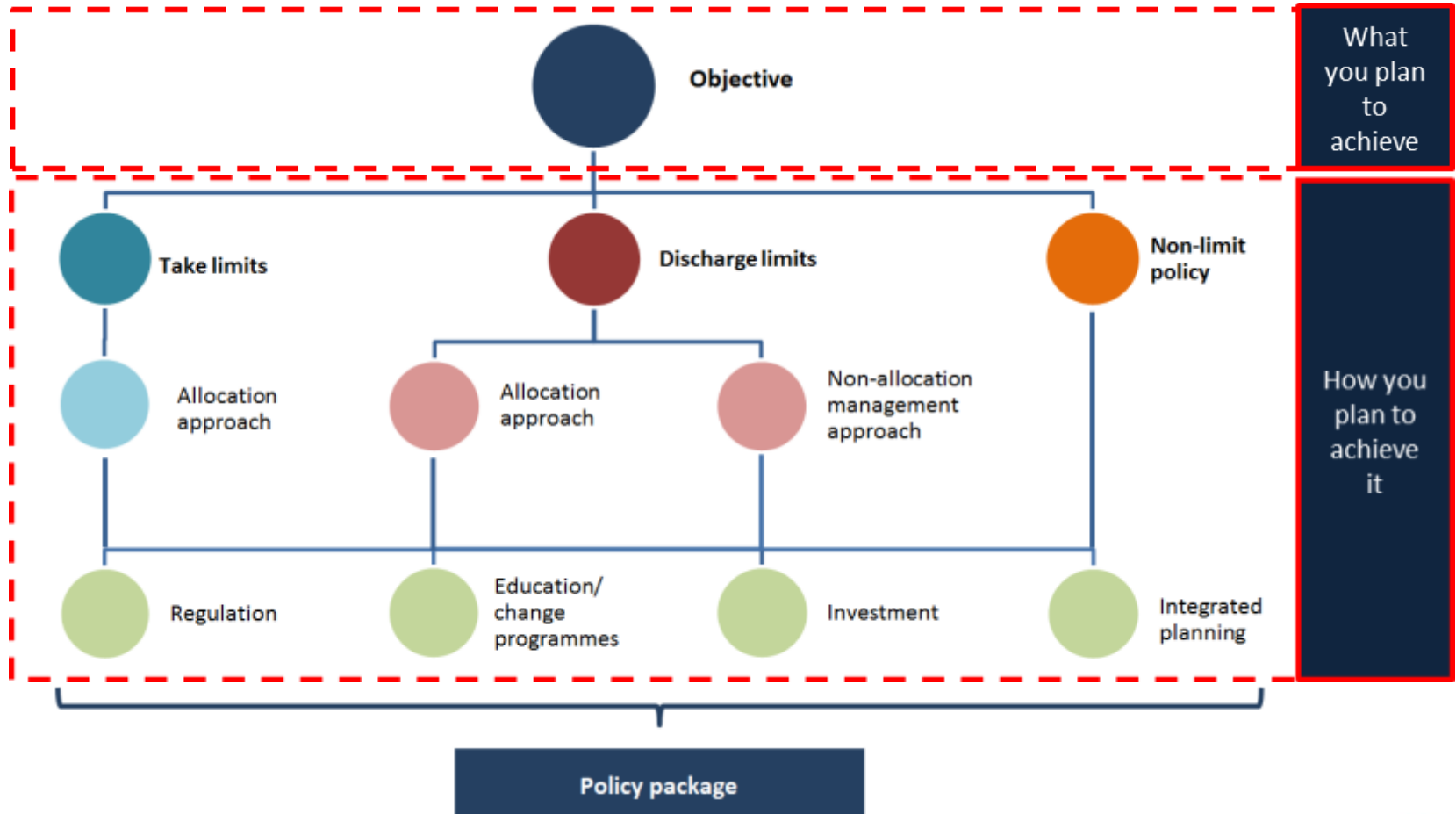


Getting objective

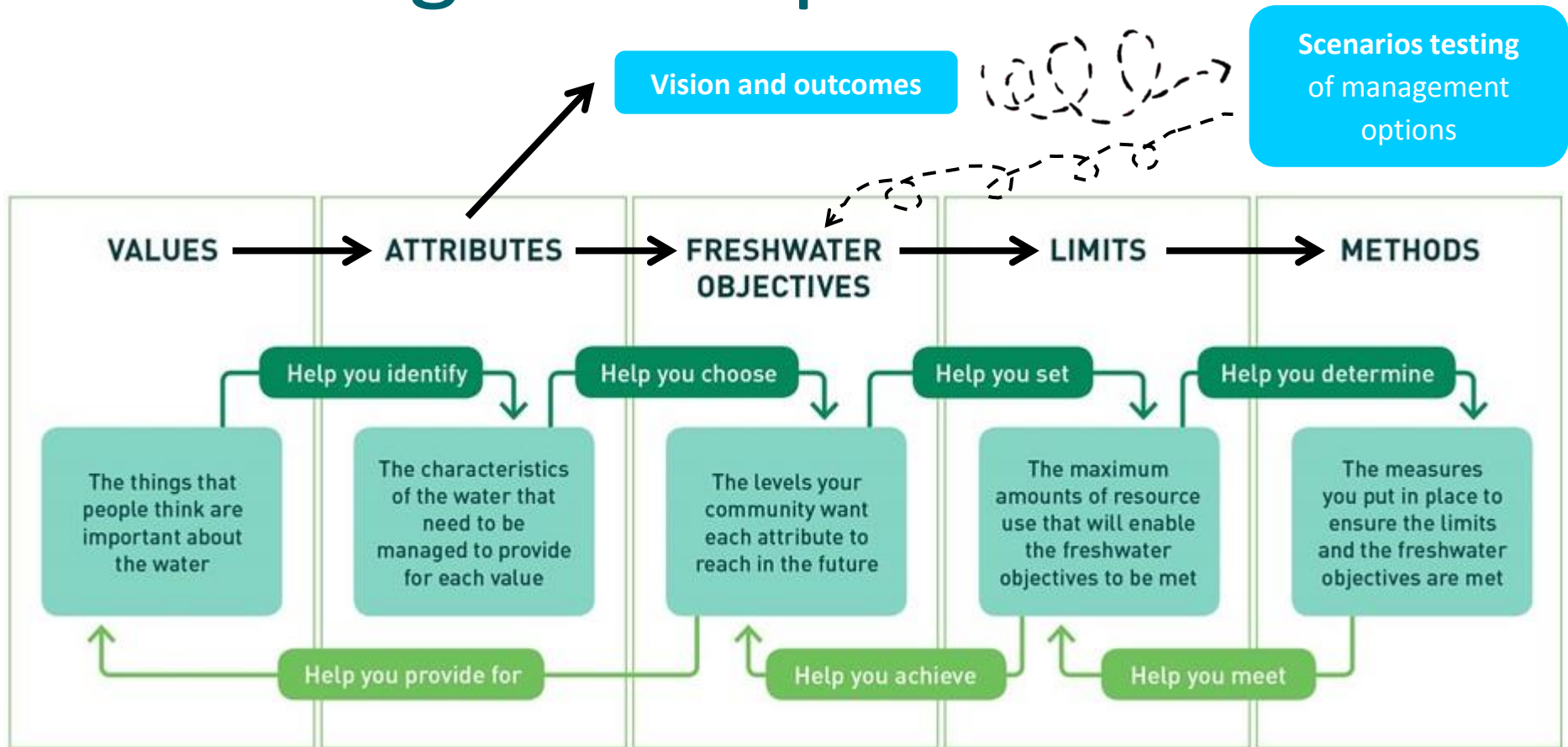
Outline

1. Reflecting back – what's the context for this korero?
2. What is an objective?
3. How might we write one?

Let's recap



Retracing our steps



Values

Value Group	Description
Māori Use – Mahinga kai	<p>Mai te pae maunga o Tararua tae noa ki Kawakawa moana (from the Tararua mountain range to Palliser Bay)</p> <p>Mauri of our wai supports our people and our place</p> <p>Wairarapa, wairua, wai whakawātea, wai tohi, wai ora, wai tohu; glistening waters, spiritual waters, cleansing waters, baptismal waters, life giving waters, guiding waters</p> <p>Wai tuna, wai pātiki, kourarau: eel waters, flounder waters, abundant crayfish</p> <p>Ngā puna, ngā manga, ngā awa, ngā roto, ngā repo, taku taimoana</p>
Te Mana o Ruamāhanga - Mauri, Habitat, Biodiversity and Natural Character	<p>The unique identity of our rivers, lakes and streams.</p> <p>Their flow, shape, form and colour.</p> <ul style="list-style-type: none"> The life force of the water, the geology, plants, fish and animals. Natural character <p>This includes:</p> <ul style="list-style-type: none"> Riparian systems Wetlands Groundwater Indigenous fish and in-stream habitat Water quality and quantity (flow, depth) Fish passage and spawning places Interdependencies between groundwater and surface water, wetlands, forests, attenuation and recharge Wairarapa Moana The Conservation Estate The coastal environment
Our Ruamāhanga river culture	<p>Our histories, our heritage, our whakapapa.</p> <p>Our traditions, our social activities, our special places related to our waterways, then, now and in the future. Our social activities; camping, weddings, baptisms and barbeques. Our understanding and respect for peoples connection to water bodies</p> <p>To tātou awa – we are shaped by the natural character of our waterways</p> <p>Assurance that our water is okay, what it looks like, sounds like, smells like, feels like to us.</p>
Ruamāhanga Economic Use, Resilience and Prosperity	<p>He taonga te wai, water is life</p> <p>Water sustains our livelihood; water grows our people and communities.</p> <p>Reliability of water supply supports our; incomes, employment and innovation, our farming, industry, tourism and commercial fishing.</p> <p>Sustainable economic use of water brings resilience and prosperity.</p> <p>In the Wairarapa:</p> <ul style="list-style-type: none"> Our livelihood and wellbeing is tied to water quality and quantity The benefits of water are shared equitably amongst our community Our water storage can improve security of supply Our water isn't owned by anybody Our water is managed by everyone We value the efficient use of water Protection of assets through flood management
Ruamāhanga community public health and wellbeing	<p>Hau ora tangata</p> <p>Wai ora – Water for our health; spirit, mind and body</p> <p>Water for drinking</p> <p>Protection of public safety through flood management</p> <p>Safe management of stormwater and sewage</p>
Ruamāhanga Recreation	<p>Recreation supports our community's health and wellbeing.</p> <p>Currently, swimming, fishing, wading, boating and māhi parekareka ki te wai (enjoying yourself by the water) are important recreational activities in the Ruamāhanga Whaitua (catchment). Recreational activities are supported by access to water bodies</p>

Vision and outcomes

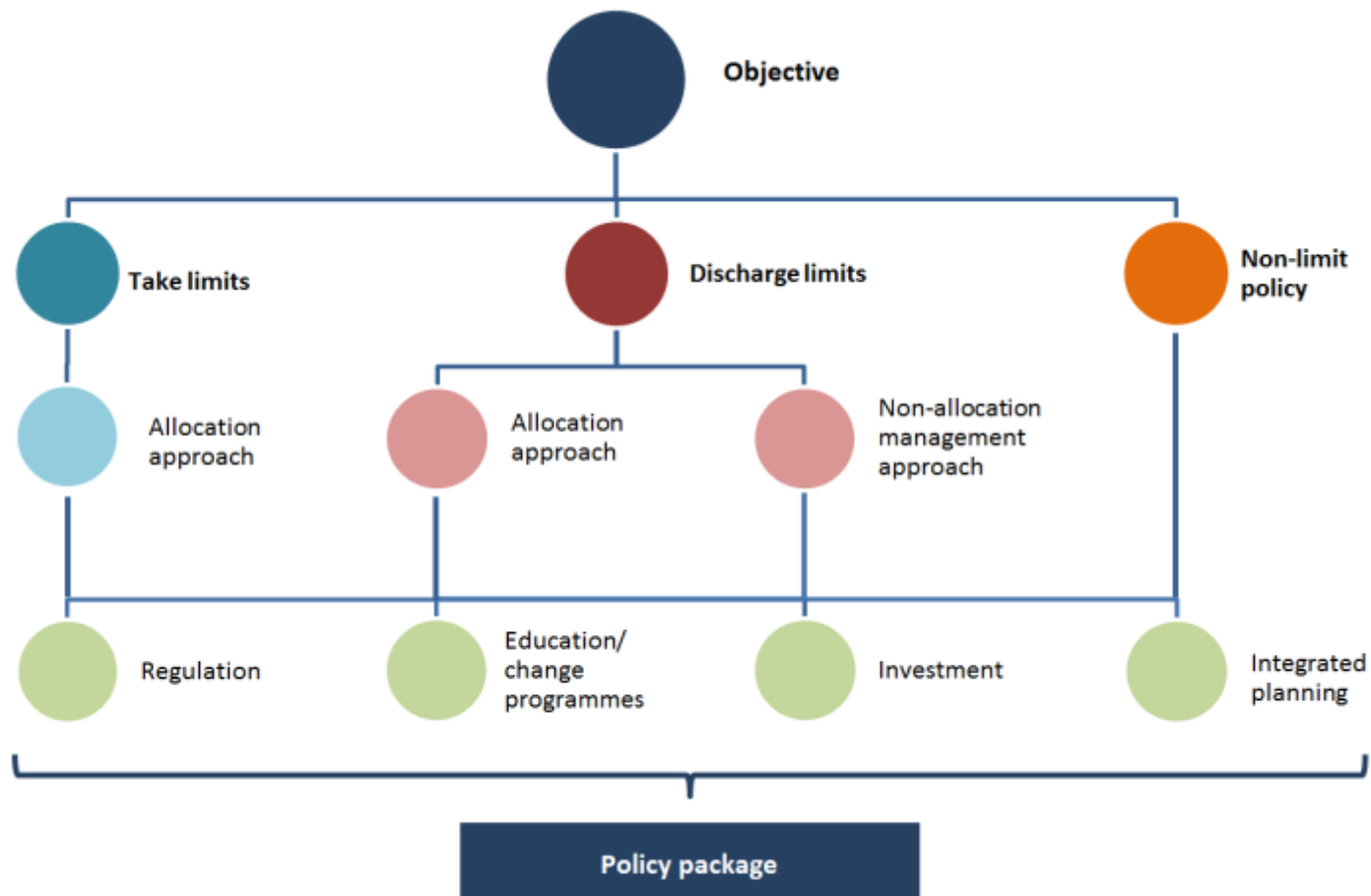
Vision:

Wairarapa – Where Water Glistens

Outcomes:

The future is engaged communities proactive in the long term sustainability of the catchment as a whole. A place where:

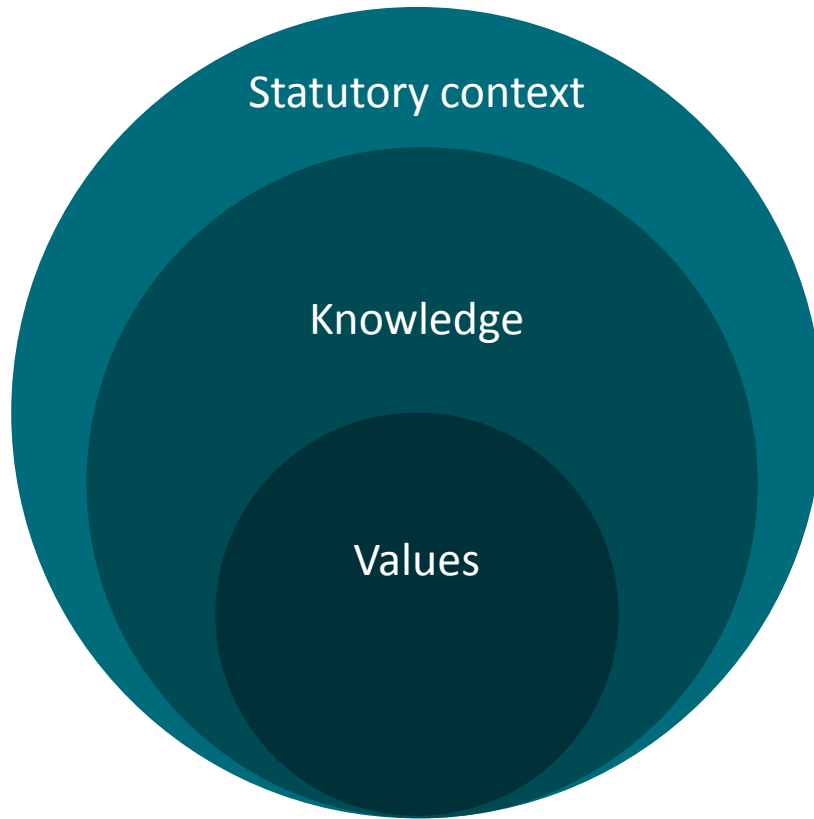
- we are all connected to the water so we are all equally responsible for creating a more natural state;
- holistic land and water management creates resilience;
- recreational and cultural opportunities are enhanced;
- there is a sustainable economic future;
- water quality is improving;
- ecological enhancement is sustainable;
- Ko wai, Mo wai, No wai: waterways connect communities, there is a sense of identity for people and water;
- there is safety and security of (drinking) water supply.



Setting objectives

- From values
- With knowledge
- Applying principles and your decision making process
- Understanding statutory context

Setting objectives



Policy advice

Mana whenua
Community
Technical experts
Modelling

Mana whenua
Whaitua community

What makes a good objective?

(to a planner)

- Clear and specific
- Written in a full sentence
- Includes **what**, **where** and **when** it will be achieved
- Written so it can be measured

What makes a good objective?

**Gives voice to what you want the
future to look like**

**Knows who it's talking to and what
it's trying to deliver**

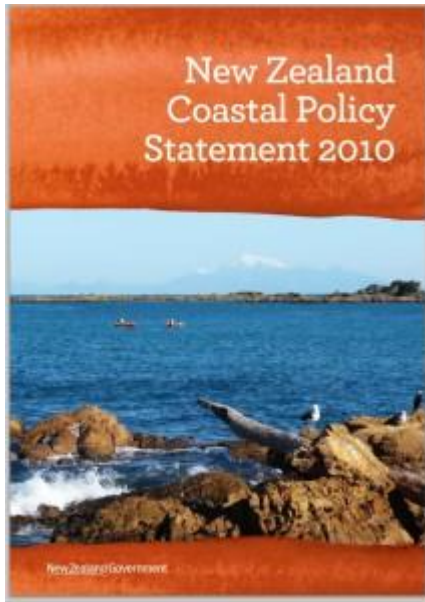
Who are you writing objectives for?

- Who cares?
- Who are you trying to affect?

What can you do about writing amazing objectives?

- Whatever you'd like!
 - Reflect on your values
- Be innovative
- Statutory fit – PT can advise on the boundaries and needs

Is this a good objective?

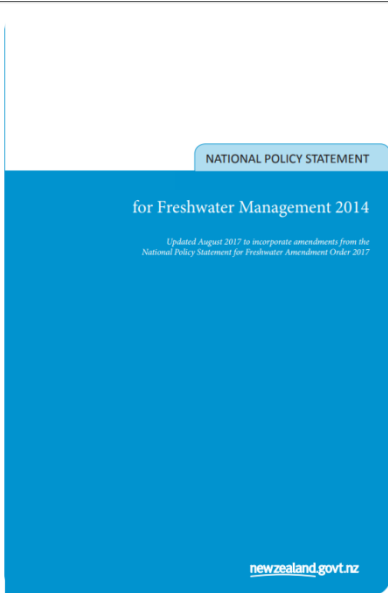


Objective 1

To safeguard the integrity, form, functioning and resilience of the coastal environment and sustain its ecosystems, including marine and intertidal areas, estuaries, dunes and land, by:

- maintaining or enhancing natural biological and physical processes in the coastal environment and recognising their dynamic, complex and interdependent nature;
- protecting representative or significant natural ecosystems and sites of biological importance and maintaining the diversity of New Zealand's indigenous coastal flora and fauna; and
- maintaining coastal water quality, and enhancing it where it has deteriorated from what would otherwise be its natural condition, with significant adverse effects on ecology and habitat, because of discharges associated with human activity

Is this a good objective?



Objective A2

The overall quality of fresh water within a freshwater management unit is maintained or improved while:

- a) protecting the significant values of outstanding freshwater bodies;
- b) protecting the significant values of wetlands; and
- c) improving the quality of fresh water in water bodies that have been degraded by human activities to the point of being over-allocated.

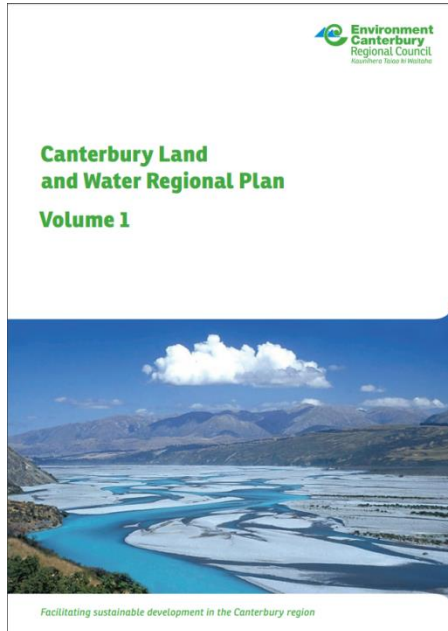
Is this a good objective?



Objective 1: Long-term restoration and protection of water quality for each sub-catchment and Freshwater Management Unit/Te Whāinga 1: Te whakaoranga tauroa me te tiakanga tauroa o te kounga wai ki ia riu kōawaawa me te Wae Whakahaere i te Wai Māori

By 2096, discharges of nitrogen, phosphorus, sediment and microbial pathogens to land and water result in achievement of the restoration and protection of the 80-year water quality attribute targets in Table 3.11-1.

Are these a good objectives?



3.15 Those parts of lakes and rivers that are valued by the community for recreation are suitable for contact recreation.

AND

3.24 All activities operate at good environmental practice or better to optimise efficient resource use and protect the region's fresh water resources from quality and quantity degradation.

Let's talk cascades

Value		Management actions
Mahinga kai		<p>Amount of water authorised to be allocated limit more</p>
		base at minimum
		age barriers are
		septic tank
	require stock	

Image source: <http://www.davidwallphoto.com/detail/44419-Purakaunui-Falls,-Catlins,-South-Otago,-South-Island,-New-Zealand.html>

Value	General objective	More specific objectives	Even more specific objective	Limits	Management actions
Mahinga kai	Taonga species are present in quantities, sizes and of a quality that is appropriate to enable mana whenua to provide manaaki	Habitat and water quality is provided to ensure a healthy tuna fishery	At MALF, habitat space is maintained to provide xx% protection level for tuna	Allocation limit xx L/s	Maximum amount of water authorised to be taken is allocation limit and no more
				Minimum flow xx L/s	Takes cease at minimum flow
			Fish passage is provided through all structures	NA	Fish passage barriers are removed
		Water quality is suitable for people to safely collect mahinga kai	E. coli levels are maintained at or below xxx cfu/100mL	xx <i>E. coli</i> cfu/100mL maximum	Improve septic tank compliance
					Rules to require stock exclusion

Workshop a cascade?

Value	General objective	More specific objectives	Even more specific objective	Limits	Management actions
The streams are safe for people to enjoy and undertake recreational activities	Improve water quality for human health				