

7 Ruamāhanga Whaitua

Minimum flows, minimum water levels and **core allocation** referred to in the Plan are interim to the extent that they will be reviewed by **whaitua** committees and may be amended by plan changes or variations following recommendations of **whaitua** committees.

7.1 Policies

In addition to policies on **minimum flows, minimum water levels** and **core allocation** that follow, policies in chapter 4 of the Plan also apply equally to **minimum flows, minimum water levels** and **core allocation** for the Ruamāhanga Whaitua.

Policy R.P1: Minimum flows and minimum water levels in the Ruamāhanga Whaitua

Minimum flows and **minimum water levels** in the Ruamāhanga Whaitua are:

- (a) for rivers (including **tributaries**), the **minimum flows** in Table 7.1, and
- (b) for rivers not in Table 7.1, 90% of the **mean annual low flow**, and
- (c) for Lake Wairarapa, the **minimum water level** in Table 7.2, and
- (d) for **natural lakes** (other than Lake Wairarapa), existing **minimum water levels**.

Policy R.P2: Core allocation in the Ruamāhanga Whaitua

The maximum amount of water available for allocation from rivers (including **tributaries**), Lake Wairarapa (including **tributaries**), and groundwater in the Ruamāhanga River catchment, above the Lake Wairarapa outflow, and in the Lake Wairarapa catchment, at the time an application is made for resource consent to take and use water, shall not exceed the **core allocation** for the applicable **water body** except for the taking and use of water identified in Policy P124 at flows above the **median flow**.

Policy R.P3: Cumulative effects on river reaches of allocating water

When allocating river water or **Category A groundwater** and **Category B groundwater**, regard shall be given to cumulative adverse effects on aquatic ecosystems in downstream river reaches as a result of flow depletion from loss of river water to groundwater.

7.2 Rules

If an activity is covered by more than one rule, then the rule that applies is the rule that is more specific for the relevant activity, area or resource. This does not apply where a proposal includes a number of activities which trigger separate specific rules. In that case, all rules are considered when assessing the proposal. An activity needs to comply with all relevant rules in the Plan, including those in Chapter 5.

Rule R.R1: Take and use of water in the Ruamāhanga Whaitua – restricted discretionary activity

The take and use of water from any river (including **tributaries**), Lake Wairarapa (including **tributaries**), and groundwater in the Ruamāhanga River catchment above the Lake Wairarapa outflow, and in the Lake Wairarapa catchment, that is not provided for in Rules R152, R153, R154, R155, R156, R157, or R159 is a restricted discretionary activity provided the following conditions are met:

- (a) the take and use shall not occur below the minimum flows or minimum water levels in Table 7.1 or 7.2, except that this condition does not apply to:
 - (i) water for the **health needs of people** as part of a **group drinking water supply** or **community drinking water supply** or water for rootstock protection, and
 - (ii) water used by industry from a **community drinking water supply** for a period of seven years from the date of 31 July 2015, and
 - (iii) taking groundwater, and
 - (iv) **water races** for the purpose of supplying water for the **health needs of people** and animal drinking water (including the minimum necessary to maintain the function of the **water race**), and

in any **catchment management unit** and **catchment management sub-unit** in Tables 7.3-7.5, the amount of water taken and used, in addition to all **existing resource consents**, does not exceed the **core allocation** for the applicable water body except that this condition does not apply to the take and use of water at river flows above the **median flow**, and
- (b) at flows above **median flow**:
 - (i) the frequency of **flushing flows** that exceed three times the **median flow** of the river is not changed, and

- (ii) for rivers (and their tributaries) listed in Table 1 of Schedule U no more than 50% of the portion of flow in the river above the median flow is taken at the point of abstraction, or
- (iii) for rivers (and their tributaries) listed in Table 2 of Schedule U no more than 10% of the total amount of flow in the river is taken at the point of abstraction, or
- (iv) for rivers (and their tributaries) not listed in either Tables 1 or 2 of Schedule U no more than 10% of the total amount of flow in the river at the point of abstraction.

Matters for discretion

1. The reasonable and efficient use of water, including the criteria in Schedule P (efficient use)
2. The timing, amount, and rate of taking of water; including instantaneous (L/sec), daily (m³/day), and seasonal requirements and duration and timing of peak daily take rate
3. For **group drinking water supplies** or **community drinking water supplies**, the amount and rate of water taken and used for the **health needs of people**
4. Reduction in the rate of take from surface water and **Category A groundwater and Category B groundwater** at times of low flow and restrictions when rivers approach or fall below the **minimum flows or water level**, including the guideline for stepdown allocation and flows in Schedule Q (stepdown guideline)
5. Effects due to local flow or water level depletion on wetlands, springs, or downstream river reaches in the same **catchment management sub-unit**
6. Interference effects on existing lawful water takes
7. Prevention of salt water intrusion into the **aquifer**, or landward movement of the salt water/fresh water interface
8. For a take and use from groundwater, the degree of connectivity and category according to Table 4.1
9. Preventing fish from entering water intakes
10. Measuring and reporting, including the guideline in Schedule R (measuring takes)
11. For **water races**, improvements to reduce any water loss through leakage

Rule R.R2: Taking and using water – discretionary activity

The take and use of water that is not provided for in Rules R152, R153, R154, R155, R156, 157 or R159 in the Ruamāhanga Whaitua from:

- (a) any river not in the Ruamāhanga River catchment, or
- (b) any river (or river reach) downstream of the confluence of the Ruamāhanga River and the Lake Wairarapa outflow, or
- (c) any lake other than Lake Wairarapa that is upstream of any river in the Ruamāhanga River catchment, or
- (d) any river at flows above the **median flow** that does not meet condition (c) of Rule R.R1

is a discretionary activity.

Rule R.R3: Taking and use of water that exceeds minimum flows, lake levels or core allocation – prohibited activity

The take and use of water from any river (including **tributaries**), Lake Wairarapa (including **tributaries**), or groundwater in Tables 7.3-7.5 in the Ruamāhanga River catchment that does not meet conditions (a) or (b) of Rule R.R1 is a prohibited activity.

Table 7.1: Minimum flows for rivers in the Ruamāhanga River and Lake Wairarapa catchments

River (shown in Figure 7.1)		Management point	Minimum flow (L/s)
Kopuaranga River upstream of the confluence with the Ruamāhanga River		Palmers	270
Waipoua River upstream of the confluence with the Ruamāhanga River		Mikimiki Bridge	250
Waingawa River upstream of the confluence with the Ruamāhanga River		Kaituna	1,100
Parkvale Stream upstream of the confluence with the Ruamāhanga River		Renalls Weir recorder	100
Mangatarere Stream	upstream of Belvedere Road Bridge	Gorge recorder	240
	Between the confluence with the Waiohine River and the Belvedere Road Bridge	Gorge recorder	200
Waiohine River upstream of the confluence with the Ruamāhanga River		Gorge recorder	2,300
Papawai Stream upstream of the confluence with the Ruamāhanga River		Fabians Road recorder	180
Upper and Middle Ruamāhanga River upstream of the confluence with the Waiohine River		Wardells	2,400

River (shown in Figure 7.1)	Management point	Minimum flow (L/s)
Otukura Stream upstream of the confluence with Dock/Stonestead Creek	Weir recorder	95
Tauherenikau River upstream of Lake Wairarapa	Gorge recorder	1,100
Lower Ruamāhanga River between the boundary with the coastal marine area and the Waiohine River confluence	Waihenga recorder	8,500

Table 7.2: Minimum lake levels and minimum water levels for Lake Wairarapa

Time period	Minimum lake levels at Burlings recorder	Minimum water levels
1 December to 29 February	10.15m	For the purpose of allocating water, minimum water levels in Lake Wairarapa shall be determined by: (i) minimum lake levels, and (ii) the minimum flow for the Tauherenikau River in Table 7.1, and (iii) no net decline in lake level over the preceding five days.
1 March to 31 May	10.00m	
1 June to 30 September	9.95m	
1 October to 30 November	10.00m	

Table 7.3: Surface water allocation amounts for rivers Category A groundwater and Category B groundwater in the Ruamāhanga River catchment above the Lake Wairarapa outflow

Catchment management unit ¹	Allocation amount ² (L/s)	Where existing consented allocation is greater than the allocation amount ³
Ruamāhanga River and tributaries , upstream of (but not including) the confluence with the Lake Wairarapa outflow, and all Category A groundwater and Category B groundwater (stream depletion) identified in the catchment management sub-units below in Table 7.3	7,430	

¹ When assessing surface water allocation, both the relevant catchment management unit and catchment management sub-unit must be considered

² This allocation amount has been derived as a default based upon one of two rules: for rivers with a mean flow of greater than 5,000 litres/sec, the allocation limit is equal to 50% of the natural seven-day mean annual low flow (7d MALF) and for rivers with a mean flow of less than 5,000 litres/sec, the allocation limit is equal to 30% of the 7d MALF.

³ As at 4 December 2020

Catchment management sub-units in the upper Ruamāhanga catchment¹ (shown in Figures 7.2 and 7.3)	Allocation amount² (L/s)	
Kopuaranga River and tributaries, Category A groundwater and Upper Ruamāhanga Category B groundwater (stream depletion)	180	
Waipoua River and tributaries, Category A groundwater and Upper Ruamāhanga or Waingawa Category B groundwater (stream depletion)	145	
Waingawa River and tributaries, Waingawa Category A groundwater and Taratahi or Waingawa Category B groundwater (stream depletion)	920	
Ruamāhanga River and tributaries upstream of the confluence with the Waingawa River, Upper Ruamāhanga Category A groundwater and Waingawa, Te Ore Ore or Upper Ruamāhanga Category B groundwater (stream depletion) , excluding all the above catchment management sub-units in the Ruamāhanga catchment (above this row in Table 7.3)	1,200	
Catchment management sub-units in the middle Ruamāhanga catchment¹ (shown in Figures 7.5, 7.6 and 7.7)	Allocation amount² (L/s)	
Parkvale Stream and tributaries, and Taratahi or Parkvale Category B groundwater (stream depletion)	40	Yes
Booths Creek and tributaries and Parkvale, Mangatarere or Taratahi Category B groundwater (stream depletion)	25	Yes
Mangatarere Stream and tributaries, Mangatarere Category A groundwater and Mangatarere Category B groundwater (stream depletion)	110	
Waiohine River and tributaries (excluding Mangatarere Stream and tributaries) Waiohine Category A groundwater and Mangatarere Category B groundwater (stream depletion)	1,590	
Papawai Stream and tributaries and Waiohine Category A groundwater	105	Yes
Ruamāhanga River and tributaries upstream of the confluence with the Papawai Stream, and Middle Ruamāhanga Category A groundwater excluding all the above catchment management sub-units in the Ruamāhanga catchment (above this row in Table 7.3)	1,240	
Catchment management sub-units in the lower Ruamāhanga catchment¹ (shown in Figure 7.8 and 7.9)	Allocation amount² (L/s)	
Huangularua River and tributaries and Huangularua Category A groundwater and Huangularua Category B groundwater (stream depletion)	110	
Lower Ruamāhanga River and tributaries upstream of (but not including) the confluence with the Lake Wairarapa outflow, and Lower Ruamāhanga Category A groundwater and Lake Category B groundwater (stream depletion) excluding all the above catchment management sub-units in the Ruamāhanga catchment (above this row in Table 7.3)	1,370	

Note: Where Category B groundwater is referred to in table 7.3, the calculated stream depletion effect (described in Table 4.1) is included in the surface water allocation for the relevant catchment management sub-unit, while the remainder is included in the groundwater allocation the relevant catchment management sub-unit.

Table 7.4: Surface water allocation amounts for rivers, Lake Wairarapa and Category A groundwater and Category B (stream depletion) groundwater in the Lake Wairarapa catchment

Catchment management unit ⁴ (shown in Figures 7.8 and 7.9)	Allocation amount ⁵ (L/s)	Where existing consented allocation is greater than the allocation amount ⁶
Lake Wairarapa and tributaries above the confluence of the Lake Wairarapa outflow with the Ruamāhanga River, and Tauherenikau Category A groundwater and Lake or Tauherenikau Category B groundwater (stream depletion)	1,800	
Catchment management sub-units ³ (shown in Figures 7.8 and 7.9)	Allocation amount ⁴ (L/s)	
Otukura Stream and tributaries above (but not including) the confluence with Dock/Stonestead Creek and Tauherenikau Category B groundwater (stream depletion)	30	Yes
Tauherenikau River and tributaries , and Tauherenikau Category A groundwater and Tauherenikau Category B groundwater (stream depletion)	410	

Note: Where **Category B groundwater** is referred to in Table 7.3 and Table 7.4, the calculated stream depletion effect (described in Table 4.1) is included in the surface water allocation for the relevant **catchment management sub-unit**, while the remainder is included in the **groundwater allocation** the relevant **catchment management sub-unit**.

⁴ When assessing surface water allocation, both the relevant catchment management unit and catchment management sub-unit must be considered

⁵ This allocation amount has been derived as a default based upon one of two rules: for rivers with a mean flow of greater than 5,000 litres/sec, the allocation limit is equal to 50% of the natural 7d MALF and for rivers with a mean flow of less than 5,000 litres/sec, the allocation limit is equal to 30% of the 7d MALF.

⁶ As at 4 December 2020

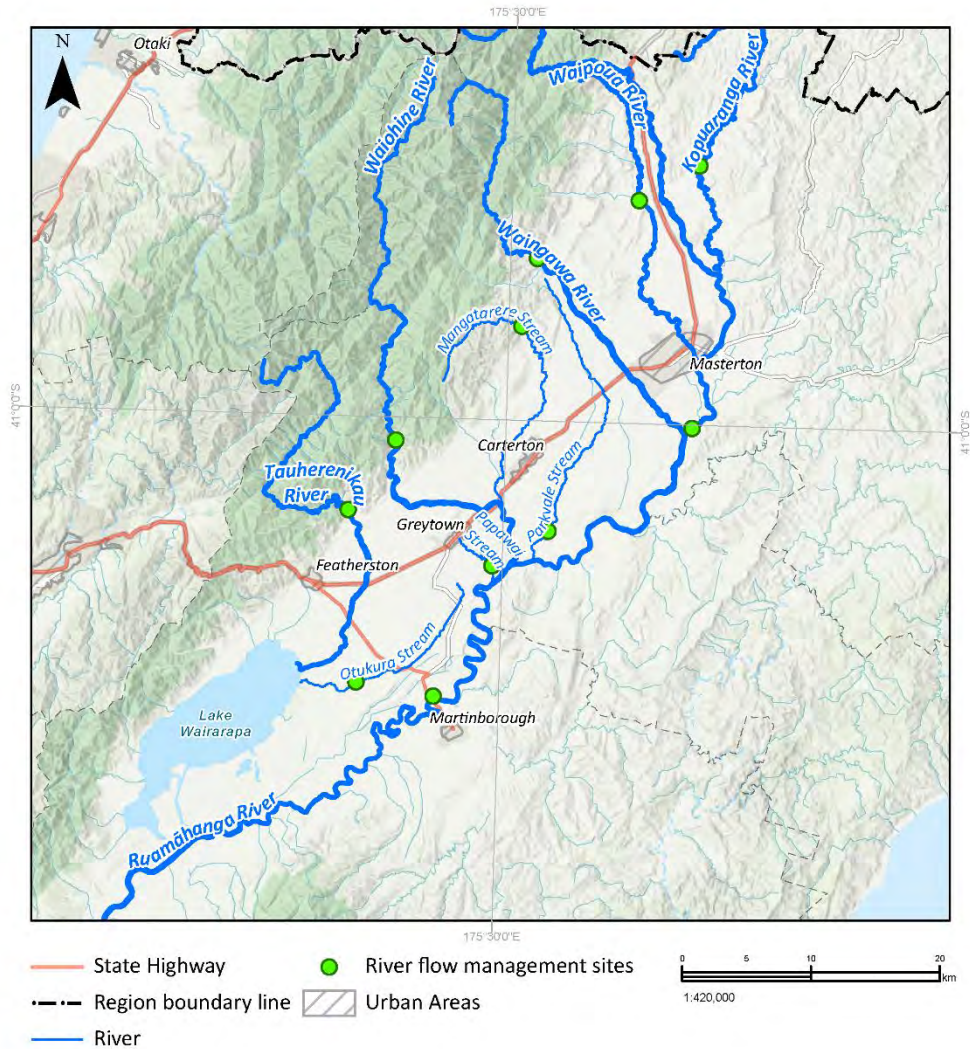
Table 7.5: Groundwater allocation amounts for Category B groundwater and Category C groundwater in the Ruamāhanga River catchment

Upper Ruamāhanga catchment management sub-units³ (shown in Figures 7.2, 7.3 and 7.4)	Allocation amount (m³/year)	Where existing consented allocation is greater than the allocation amount⁷
Te Ore Ore Category B groundwater	480,000	Yes
Waingawa Category B groundwater and Waingawa Category C groundwater	1,900,000	
Ruamāhanga Category B groundwater and Ruamāhanga Category C groundwater	3,550,000	
Middle Ruamāhanga catchment management sub-units³ (shown in Figures 7.5, 7.6 and 7.7)	Allocation amount (m³/year)	
Fernhill-Tiffen Category C groundwater	1,200,000	
Taratahi Category B groundwater and Taratahi Category C groundwater	1,400,000	
Parkvale Category B groundwater and Parkvale Category C groundwater	350,000 [unconfined] 1,550,000 [confined]	Yes
Mangatarere Category B groundwater and Mangatarere Category C groundwater	2,300,000	Yes
Lower Ruamāhanga catchment management sub-units³ (shown in Figures 7.8 and 7.9)	Allocation amount (m³/year)	
Tauherenikau Category B groundwater	6,600,000	Yes
Lower Ruamāhanga Category B groundwater	3,300,000	
Lake Category B groundwater and Lake Category C groundwater	6,750,000	Yes
Huangaaru Category B groundwater	650,000	Yes
Martinborough Category C groundwater	800,000	
Dry River Category B groundwater	650,000	
Onoke Category C groundwater	2,100,000	

⁷ As at 4 December 2020

Note: Where **Category B groundwater** is referred to in Table 7.5, the calculated stream depletion effect (described in Table 4.1) is included in the surface water allocation for the relevant **catchment management sub-unit**, while the remainder is included in the **groundwater allocation** the relevant **catchment management sub-unit**.

Figure 7.1: Rivers with minimum flows in the Ruamāhanga catchment in Table 7.1

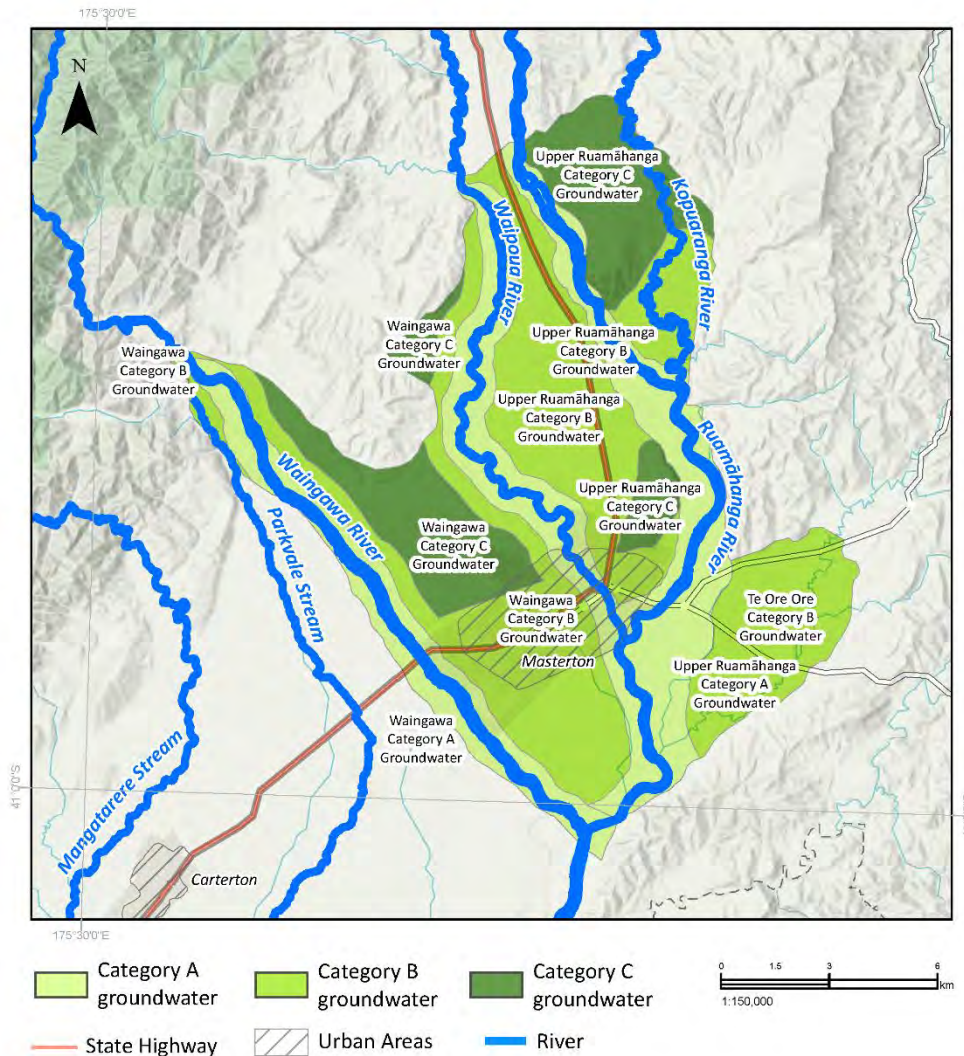


This version of the map is not complete. The version of this map available online through the online web map viewer shows the complete, detailed information on a GIS overlay that is not shown on this hard copy. The online version is available on the Council's website at <https://mapping.gw.govt.nz/gwrc/> (select theme Natural Resources Plan) and can be accessed from the Council offices or public library.

Copyright
 Basemap: Eagle Technology, GWRC & LINZ
 Topographic & Cadastral: LINZ, CoreLogic
 Projection: NZTM 2000



Figure 7.2: Upper Ruamāhanga catchment - rivers and groundwater (0-20m deep) in Tables 7.3 and 7.5

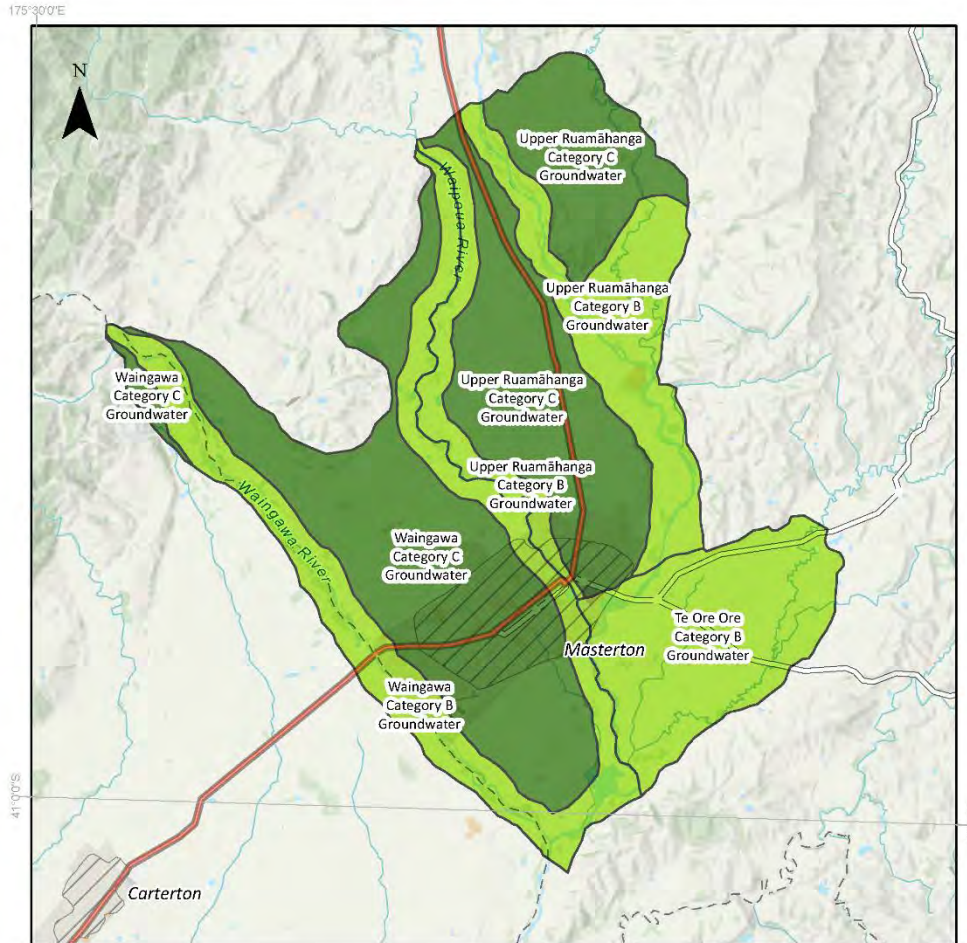


This version of the map is not complete. The version of this map available online through the online web map viewer shows the complete, detailed information on a GIS overlay that is not shown on this hard copy. The online version is available on the Council's website at <https://mapping.gw.govt.nz/gwrc/> (select theme Natural Resources Plan) and can be accessed from the Council offices or public library.

Copyright
 Basemap: Eagle Technology, GWRC & LINZ
 Topographic & Cadastral: LINZ, CoreLogic
 Projection: NZTM 2000



Figure 7.3: Upper Ruamāhanga - groundwater (20-30 metres deep) in Tables 7.3 and 7.5

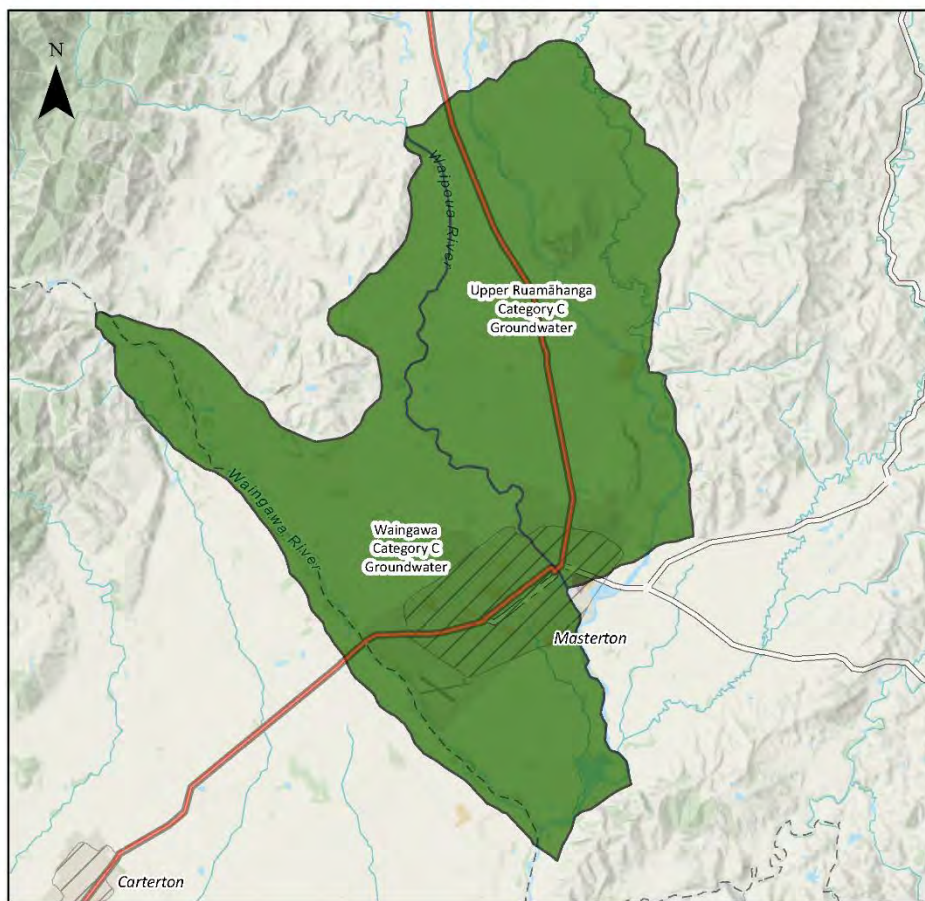


This version of the map is not complete. The version of this map available online through the online web map viewer shows the complete, detailed information on a GIS overlay that is not shown on this hard copy. The online version is available on the Council's website at <https://mapping.gw.govt.nz/gwrc/> (select theme Natural Resources Plan) and can be accessed from the Council offices or public library.

Copyright
 Basemap: Eagle Technology, GWRC & LINZ
 Topographic & Cadastral: LINZ, CoreLogic
 Projection: NZTM 2000



Figure 7.4: Upper Ruamāhanga catchment - groundwater (greater than 30 metres deep) in Table 7.5

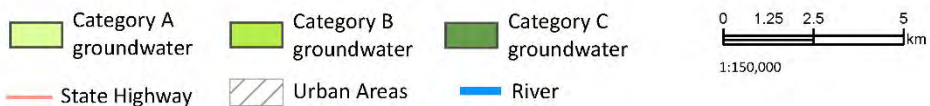
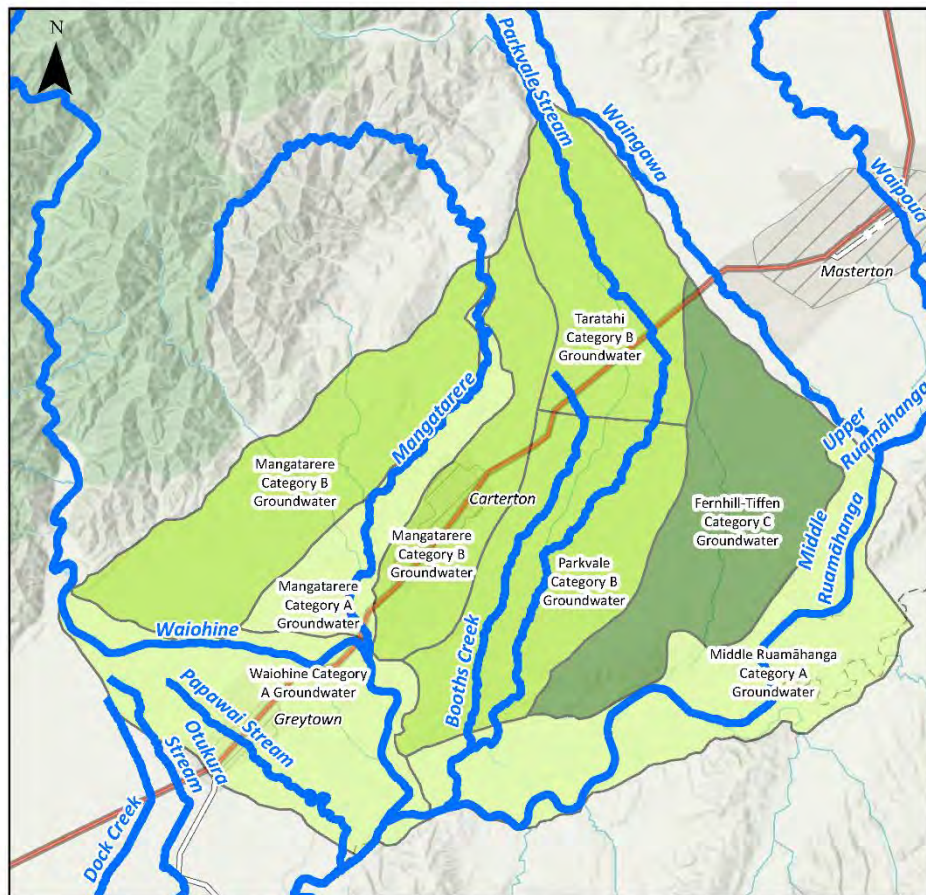


This version of the map is not complete. The version of this map available online through the online web map viewer shows the complete, detailed information on a GIS overlay that is not shown on this hard copy. The online version is available on the Council's website at <https://mapping.gw.govt.nz/gwrc/> (select theme Natural Resources Plan) and can be accessed from the Council offices or public library.

Copyright
 Basemap: Eagle Technology, GWRC & LINZ
 Topographic & Cadastral: LINZ, CoreLogic
 Projection: NZTM 2000



Figure 7.5: Middle Ruamāhanga catchment - rivers and groundwater (0-20 metres deep) in Tables 7.3 and 7.5

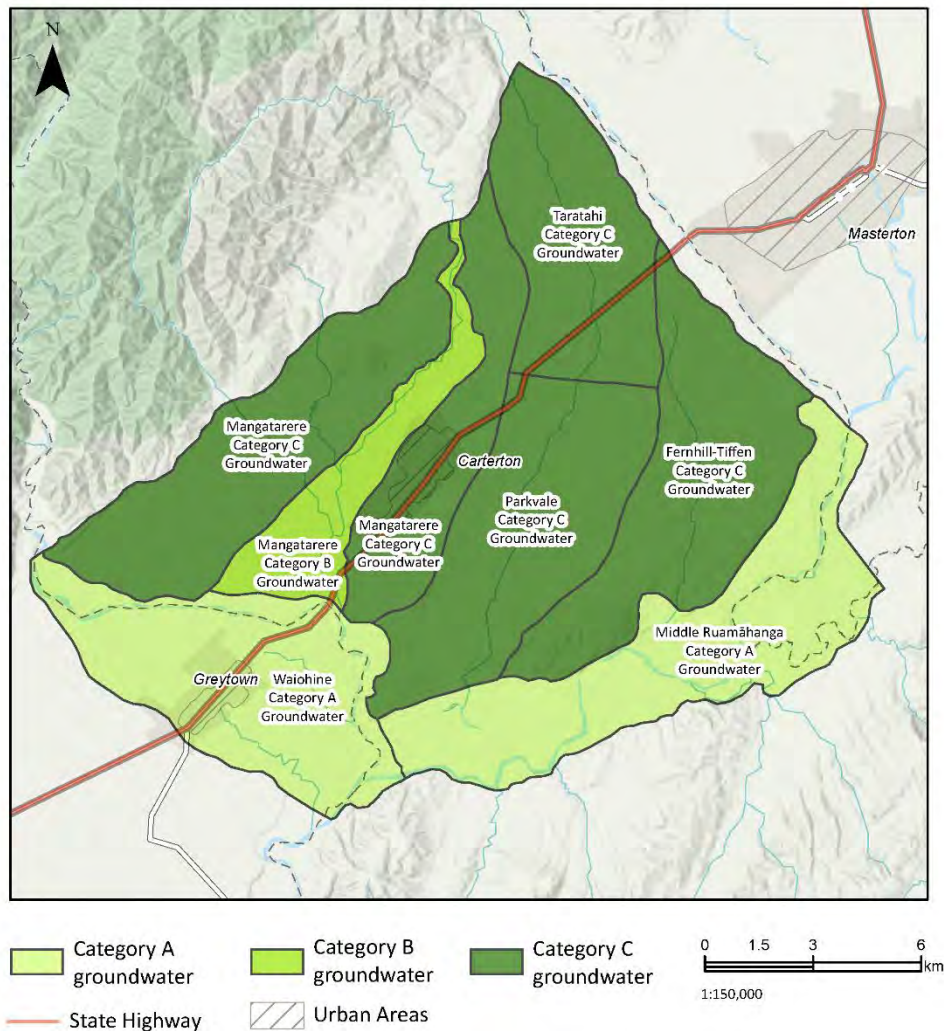


This version of the map is not complete. The version of this map available online through the online web map viewer shows the complete, detailed information on a GIS overlay that is not shown on this hard copy. The online version is available on the Council's website at <https://mapping.gw.govt.nz/gwrc/> (select theme Natural Resources Plan) and can be accessed from the Council offices or public library.

Copyright
 Basemap: Eagle Technology, GWRC & LINZ
 Topographic & Cadastral: LINZ, CoreLogic
 Projection: NZTM 2000



Figure 7.6: Middle Ruamāhanga - groundwater (20-30 metres deep) in Tables 7.3 and 7.5

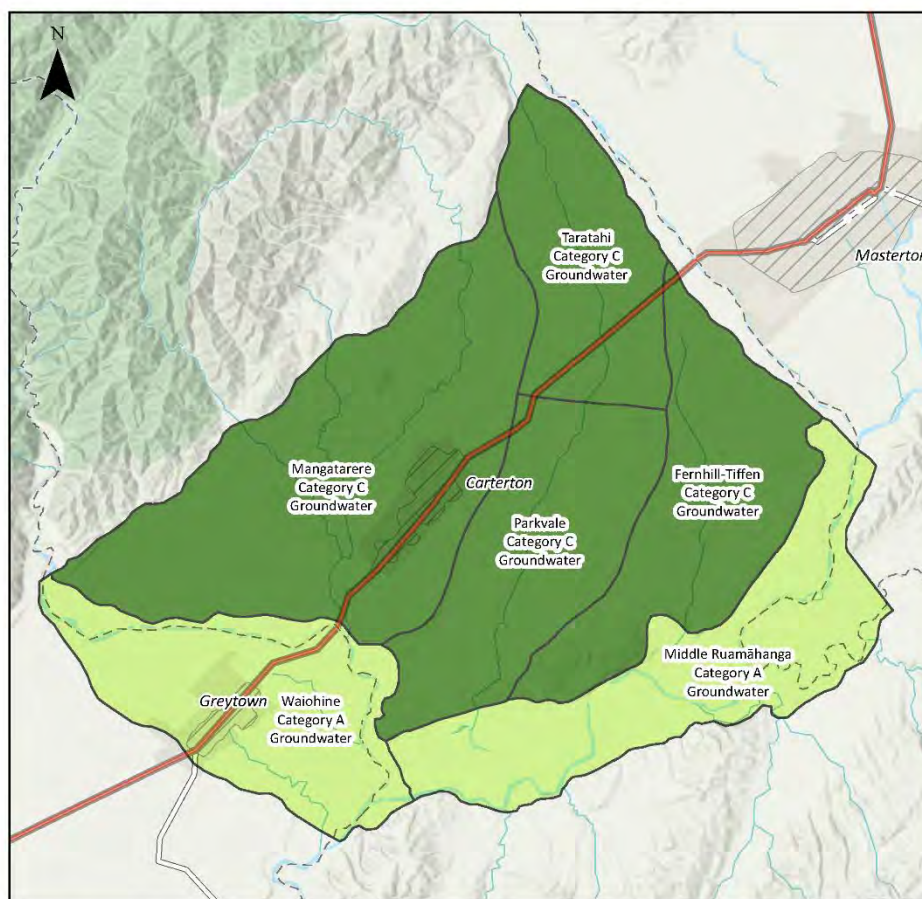


This version of the map is not complete. The version of this map available online through the online web map viewer shows the complete, detailed information on a GIS overlay that is not shown on this hard copy. The online version is available on the Council's website at <https://mapping.gw.govt.nz/gwrc/> (select theme Natural Resources Plan) and can be accessed from the Council offices or public library.

Copyright
 Basemap: Eagle Technology, GWRC & LINZ
 Topographic & Cadastral: LINZ, CoreLogic
 Projection: NZTM 2000



Figure 7.7: Middle Ruamāhanga catchment - groundwater (greater than 30 metres deep) in Tables 7.3 and 7.5



- Category A groundwater
- Category C groundwater
- State Highway
- Urban Areas

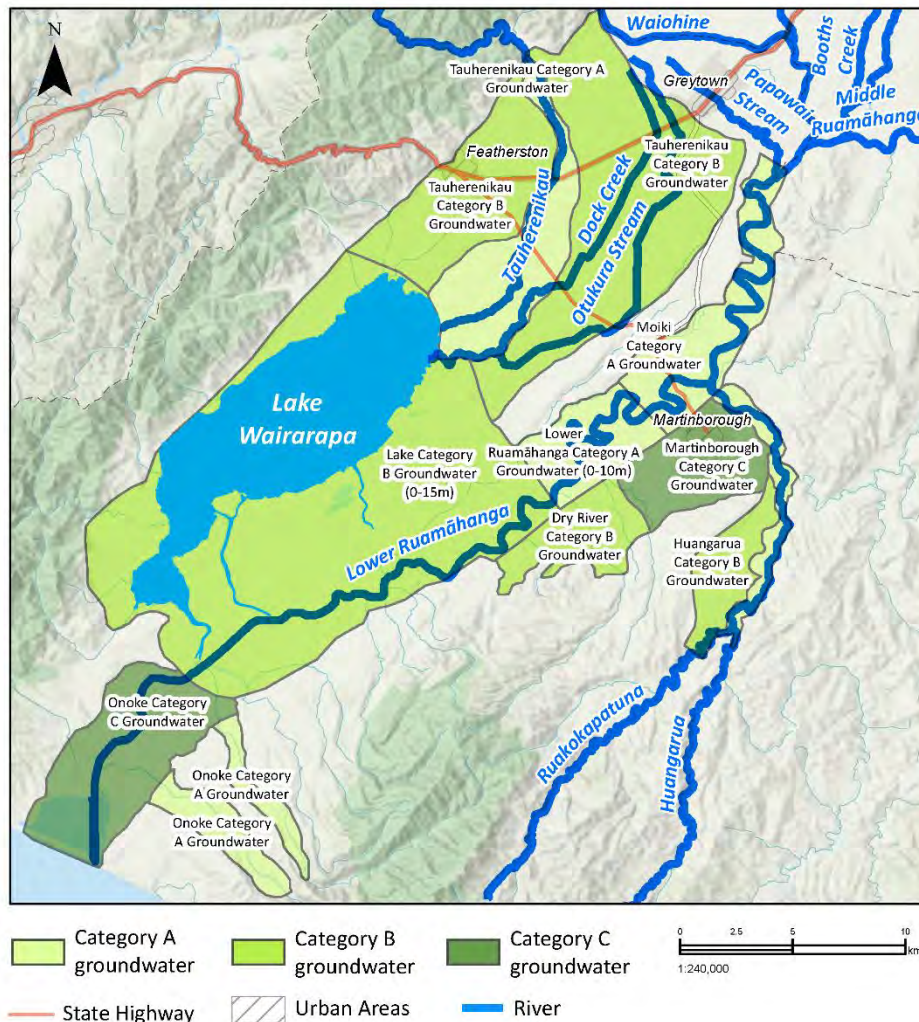
0 2 4 8
1:150,000 km

This version of the map is not complete. The version of this map available online through the online web map viewer shows the complete, detailed information on a GIS overlay that is not shown on this hard copy. The online version is available on the Council's website at <https://mapping.gw.govt.nz/gwrc/> (select theme Natural Resources Plan) and can be accessed from the Council offices or public library.

Copyright
Basemap: Eagle Technology, GWRC & LINZ
Topographic & Cadastral: LINZ, CoreLogic
Projection: NZTM 2000



Figure 7.8: Lower Ruamāhanga catchment - rivers and groundwater (0-20 metres deep unless specified) in Tables 7.3, 7.4 and 7.5

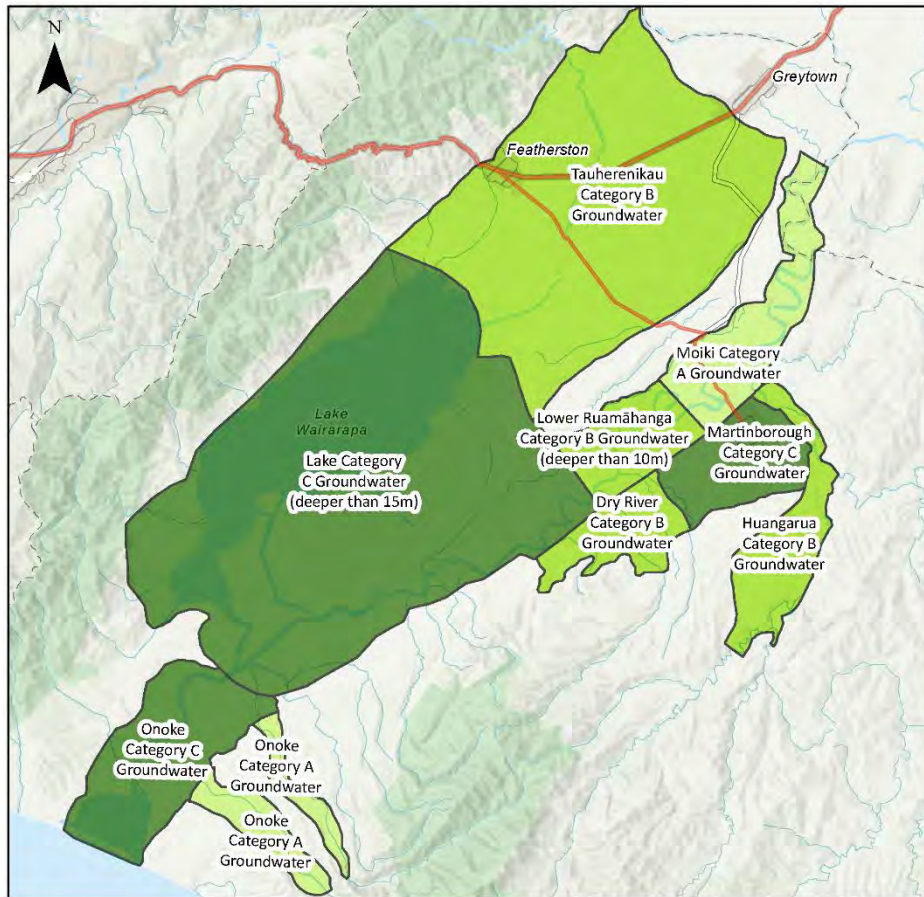


This version of the map is not complete. The version of this map available online through the online web map viewer shows the complete, detailed information on a GIS overlay that is not shown on this hard copy. The online version is available on the Council's website at <https://mapping.gw.govt.nz/gwrc/> (select theme Natural Resources Plan) and can be accessed from the Council offices or public library.

Copyright
 Basemap: Eagle Technology, GWRC & LINZ
 Topographic & Cadastral: LINZ, CoreLogic
 Projection: NZTM 2000



**Figure 7.9: Lower Ruamāhanga catchment - groundwater
(greater than 20 metres deep unless specified)
in Tables 7.3, 7.4 and 7.5**



This version of the map is not complete. The version of this map available online through the online web map viewer shows the complete, detailed information on a GIS overlay that is not shown on this hard copy. The online version is available on the Council's website at <https://mapping.gw.govt.nz/gwrc/> (select theme Natural Resources Plan) and can be accessed from the Council offices or public library.

Copyright
 Basemap: Eagle Technology, GWRC & LINZ
 Topographic & Cadastral: LINZ, CoreLogic
 Projection: NZTM 2000

