



# Future Development Strategy

For RPS hearing - 2<sup>nd</sup> October

Wellington  
Regional Leadership Committee

## What we'll cover today

- Who is WRLC?
- How the FDS fits with RPS
- Key results from the Housing and Business Assessment
- Draft FDS Overview
- Next Steps



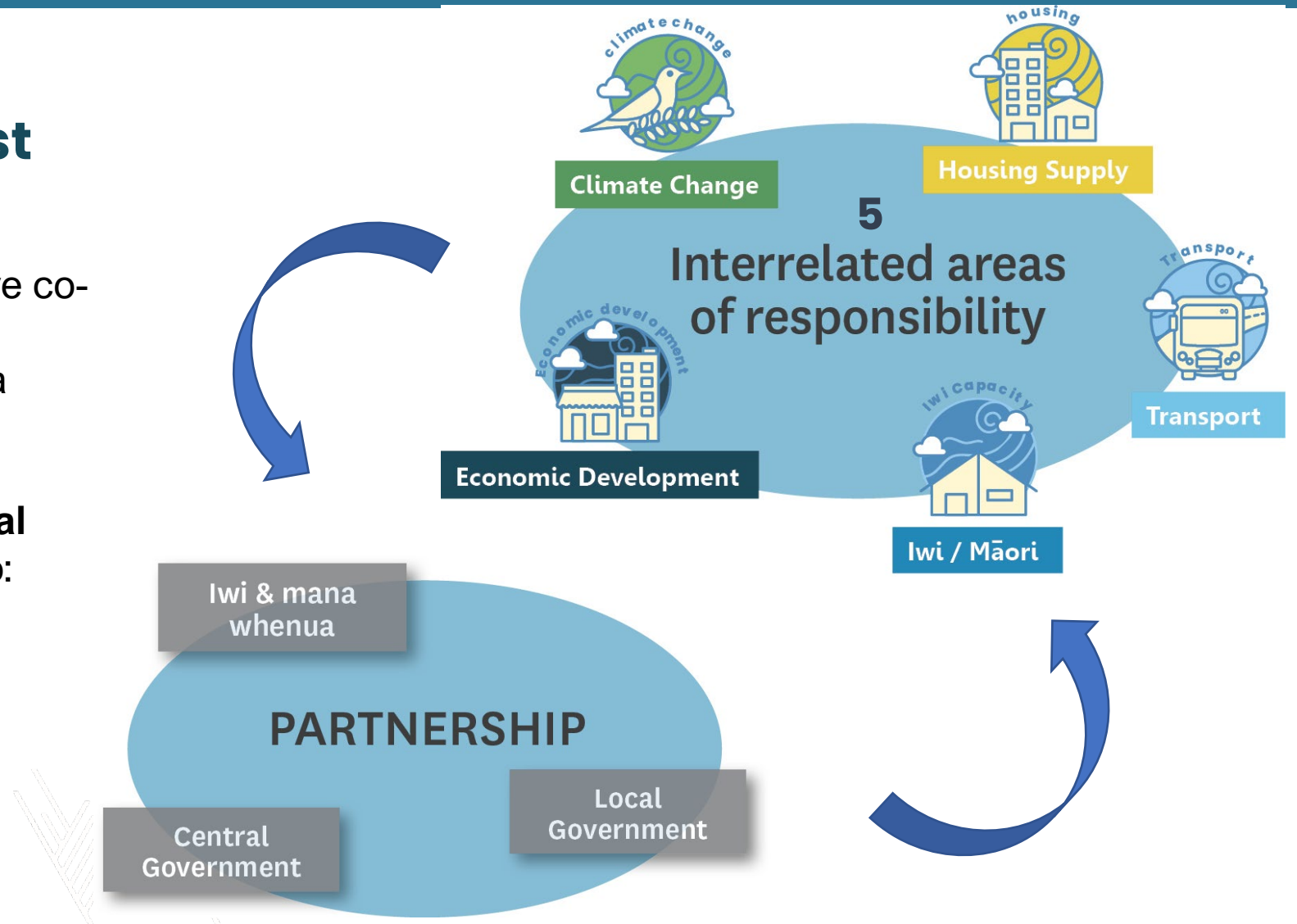
# WHO ARE WE?

## WRLC – Aotearoa’s largest joint committee

**Urban Growth Agenda (UGA):** improve co-ordination and alignment between central government, councils and mana whenua in high growth urban areas.

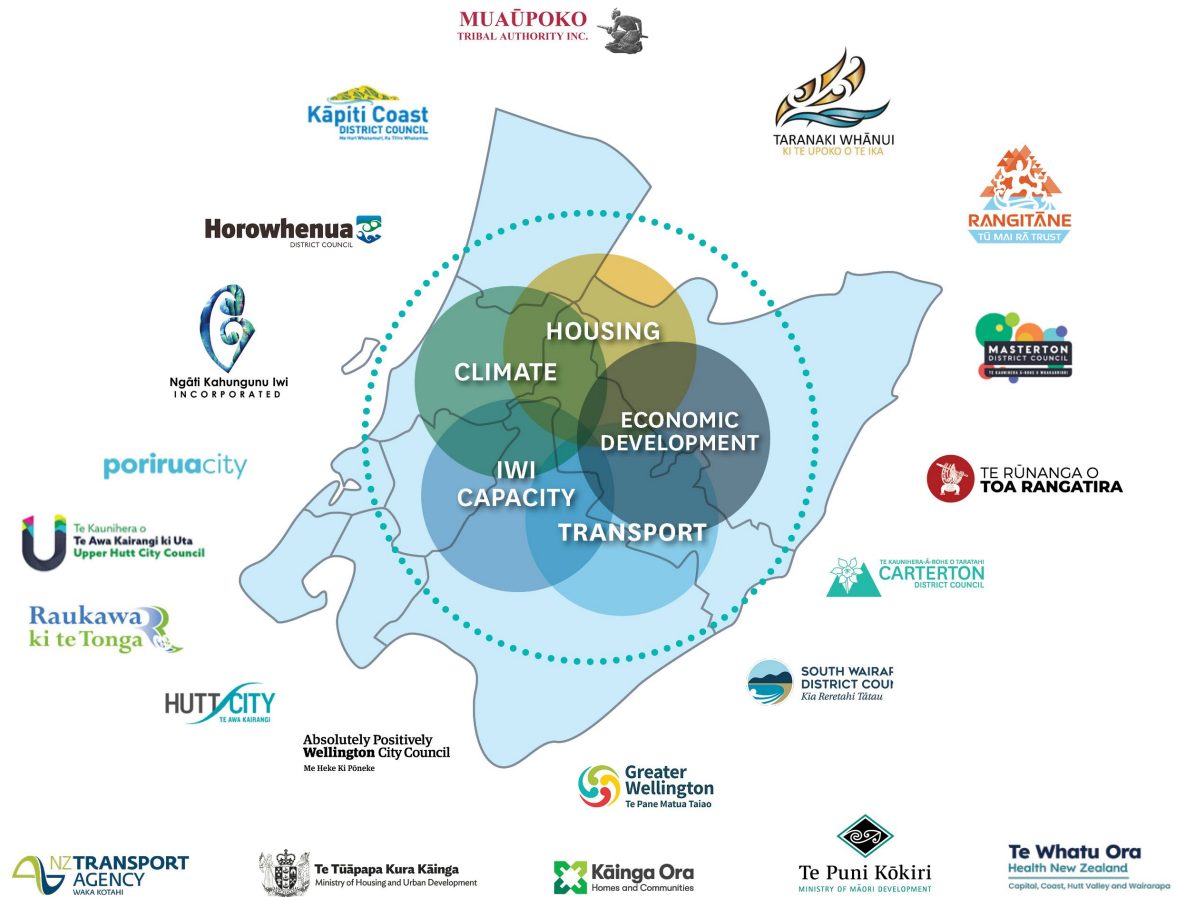
WRLC brings together **local and central government and iwi organisations**, to:

- progress our big challenges
- build shared responsibility
- unlock our future potential
- to ensure how we work today, builds a better tomorrow.

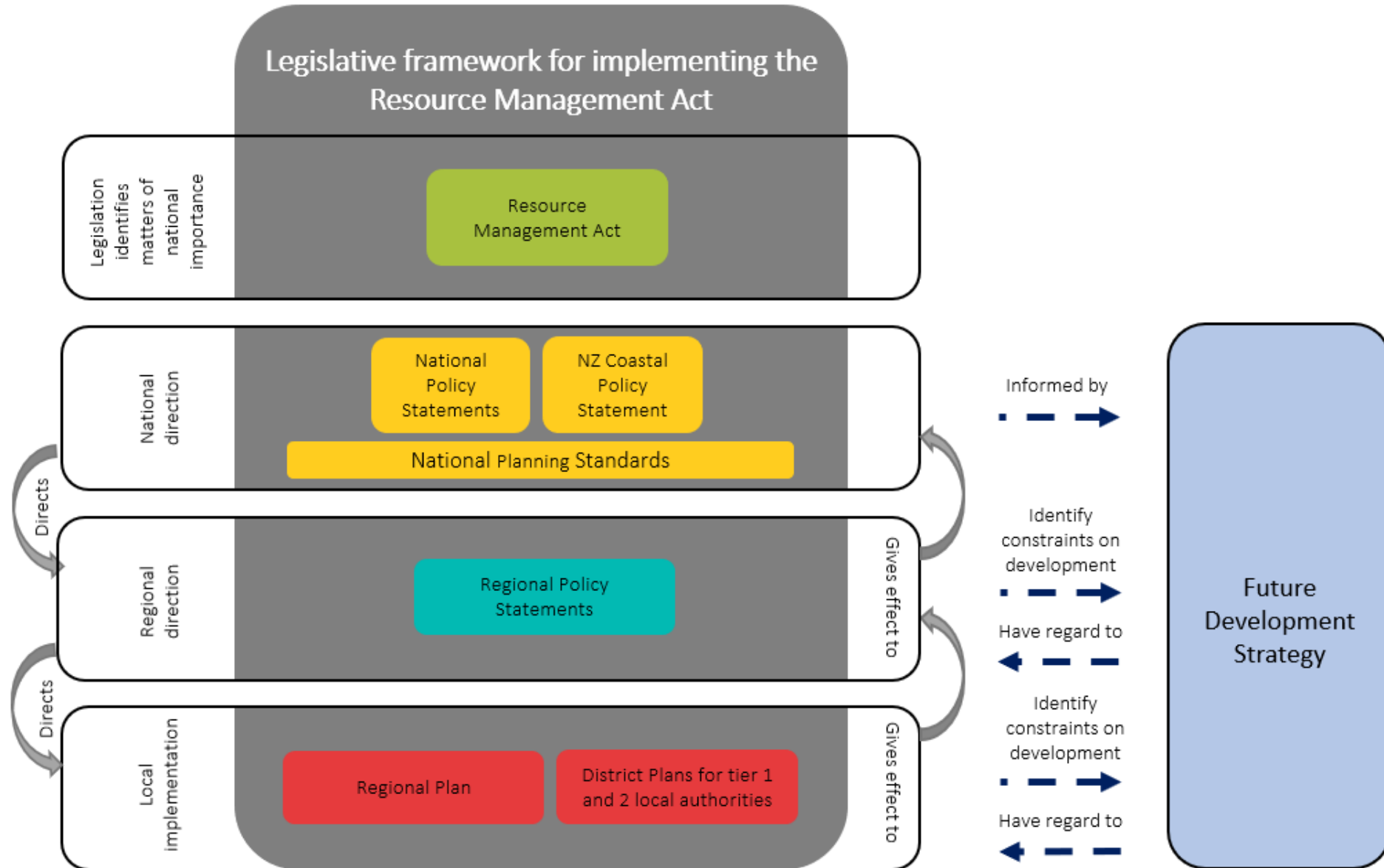


# PARTNERS

<b>MANA WHENUA</b>	Port Nicholson Block Settlement Trust	Ngāti Kahungunu Ki Wairarapa Tāmaki Nui-A-Rua Settlement Trust	Raukawa ki te Tonga	Te Rununga o Toa Rangitira	Rangitāne Tu Mai Ra Trust	Muaupoko Tribal Authority
<b>LOCAL GOVERNMENT</b>	Kapiti Coast DC	Carterton DC	Hutt City Council	South Wairarapa DC	Wellington City Council	
	Porirua DC	Masterton DC	Upper Hutt City Council	Horowhenua DC	GW Regional Council	
<b>CENTRAL GOVERNMENT</b>	MHUD	Waka Kotahi	Kāinga Ora	Min of Transport	Min of Education	Te Puni Kōkiri
						Te Whatu Ora



# How the FDS fits with RPS?





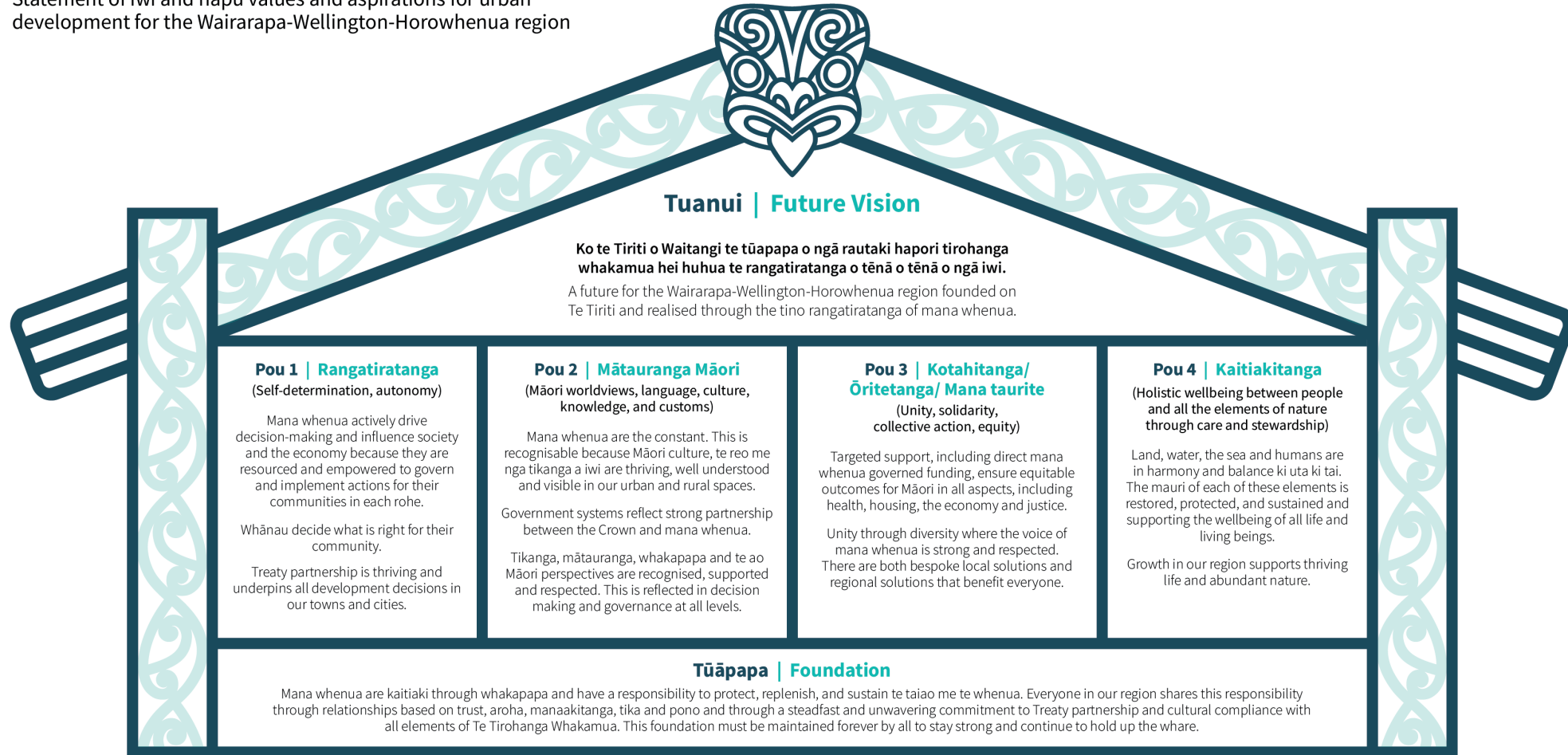
# Future Development Strategy Process





# Te Tirohanga Whakamua

Statement of iwi and hapū values and aspirations for urban development for the Wairarapa-Wellington-Horowhenua region



**Kōkiri 1**

Growth supports Treaty partnership and is directed towards benefits for all people in the region, and has a positive cumulative impact. It is recognised that all areas of change are interrelated.

**Kōkiri 2**

There is movement away from a linear economy model and towards a circular approach, and development is informed by nature-based solutions wherever possible.

**Kōkiri 3**

When planning for growth, the environment comes first, and growth should only occur where it creates positive environmental outcomes and is in tune with nature and the biodiversity of the region.

**Kōkiri 4**

Planning focuses on decolonisation, removing barriers that iwi face and setting us up to respond to our challenges independently.

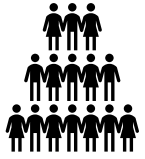
**Kōkiri 5**

Investment is directed toward reducing inequality and growing healthy economic opportunities for Māori communities, and funding distribution empowers mana whenua with what is needed in each rohe.

**Kōkiri 6**

The children of today are equipped with the information, tools and knowledge they need for the future of tomorrow, including climate change and natural disaster planning.

# What are we planning for?



200,000 additional people



99,000 more homes



Greater supply of business and industrial land



New community services and amenities in accessible locations



New and upgraded infrastructure to meet our current and growing needs



The region becoming more climate and natural hazard resilient



## **HBA is a point in time document**

### **Business Land**

- Increase in hectares of additional business land required by local council
- Retail and commercial activity can be accommodated within intensified business districts
- Industrial land a challenge – need 2x Seaview/Gracefields
- Need to consider future industrial land locations – and what industrial might look like in the future – a separate project is underway to this effect

## Housing

- We have plenty of capacity for housing – over 206,000 homes
- Building density outside of Wellington, Porirua and the Hutt more challenging from an economics perspective
- Need to incentive in locations and types to meet our objectives
- Infrastructure investment will need to match housing growth



# Our Strategic Direction

## VISION

**Mō ā tātou uri. Ko tā te Rautaki Whakawhanake Anamata a Wairarapa-Te Whanganui a Tara-Horowhenua he whakatutuki i ngā hiahia o nāiane me te aha ka kore ngā uri whakaheke e raru ki te whakatutuki i ō rātou ake hiahia. Ko te Tiriti o Waitangi te tūapapa o ngā rautaki hapori tirohanga whakamua hei huhua te rangatiratanga o tēnā o tēnā o ngā iwi.**

Let's be responsible ancestors. The Wairarapa-Wellington-Horowhenua Future Development Strategy will provide for growth that is sustainable by meeting the needs of the present without compromising the ability of future generations to meet their own needs. The future for our region is founded on Te Tiriti o Waitangi and realised through the tino rangatiratanga of tangata whenua

## STRATEGIC DIRECTION



Providing for affordable housing that meets our needs, and for compact well-designed towns and cities



Realising iwi and hapū values and aspirations



Promoting a flourishing zero-emissions region



Protecting what we love



Ensuring we have the infrastructure we need to thrive



Providing opportunity for productive, and sustainable local employment

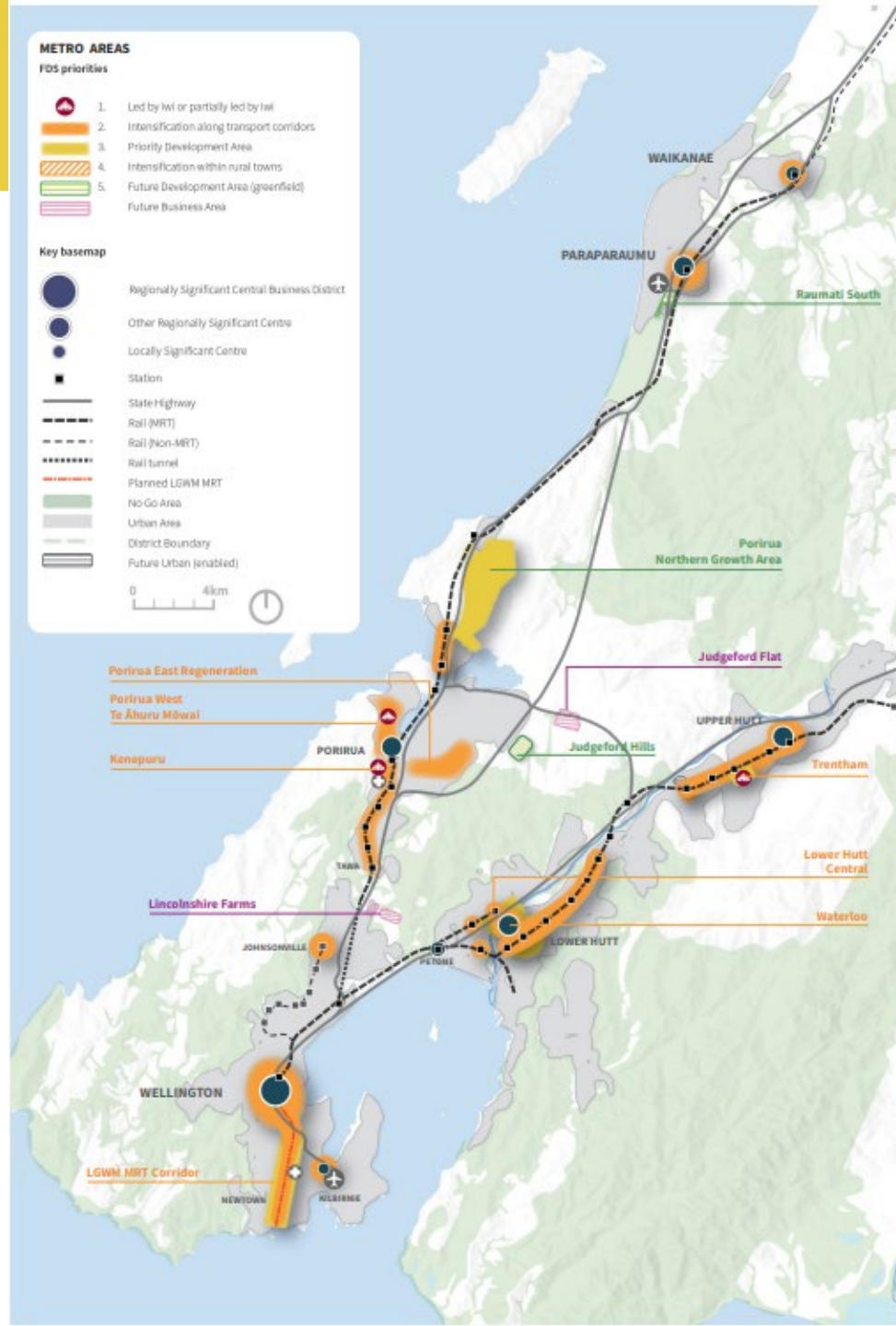
# Our priorities

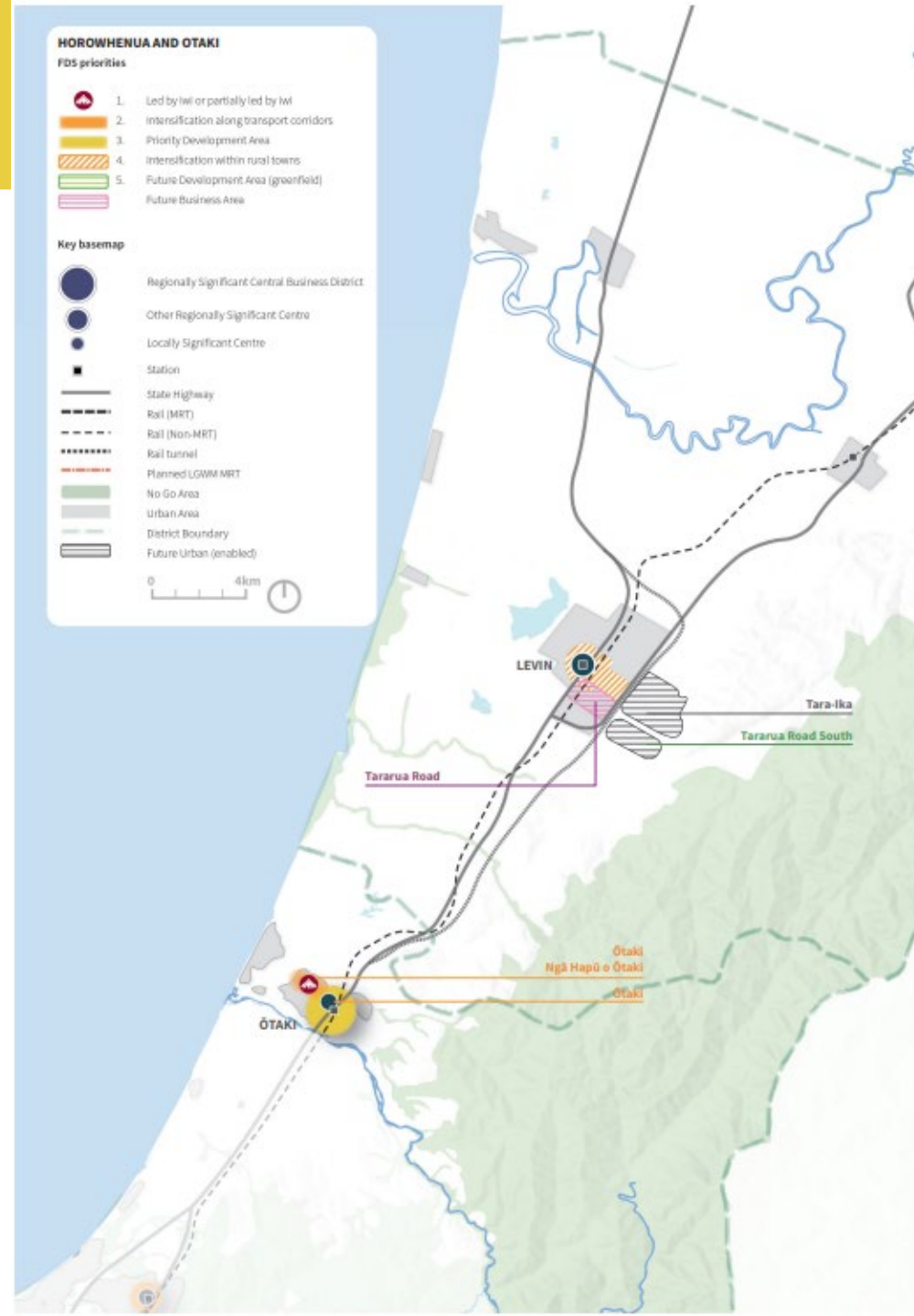
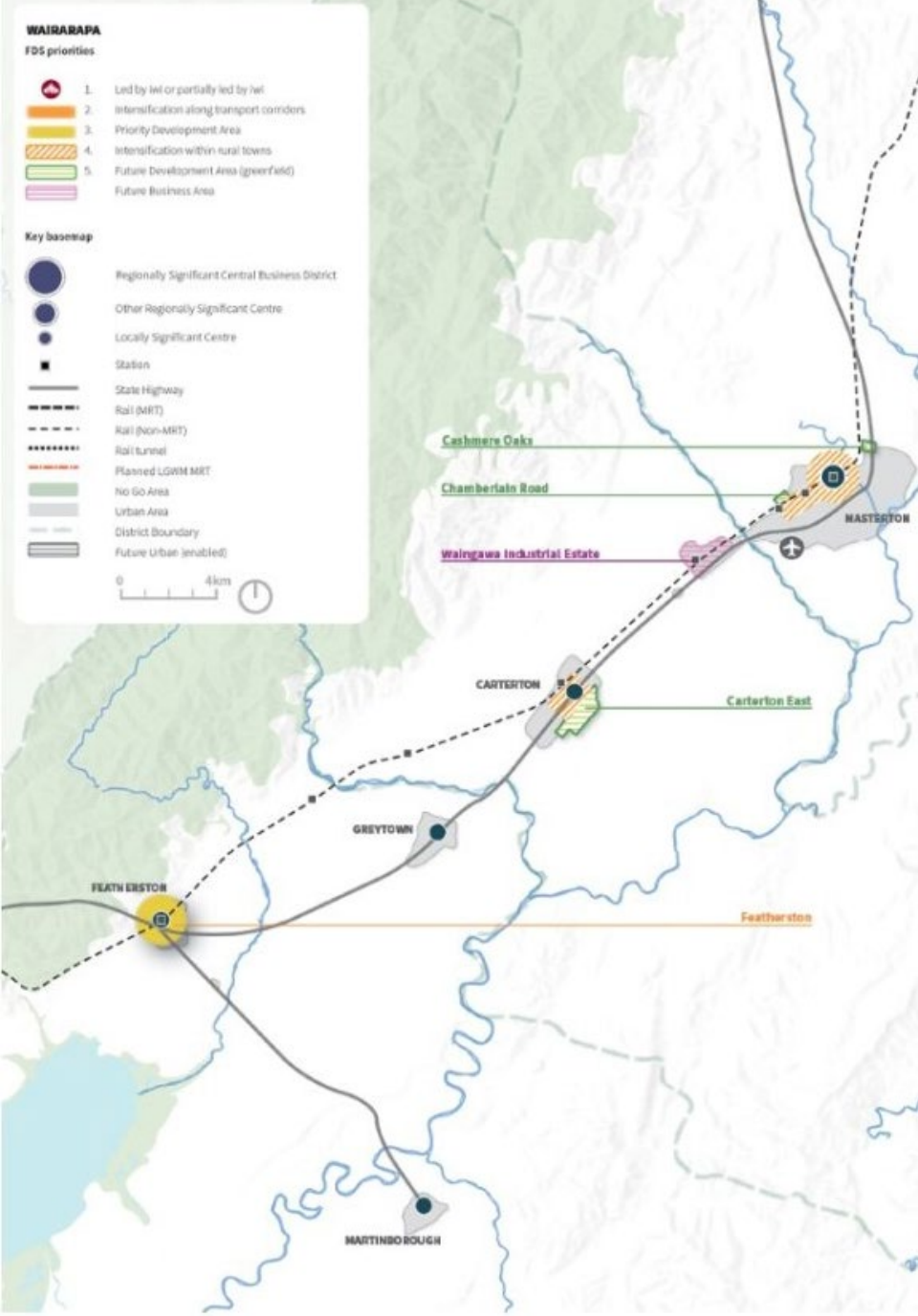
We will prioritise well designed, well-functioning urban environments in the region's towns and cities in this order:

1. Areas of importance to iwi for development.
2. Areas along strategic public transport network corridors with good access to employment, education and 'active mode connections' such as walking, cycling, scootering and skateboarding.
3. Within 'Priority Development Areas'
4. Within existing rural towns around current and proposed public transport nodes and strategic active mode connections.
5. Greenfield developments that are well connected to existing urban areas in our towns and cities and can be easily serviced by existing and currently planned infrastructure, including by public and active transport modes, and where the location and design would maximise climate and natural hazard resilience.

The Future Development Strategy does not support development that does not meet these priorities.



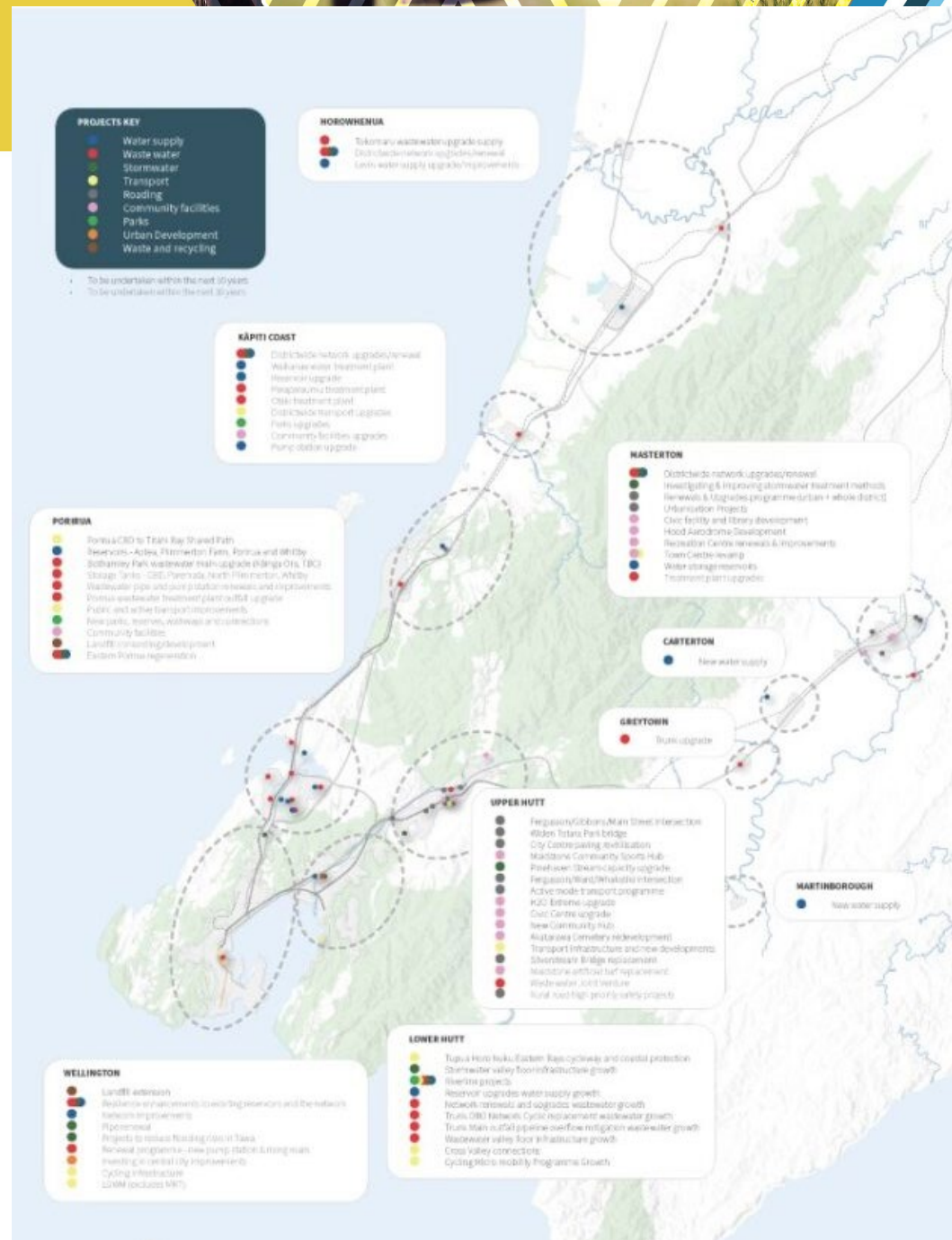






# How?

Infrastructure key to getting development where we want it



# Next Steps



## October

Public Consultation (1  
Month from 9<sup>th</sup> October)



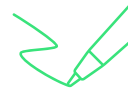
## November

Summarise submissions  
prepare hearing report (by  
30<sup>th</sup> Nov)



## December

Hearings/Deliberations –  
week of 11<sup>th</sup> December



## January

Update FDS and  
Implementation Plan with  
any changes



## February

Workshop with TA's, CG,  
WRLC, Iwi to socialize  
revised FDS



## March

Endorsement of final FDS  
and Implementation Plan





He waka eke noa *We are all in this together*

I orea te tuatara ka puta ki waho

*A problem is solved by continuing to find solutions*

mahi tahi | *to work together, collaborate, cooperate.*

