

If you can't call for help no-one can rescue you

Take two forms of communication.

Wgtn navigational bylaws require every person must carry at least 2 x forms of effective water proof communication.



Diver Down?

If you are diving from a boat, or are the skipper of a boat with a diver down, you must ensure that Flag A is displayed high enough that it can be clearly identified by other boats from a distance of at least 200 metres. (bylaw 3.4)

Any free shore diver intending to go more than 200 metres from shore is required to tow a distinctive float and flag.

Any scuba diver intending to go more than 200 metres from shore should take an inflatable surface marker buoy than can be deployed upon surfacing to indicate position

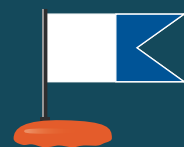
SEE A FLOAT – SLOW YOUR BOAT

If you see this flag you must slow down to 5 knots within 200 metres (the length of 2 football fields)



Code Flag A - Min size, 600 x 600mm

Smaller spear fishing floats identify snorklers



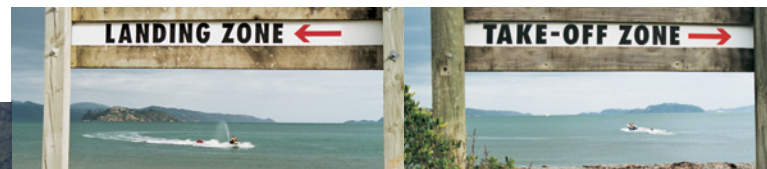
=



It takes 3 to ski

Any vessel (including a jet ski) towing a person on a wakeboard, biscuit, skis or anything else must have an observer (over 10 years old) watching the person being towed.

Always travel in and out of a water-ski lane on your starboard (right) side.



How to make a Voyage or Trip Report

Often called a TR, here is how to make a Trip report with Maritime Radio or your local Coast guard unit.

Listen to the station for approx. 10 seconds, check there is no-one else using the frequency.

1. Make a call using the VHF Channel 16.
2. **WGTM MARITIME RADIO** x 3
YOUR VESSEL NAME AND CALL SIGN x 3.
3. **WISHING TO MAKE A 'TR'**
4. Wait for Wellington Maritime Radio to acknowledge your call and follow their instructions, which may be to change to Channel 71.
5. Repeat your **VESSEL NAME AND CALL SIGN**.
6. Your **PLACE OF LAUNCHING**.
7. **NUMBER OF PEOPLE ON BOARD**.
8. **ESTIMATED TIME OF RETURN**.
9. **OVER**.
10. Wait for confirmation from Wellington Maritime Radio.
11. **VESSEL NAME** and **OUT**.
12. Change back to Channel 16.

Remember to cancel your TR when you have arrived safely.

Note: Failing to close a TR will NOT initiate a search. If you need assistance you must call for help

Might is right

Any vessel under 500 gross tonnage must give way to any vessel over 500 gross tonnage in Wellington Harbour.



Wellington Harbour radio (Beacon Hill) 24hr service

T 04 473 4547

T 04 388 1911

Marine VHF Channels 14,16,04,62

- Shipping information
- Marine oil spills
- Recreational boating concerns

KNOW BEFORE YOU GO

HARBOURS QUICK REFERENCE GUIDE



Purpose: These Bylaws are made for the purpose of ensuring maritime safety in the Wellington Region.

HARBOURMASTER

harbours@gw.govt.nz 04 830 4160 After hours 04 388 5470



Wellington Marine VHF Radio Channels



How to make a distress call

Use only if you are in imminent danger and need immediate help!

Activate the distress beacon if carried. Make sure everyone is wearing lifejackets.

Switch radio to full power; follow these instructions:

1. VHF Ch 16.
2. **MAYDAY MAYDAY MAYDAY.**
3. This is **YOUR VESSEL NAME** (THREE TIMES).
4. Call sign **OF THE VESSEL** (ONCE).
5. **MAYDAY VESSEL NAME AND CALL SIGN.**
6. Vessel's location.
7. Nature of distress and assistance required.
8. Any other information e.g. number of persons on board, description of vessel, liferaft or dinghy carried.
9. **OVER.**
10. Allow a short time for a reply. If no reply, repeat the distress call, working through all the distress frequencies on the radio. If contact is made with a shore station, tell them if you have activated your distress beacon and follow their instructions.

Don't leave shore without one

Wellington Regional Navigational and Safety Bylaws require you to carry lifejackets of appropriate sizes for everybody on board your boat.



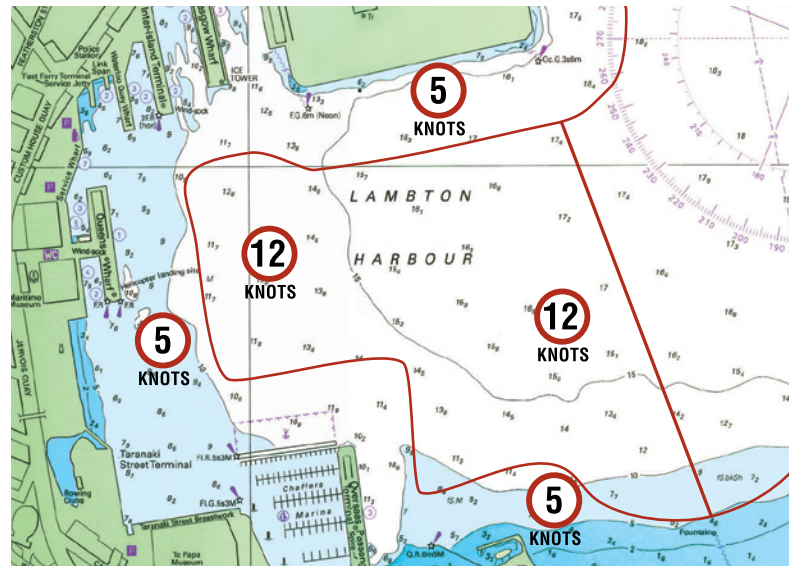
Have one for everyone and wear them.

Slow down

Speed of craft must not exceed 5 knots when within:

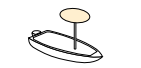
- 50 metres of another vessel, raft or person in the water
- 200 metres of shore or structure (2 football fields), or the inshore side of any row buoys marking that distance from shore
- 200 metres of any vessel or raft flying Flag A (Diving Flag)

No vessel shall exceed a speed of 12 knots in the Lambton Harbour area (as shown on map).



Can you be seen?

Navigation lights must be shown from sunset to sunrise, and during conditions of restricted visibility.



Boats of less than 7 metres length and not capable of more than 7 knots including kayaks and paddlecraft may carry navigation lights or simply display an all-round white light.



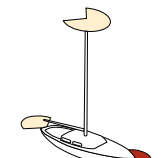
Powerboats, underway, less than 12 meters in length may combine their stern and masthead lights into a single all-round white masthead light. The boat should also have red and green sidelights.



Powerboats greater than 12 metres in length should show a white masthead light, red and green side lights and a white stern light.



Sailing boats, underway, (not using power) must show sidelights and a stern light. These may be combined into a tri-colour lantern at the top of the mast on vessels less than 20 metres in length.

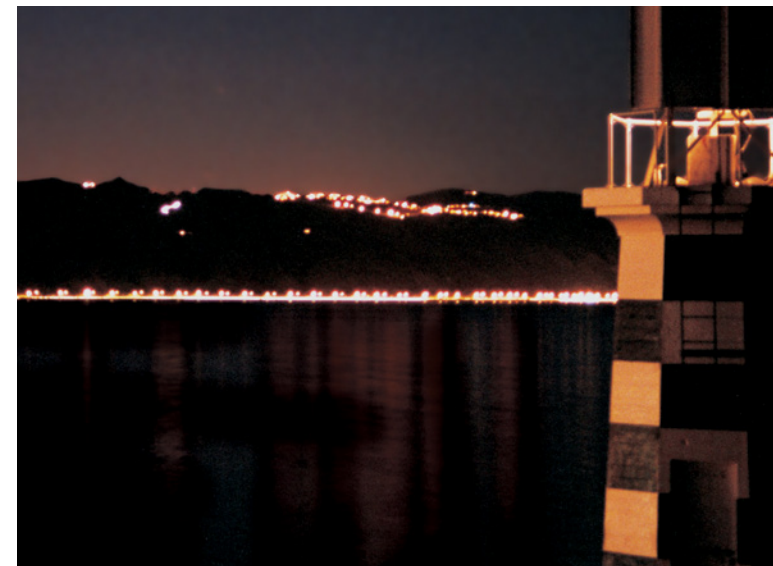


Sailing boats under auxiliary motor power should display their sidelights and stern light as well as a masthead light. You should not use a tri-colour lantern when motoring.

Who else is out there?

If you are on Wellington Harbour at night we recommend that you have a VHF radio listening on channel 14.

If you intend to pass through the harbour entrance at night you are required to call Wellington Harbour Radio on **VHF Channel 14** and let them know who you are and where you are going.



Mobile phone use:
Emergency Call 111 and ask for the police.
Coastguard *500 (Non urgent) breakdowns etc.
Wellington maritime radio 04 914 8333 (Cancelling TR's if out of VHF coverage)
Beacon Hill 04 388 5470 (Notifying entry and exit at night or in low visibility only if unable to by VHF)