

**INDEX OF PLATES,
FIGURES AND TABLES**

List of Plates

1	Hutt River near Molesworth's farm, 1847	2
2	Ancient forest remnants	15
3	Wellington Meat Export Bores	15
4	Port Nicholson from the Hills above Petone, 1847	17
5	Hutt River near the mouth 1843, sketched by W Swainson FRS	18
6	Hutt River near Central Hutt City, c. 1840	18
7	"Warepori, or Dark House"	20
8	Honiana Te Puni	20
9	Looking across the Hutt River to All Saints Church, Taita, 1894	22
10	The Hutt Valley 1840-1940	23
11	Petone before the Boom. View from the Mill at what is now Percy's Reserve	26
12	Petone c. 1843, S C Brees. Bridge across Moreing's Creek (now culverted), Alicetown	27
13	Alicetown in the 1880s	28
14	Lower Hutt in the 1880s	28
15	Timber groynes erected after the 1858 flood	30
16	Petone in the 1880s, viewed from the Wainuiomata Hill Road	33
17	Stokes Valley Stream confluence, early 1850s	36
18	Taita Gorge, c. 1845	36
19	Looking south from Taita Gorge in the 1880s showing the relative levels of the riverbed and flood plain	37
20	Taita Gorge c. 1880s. Silverstream Rail Bridge in distance. The view shows river works constructed by the first Hutt River Board for Hutt County	37
21	Looking south from the "Fern Ground" (Maoribank), 1876	38
22	View north from the "Fern Ground" (Maoribank), 1876	38
23	Floating Boom Groyne, Lower Hutt, c. 1870s	42
24	Fourth Hutt Bridge c. 1880s showing timber groynes	42
25	High Street, Lower Hutt, 1904	44
26	1898 Flood, Lower Hutt	45
27	Construction of the first stopbanks - compaction	50
28	Construction of the first stopbanks - the borrow pit	50
29	Lower Hutt c. 1907	51
30	Lower Hutt c. 1920	51
31	Gear Island Proposals 1913	56
32	1913 Flood viewed from Melling Suspension Bridge. Note the freeboard to the train in the background	60
33	The Melling Suspension Bridge	61
34	1910 photo of Lower Hutt illustrates the HRB concern for stopbank failure at Melling	62
35	Fifth Hutt Bridge, probably depicting the 1915 Flood	63
36	Extraction at the Estuary, 1929	66
37	Shingle filling of the First Reclamation, c. 1934	66
38	Extraction for Ava Rail Bridge (by dragline), c. 1925	68
39	Bognuda, Adams and Blyth crusher erected upstream of Ewen Bridge 1930, photo 1958	68
40	The Taita deposits before wholesale extraction of the 1950 to 1965 period, August 1947	70
41	Dragline dredge, 1948, probably Avalon area, Bognuda and Adams	70
42	Kingdon's Beach 1955	73
43	Melling Beaches, 1955	73
44	Belmont Beaches 1949	75
45	Belmont Beaches 1955	75
46	Wellington Concret. Pipe Plant, Haywards 1955. Mosaic by Air Contracts Ltd.	77
47	Silverstream Beach, 1955	77

	Page	
48	Atkines and Irvine/Bognuda Plant ca. 1934	81
49	McAllum's Wharf (near Ava Br.) and Coutt's	81
50	MacArthur Bros Plant, River Mouth 1926	82
51	The first reclamation c. 1934 showing the Ava Rail Bridge and the (Jackson Street) Pipe Bridge	84
52	Lower Hutt c. 1934	84
53	Hubert Sladden	87
54	Avalon Area 1949	88
55	Avalon Area 1955	88
56	Fourth Hutt Bridge	92
57	Second Pipe Bridge 1924	92
58	Gear Island c. 1930	93
59	Protection of Eastern Hutt Road c. 1945	93
60	Manor Park Bridge (Ford Road/Georges Bridge), 1931	94
61	1931 flood at Silverstream	95
62	1939 Flood at Maoribank	96
63	1939 Flood at Silverstream	96
64	Avalon 1952	106
65	Taita Estate c. 1945	107
66	Barton's Bush Diversion 1949	112
67	Bluff at Trentham, prior to 1900	113
68	Silverstream c. 1950 looking south through the Taita Gorge	113
69	Moonshine 1931	114
70	Moonshine 1939	114
71	1953 Upper Valley Scheme proposed by Trentham Residency, PWD (plan T1725)	117
72	1953 Upper Valley Scheme proposed by Trentham Residency, PWD (plan T1725)	118
73	Lower Car Park, Hutt City, 1971	121
74	December 1976 Flooding from the Korokoro Stream	124
75	Failure Silverstream Cut, c. 1984	124
76	Parkdale Stopbank and Protection Works 1985	126
77	Reconstruction of the Okoutu Stream Auxiliary Stopbank	127
78	Croft Grove 1988. 1903 stopbank overlaid by 1956 reconstruction. Face slumping into river	128
79	Erosion at the Pomare Railway Bridge, 1988	130
80	Erosion at McLeod Street c. 1985	130
81	Silverstream Cut 1st Stage, 1960. View looking northwards to Barton's Bush	132
82	Moonshine Bed Levels, 1931	133
83	Maoribank c. 1920	134
84	Maoribank c. 1920	134
85	Debris fences along the eastern bank of the Hutt River at Trentham, 1986 (note the "Bluff" in the background refer plate 67)	137
86	Willow plantations planted in 1986, western river bank opposite Moonshine Park	138
87	Bypass at Maoribank, 1987	138
88	Newly Established Alignment, downstream Moonshine Bridge, 1986	140
89	Water pollution caused by suspended silt from extraction company waste, 1967	143
90	1956 photo showing the extent of the original stopbanking	172
91	1956 stopbank works in progress	174
92	1955 Flood showing the restriction formed by the Melling bend	176
93	Closing the channel to direct water through the first stage, Nov 1969	190
94	Aerial view of the combined first and second stages of the Silverstream Cut	192
95	The sewer crossing looking west to east 1989	205
96	Construction of the sewer crossing 1976. Note the bed depth above the structure	205
97	Hutt River bed south of the Mangaroa confluence at the start of highway construction. The river flowed against the highway before the diversion	207
98	Stokes Valley Stream dividing stopbank 1982	209

	Page	
99	Erosion of the Parkdale river reserve 1983	215
100	Stopbank and stabilisation works on completion 1984	215
101	Cycle track at Fraser Park	217
102	Pomare bank erosion. The eastern stopbank at the head of the Taita housing estate can be seen in the background	224
103	Reinstatement of the eastern bank, Ewen Bridge 1985	228
104	Ewen Bridge left bank stabilisation 1986	228
105	Harcourt Park toe stabilisation 1985	230
106	Harcourt Park toe stabilisation 1989	230
107	Croft Grove excavation of unsuitable stopbank toe 1988	232
108	Croft Grove reconstruction of stopbank 1988	232
109	Upper Hutt Bypass River Works - establishment of meander pattern	235
110	Upper Hutt Bypass - Maoribank deflector and river wall 1989	235
111	Melling Stopbank. Exposure of the stopbank core following the removal of one willow stump	238
112	Melling Stopbank. Reconstruction of the bank after the removal of the tree stumps	238

List of Figures

1	Major faultlines in the Wellington area	10
2	Fault movement, 1855 earthquake	10
3	Petone foreshore and Hutt River estuary in recent time	12
4	River courses across the Western Hills	14
5	Climatic Changes	14
6	Hutt Valley Artesian System	16
7	Land ownership in 1845	29
8	1871 and 1900 River alignments between Melling and Estuary Bridge.	32
9	The 1858 "Great Flood"	34
10	1894 Petone Stopbank	43
11	Hutt River District Boundaries	52
12	Log of Extraction Activity, Estuary to Belmont, 1900-1955	80
13	River Zone Information in the Ewen Bridge Area	144
14	1955 Flood as recorded at the Ewen Bridge, Lower Hutt	148
15	1955 Flood hydrograph for Maoribank	148
16	Synthetic Flood Series at Ewen Bridge 1840-1990	152
17	Computed Stage/Discharge curves for 1890	153
18	Computed Rating Curves for Ewen Bridge	153
19	HRB rating for Ewen Bridge c. 1950	154
20	PWD rating Maoribank 1953	154
21	HRB 1951 Flood Frequency Relationship	156
22	1990 HRFCS Flood Frequency Relationship	158
23	1976 WRWB Flood Frequency Relationship	159

List of Archive Tables

1	Chronology of Events	4
2	Abbreviations used within the Archive Tables	7
3	Historical Floods 1840-1899	31
4	River Works 1840 to 1900.	44
5	Scheme for Conserving the Hutt River 1899-1907	49
6	The Hutt River Board Rating District.	53
7	River Works 1900 to 1924.	59
8	Flood Archives 1900-1924.	62
9	Exploitation of the Shingle Resource, part 1.	74
10	Exploitation of the Shingle Resource, part 2.	76
11	Exploitation of the Shingle Resource, part 3.	78

	Page
12 Annual Volumes of Shingle Extraction; 1900 to 1990.	79
13 Historical River Alignments	90
14 River Management from 1924	99-103
15 Lower Valley Scheme Review 1945 to 1975	109
16 1950 Scheme Review, Design Discharge	111
17 Promotion of the Upper Valley Scheme	116
18 Flood Observations from 1924	160-162

List of Tables

I River Works Expenditure 1907-1990	57
II River Works Expenditure 1907-1990 (contd)	58
III Historical Floods 1840-1930	150
IV Hutt River Synthetic Flood Series 1840-1990	151
V Catchment Hydrological Monitoring	155

*Bank reconstruction, Ewen Bridge, 1984
(WRC photo)*

*Stopbank construction 1902
(ATL neg F28347)*

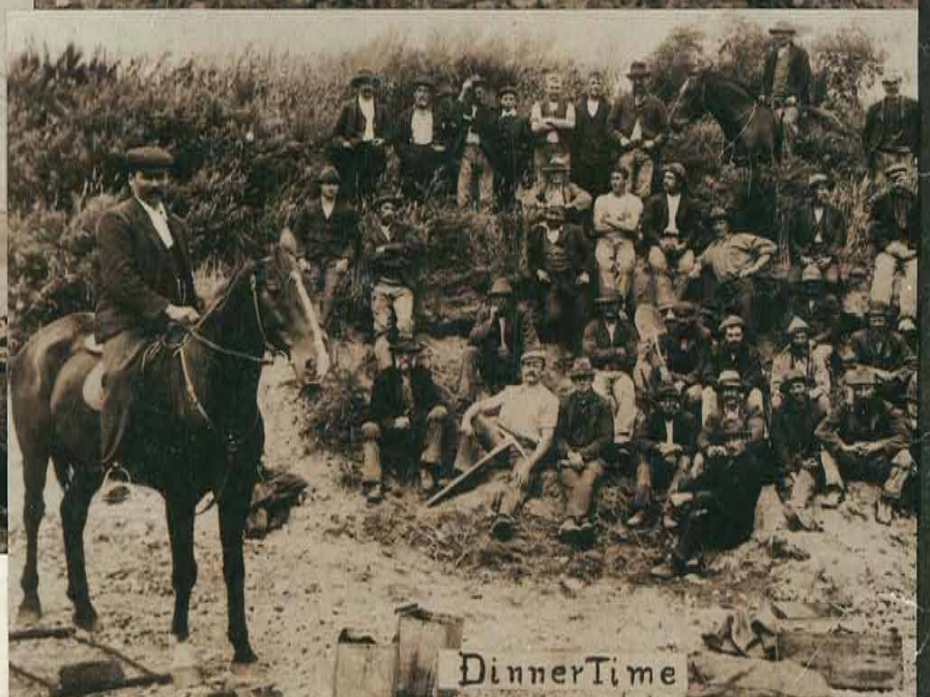
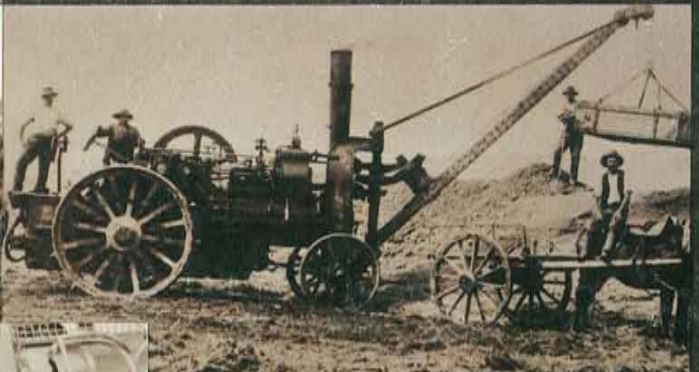
*Willow planting, UH Bypass, 1986
(WRC photo)*

*E.M. Sladden supervising
stopbank raising
Strand Park, c.1956
HRB photo.*

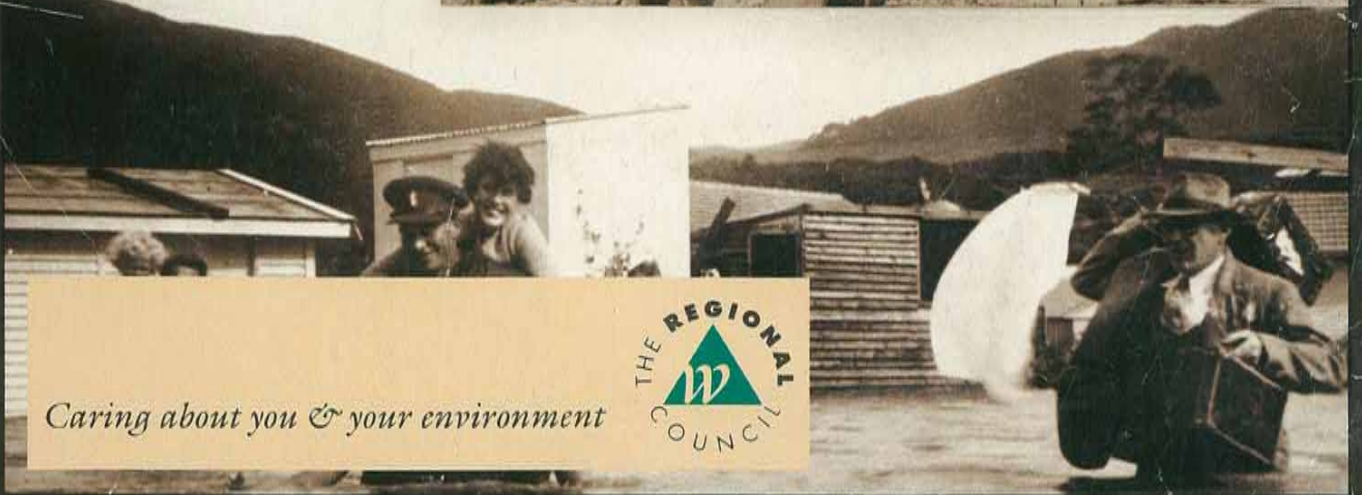
*Stopbank constructors 1902
(ATL neg F28354)*

*Feb 1955 Flood
(Evening Post neg 294-55)*

Photographs included in the back cover mosaic.



DinnerTime



Caring about you & your environment

