

## 8 Wellington Harbour and Hutt Valley Whaitua

**Minimum flows, minimum water levels and core allocation** referred to in the Plan are interim to the extent that they will be reviewed by **whaitua** committees and may be amended by plan changes or variations following recommendations of **whaitua** committees.

### 8.1 Policies

In addition to policies on **minimum flows, minimum water levels and core allocation** that follow, policies in chapter 4 of the Plan also apply equally to **minimum flows and core allocation** in the Wellington Harbour and Hutt Valley Whaitua.

#### Policy WH.P1: Minimum flows and minimum water levels in the Wellington Harbour and Hutt Valley Whaitua

**Minimum flows and minimum water levels** in the Wellington Harbour and Hutt Valley Whaitua are:

- (a) for rivers (including **tributaries**) the **minimum flows** in Table 8.1, and
- (b) for rivers not in Table 8.1, 90% of the **mean annual low flow**, and
- (c) for **natural lakes**, existing **minimum water levels**.

#### Policy WH.P2: Core allocation in the Wellington Harbour and Hutt Valley Whaitua

The maximum amount of water available for allocation from rivers (and **tributaries**) and groundwater in the Te Awa Kairangi/Hutt River, Wainuiomata River catchment and Orongorongo River catchments, at the time an application is made for resource consent to take and use water, shall not exceed whichever is the greater of:

- (a) the total amount allocated by resource consents, or
- (b) the allocation amounts identified in Tables 8.2-8.3

except for the taking and use of water identified in Policy P124 at flows above the **median flow**.

Where the total amount allocated by resource consents exceeds the allocation amounts in Tables 8.2 and 8.3 that does not imply that an existing consented **community drinking water supply** is an over allocation, which will be a matter considered through the **Whaitua Implementation Programme**.

## 8.2 Rules

If an activity is covered by more than one rule, then the rule that applies is the rule that is more specific for the relevant activity, area or resource. This does not apply where a proposal includes a number of activities which trigger separate specific rules. In that case, all rules are considered when assessing the proposal. An activity needs to comply with all relevant rules in the Plan, including those in Chapter 5.

### Rule WH.R1: Take and use of water in the Wellington Harbour and Hutt Valley Whaitua – restricted discretionary activity

The take and use of water from any river (including **tributaries**) and groundwater in the Te Awa Kairangi/Hutt River, Wainuiomata River and Orongorongo River catchments, that is not provided for in Rules R152, R153, R154, R155, R156, R157 or R159 is a restricted discretionary activity provided the following conditions are met:

- (a) the take and use shall not occur below the **minimum flows** in Table 8.1, except that this condition does not apply to:
  - (i) water for the **health needs of people** as part of a **group drinking water supply** or a **community drinking water supply**, and
  - (ii) taking groundwater, and
- (b) in any **catchment management unit** in Tables 8.2 and 8.3, the amount of water taken and used, in addition to all **existing resource consents**, does not exceed whichever is the greater of:
  - (i) the maximum amount allocated by resource consents at the date the consent application is lodged, or
  - (ii) the allocation amounts in Tables 8.2 and 8.3except that this condition does not apply to the take and use of water at river flows above the **median flow**, and
- (c) at flows above **median flow**:
  - (i) the frequency of **flushing flows** that exceed three times the **median flow** of the river is not changed, and
  - ~~(ii) no more than 50% of the river flow above the median flow is taken for rivers with mean flows greater than 5m<sup>3</sup>/sec, or~~
  - (ii) for rivers (and their **tributaries**) listed in Table 1 of Schedule U no more than 50% of the portion of flow in the river above the **median flow** is taken at the point of abstraction, or

- ~~(iii) no more than 10% of the total river flow is taken for rivers with mean flows of less than or equal to 5m<sup>3</sup>/sec.~~
- (iii) for rivers (and their **tributaries**) listed in Table 2 of Schedule U no more than 10% of the total amount of flow in the river is taken at the point of abstraction, or
- (iv) for rivers (and their **tributaries**) not listed in either Table 1 or 2 of Schedule U no more than 10% of the total amount of flow in the river at the point of abstraction, and
- (d) the take and use is not from a river identified as outstanding in Schedule A1 (outstanding rivers).

*Matters for discretion*

1. The reasonable and efficient use of water, including the criteria in Schedule P (efficient use)
2. The timing, amount, and rate of take of water; including instantaneous (L/sec), daily (m<sup>3</sup>/day), and seasonal requirements and duration and timing of peak daily take rate
3. For **group drinking water supplies** or **community drinking water supplies**, the amount and rate of water taken and used for the **health needs of people**
4. Reduction in the rate of take from surface water and **Category A groundwater** and **Category B groundwater** at times of low flow and restrictions when rivers approach or fall below the **minimum flows or water level**
5. Effects due to local flow or water level depletion on wetlands, springs, or the downstream river reach in the same **catchment management unit**
6. Interference effects on existing lawful water takes
7. Prevention of salt water intrusion into the **aquifer**, or landward movement of the salt water/fresh water interface
8. For a take and use from groundwater, the degree of connectivity and category according to Table 4.1
9. Preventing fish from entering water intakes
10. Measuring and reporting, including the guideline in Schedule R (measuring takes)

### Rule WH.R2: Take and use of water in the Wellington Harbour and Hutt Valley Whaitua – discretionary activity

The take and use of water that is not provided for in Rules R152, R153, R154, R155, R156, R157 or R159 in the Wellington Harbour and Hutt Valley Whaitua ~~from~~:

- (a) from any river or groundwater not in Table 8.2 and Table 8.3, and
- (b) from any lake other than an outstanding lake identified in Schedule A2 (outstanding lakes), and
- (c) from any river at flows above the **median flow** that does not meet condition (c) of Rule WH.R1, and
- (d) where not provided for in WH.R1, from Te Awa Kairangi/Hutt River (including tributaries) below minimum flows in Table 8.1 down to 400L/s at the Kaitoke water supply intake for:
  - (i) maintenance of the community drinking water supply between October and March, in the event that one or more of the storage lakes at Te Marua is not operating due to necessary maintenance work, or
  - (ii) emergency works

is a discretionary activity.

### Rule WH.R3: Take and use of water from outstanding rivers or lakes – non-complying activity

The take and use of water from a river or lake in the Wellington Harbour and Hutt Valley Whaitua identified as outstanding in Schedule A1 (outstanding rivers) or Schedule A2 (outstanding lakes) is a non-complying activity.

### Rule WH.R4: Take and use of water exceeding minimum flows or core allocation – prohibited activity

The take and use of water from a river (including **tributaries**) or groundwater in the Wellington Harbour and Hutt Valley Whaitua in Tables 8.2 and 8.3 that does not meet conditions (a) or (b) of Rule WH.R1 or WH.R2(d) is a prohibited activity.

**Table 8.1: Minimum flows for rivers in the Wellington Harbour and Hutt Valley  
Whaitua**

River		Management point	Minimum flow (L/s)
Te Awa Kairangi/Hutt River	Upstream of the confluence with the Pakuratahi River	Kaitoke water supply intake	600
	Downstream of the confluence with the Pakuratahi River	Birchville recorder	1,200
Wainuiomata River	Between Manuka Track and the confluence with Georges Creek	Manuka recorder	100
	Between Georges Creek and the boundary of the coastal marine area	Leonard Wood Park recorder	300
Orongorongo River upstream of the boundary with the coastal marine area		Truss Bridge recorder	100

**Table 8.2: Surface water allocation amounts for rivers and Category A groundwater and Category B groundwater in the Te Awa Kairangi/Hutt River, Wainuiomata River and Orongorongo River catchments**

Catchment management unit for the Te Awa Kairangi/Hutt River catchment (shown in Figures 8.1 and 8.2)	Allocation amount <sup>1</sup> (L/s)
Te Awa Kairangi/Hutt River and <b>tributaries</b> , Upper Hutt or Lower Hutt <b>Category A groundwater</b> and Upper or Lower Hutt <b>Category B groundwater (stream depletion)</b> in the <b>catchment management units</b> shown in Figures 8.1 and 8.2	2,140
Wainuiomata River and <b>tributaries</b>	180
Orongorongo River and <b>tributaries</b>	95

*Note*

Where **Category B groundwater** is referred to in table 8.2, the calculated stream depleting effect (described in Table 4.1) is included in the **surface water allocation** for the relevant **catchment management unit**, while the remainder is included in the **groundwater allocation** for the relevant **catchment management unit**.

<sup>1</sup> This limit has been derived as a default based upon one of two rules; for rivers with a mean flow of greater than 5,000 litres/sec, the allocation amount is equal to 50% of the **mean annual low flow (7d MALF)** and for rivers with a mean flow of less than 5,000 litres/sec, the allocation limit is equal to 30% of the 7d **MALF**.

**Table 8.3: Groundwater allocation amounts for Category B groundwater and Category C groundwater in the Wellington Harbour and Hutt Valley Whaitua**

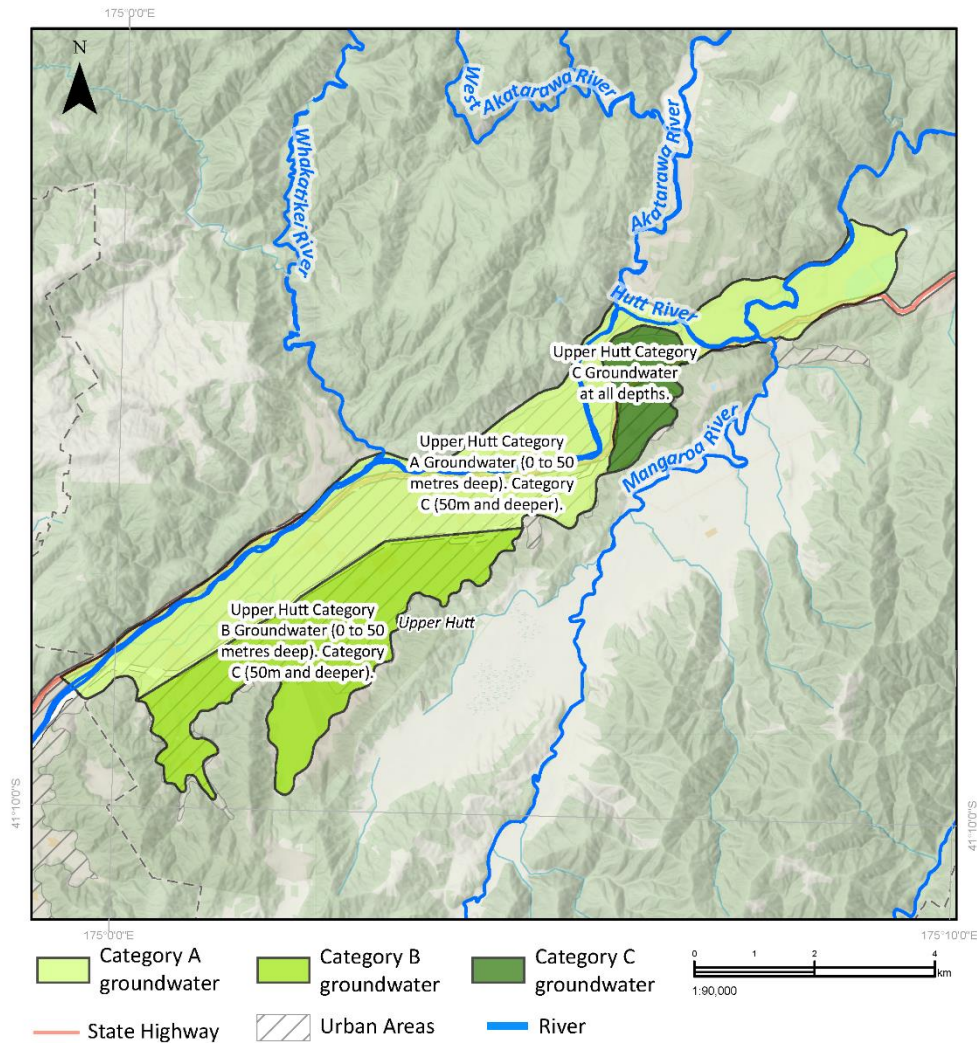
Catchment management units for the Te Awa Kairangi/Hutt River catchment (shown in Figures 8.1 and 8.2)	Allocation amount (m <sup>3</sup> /year)
Upper Hutt <b>Category B groundwater</b> and Upper Hutt <b>Category C groundwater</b>	770,000
Lower Hutt <b>Category B groundwater</b>	36,500,000 [Waiwhetu Aquifer and Taita Alluvium] <sup>2</sup>

*Note*

Groundwater and surface water connectivity is managed by Policy P108. Allocation of groundwater amounts specified in Table 8.3 may be constrained by corresponding **surface water allocation** amounts in connected **catchment management units**. For Category B groundwater Where category B groundwater is referred to in Table 8.3, the calculated stream ~~depleting~~ depletion effect (described in Table 4.1) is included in the **surface water allocation** in Table 8.2 for the relevant **catchment management unit**, while the remainder is included in the **groundwater allocation** in Table 8.3 for the relevant **catchment management unit**.

<sup>2</sup> This allocation volume includes depletion equating to 600 L/sec from the Te Awa Kairangi/Hutt River.

**Figure 8.1: Te Awa Kairangi/Hutt River and Upper Hutt groundwater in Tables 8.2 and 8.3**

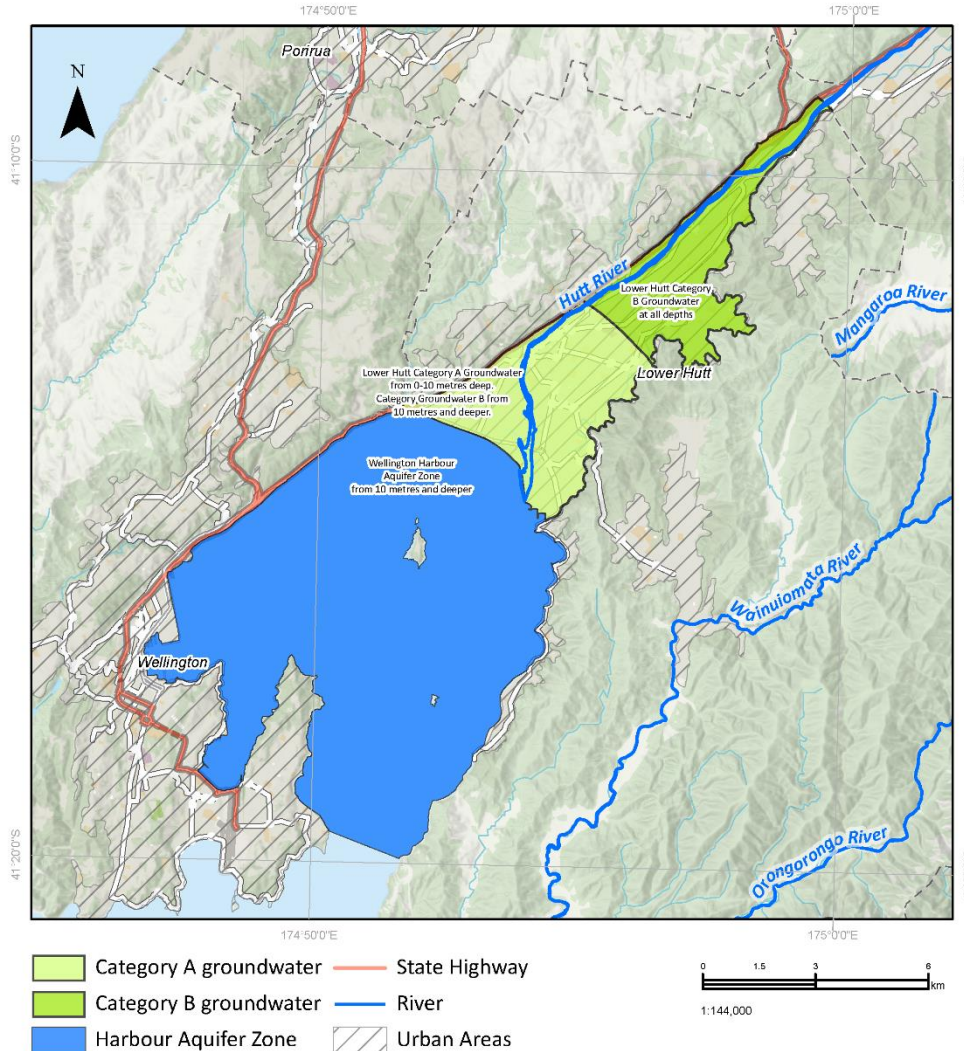


This version of the map is not complete. The version of this map available online through the online web map viewer shows the complete, detailed information on a GIS overlay that is not shown on this hard copy. The online version is available on the Council's website at <https://mapping.gw.govt.nz/gwrc/> (select theme Natural Resources Plan) and can be accessed from the Council offices or public library.

Copyright  
 Basemap: Eagle Technology, GWRC & LINZ  
 Topographic & Cadastral: LINZ, CoreLogic  
 Projection: NZTM 2000



**Figure 8.2: Te Awa Kairangi/Hutt River and Lower Hutt groundwater in Tables 8.2 and 8.3**



This version of the map is not complete. The version of this map available online through the online web map viewer shows the complete, detailed information on a GIS overlay that is not shown on this hard copy. The online version is available on the Council's website at <https://mapping.gw.govt.nz/gwrc/> (select theme Natural Resources Plan) and can be accessed from the Council offices or public library.

Copyright  
 Basemap: Eagle Technology, GWRC & LINZ  
 Topographic & Cadastral: LINZ, CoreLogic  
 Projection: NZTM 2000

